



INNOCENT SECRETS LENORMAND

A card deck by
Patrick Scheller

TABLE OF CONTENTS

- 03** **The Innocent Secrets Lenormand**
A brief introduction to the Innocent Secrets Oracle
- 04** **Using Lenormand cards**
A brief introduction to the interpretation of Lenormand cards
- 06** **The meanings of the Lenormand symbols**
An introduction to the basic meanings of Lenormand symbols
- 44** **Imprint**
Legal information

DAS INNOCENT SECRETS LENORMAND

Lenormand cards have a long history and are among the best-known fortune-telling cards in Europe. Since the 19th century they have proven to give insight into the past, future and present. For some years now, they have been gaining more and more followers worldwide and a great variety of differently designed card decks has emerged, which can fulfill almost all wishes and preferences.

The Innocent Secrets Lenormand is characterized by its soft and gentle coloring, created with the delicate and flowing nature of watercolors. The clear graphic illustrations of the symbols are simple yet expressive, giving the deck a unique visual appeal.

The colors and shapes on the cards communicate in an unobtrusive way. They tell their stories quietly yet forcefully, inviting the viewer to embark on a journey of discovery and reflection.

The lighthearted energy of this deck and the clarity in the depiction of the symbols allows the viewer to focus on the essential elements of each card. It is a deck that is therefore particularly well suited for beginners. It celebrates the beauty of simplicity and encourages you to discover the untouched secrets hidden within us all.

I hope that the Innocent Secrets Lenormand card deck will support you in your spiritual journey and inspire you to dive deep into your subconscious.

I wish you much joy and enlightening insights while reading this card oracle.

Your Patrick Scheller

USING LENORMAND CARDS

Every Lenormand deck consists of 36 cards, each of which has a specific symbol and a fixed number. The symbols in Lenormand are characterized above all by the fact that they do not contain mystical and hidden secret signs, as is the case in the Tarot. They show simple images that are absolutely familiar to you from your surroundings, that you encounter regularly in your life and whose meaning you can often grasp intuitively, even without having learned them before. It is precisely this circumstance that makes Lenormand as a divination system so accessible and easy to learn.

Each card in the Lenormand deck can be understood as a placeholder for different terms and concepts. The Clover for example means luck, the Coffin represents mourning or the Dog stands for friendship. Every person will immediately and intuitively understand these symbolic connections. The specific meaning that a symbol has in any context, usually has evolved and grown over centuries. In some cases, it's a statement that can be agreed upon by everyone in the world. Other symbols, on the other hand, are culturally determined and can take on very different meanings in different regions.

Ultimately, the meaning always depends on you personally.

The answering of questions

There are many ways to interpret the cards in Lenormand. To explain this in detail is far beyond the scope of this digital booklet. Nevertheless, I would like to briefly describe the basic procedure here.

First of all, you should be completely clear about what exactly you want to know and, above all, why? Only when you have a precise idea of what your question actually is and how to phrase it, will you be in the position to expect a satisfactory answer from the cards. In particular, you should choose the wording openly, i.e. in a way that it cannot be answered by a simple yes or no.

The next step is to shuffle the cards and then lay them out. There are different systems for this, such as the Grand Tableau or the Celtic Cross. As a beginner, however, I would recommend that you start with a simple three-card draw. You draw the cards from the deck and lay them out in a row in front of you. Then you interpret the symbols and answer the question in a complete sentence.

Examples of classic interpretations of a three-card spread

What can I do to find myself again?

Tree, Ship, Sun. Give yourself some time off (Tree) and take a trip (Ship) to a sunny and warm location (Sun).

What feelings connect us?

Cross, Key, Anchor. The belief (Cross) in success (Key) and in perseverance (Anchor) connects you.

How does the conversation with my supervisor go next week?

Scythe, Clover, Garden. It is to be expected that the conversation will not be very pleasant (Scythe and Clover) and that it will concern the public image (Garden), possibly it will be about customer complaints.

How will my relationship develop in the near future?

Ship, Stars, Mountain. Common goals (Ship) will emerge (Stars) in the relationship and dissolve resistance (Mountain).

What can I do to get his attention?

Woman, Dog, Man. Woman and Man are looking in different directions here, which is a confirmation that the Man is indeed not aware of the Woman. Between them lies the Dog as a symbol of friendship and loyalty. The cards say that the Woman should express her loyalty to the Man in order to get his attention.

THE MEANINGS OF THE SYMBOLS

On the following pages I will introduce you to the classic 36 symbols of the Lenormand. You will learn how their meaning is traditionally derived and with which keywords they can be associated, but also what special features this deck of cards has in store.

You can really dive into the world of the Innocent Secrets Lenormand, if you pay attention to the details and colors of the respective card and let the illustration interact with your mind. In this way you will find your very own meaning for each of the 36 cards, which you can then also feel intensely. In this way you will develop the intuition with which you will receive reliable answers to all your questions. Let your own creativity guide you in the interpretation of this card deck.

THE RIDER

01

Good news, movement and departure

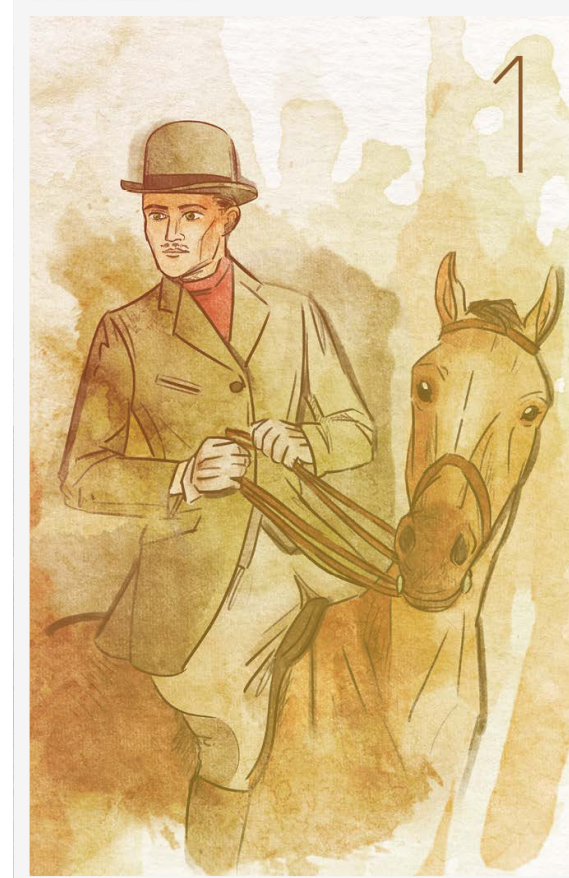
In earlier times, a horse was the fastest means of transportation at one's disposal, and people also liked to use it to deliver important news. The arrival of a mounted messenger was usually good news, because he brought the longed-for information.

The horse and its special characteristics are also an important part of this card. Dynamism, working power and speed of these animals have always been particularly appreciated.

As a working animal, it has allowed man to expand further and faster than he would have been able to do alone. In this sense, it has also established itself as a symbol of expansion and progress.

KEYWORDS

Good news, messenger, positive outcome of a situation, movement, departure, progress, expansion, means of transportation, traffic, trade, speed, quickness, activity, beginning, sport, livestock, car



THE CLOVER

02

Good luck and gambling

In nature, this small and inconspicuous plant is usually found as a three-leaved variant, which is why you need a little luck to hold a four-leaved specimen in your hands. For this reason, people have always seen in the rare shamrock a symbol of luck or a lucky charm.

Regardless of the number of its leaves, clover is a plant with many positive properties. Due to its ability to bind large amounts of nitrogen from the air, it contributes as a natural fertilizer to improve soil fertility. Even in ancient times, farmers noticed that the harvest was much richer when clover had grown in the field and associated it with a lucky twist of fate.

Nevertheless, the clover in Lenormand describes only a small manageable moment of luck or a small gain.

KEYWORDS

Luck, small profit, gamble, chance, risk, serendipity, good fortune, small gain, joy, fun, humor, amusement, grass, fertilizer, feed, raw food, short term, short duration



THE SHIP

03

Dreams and desires

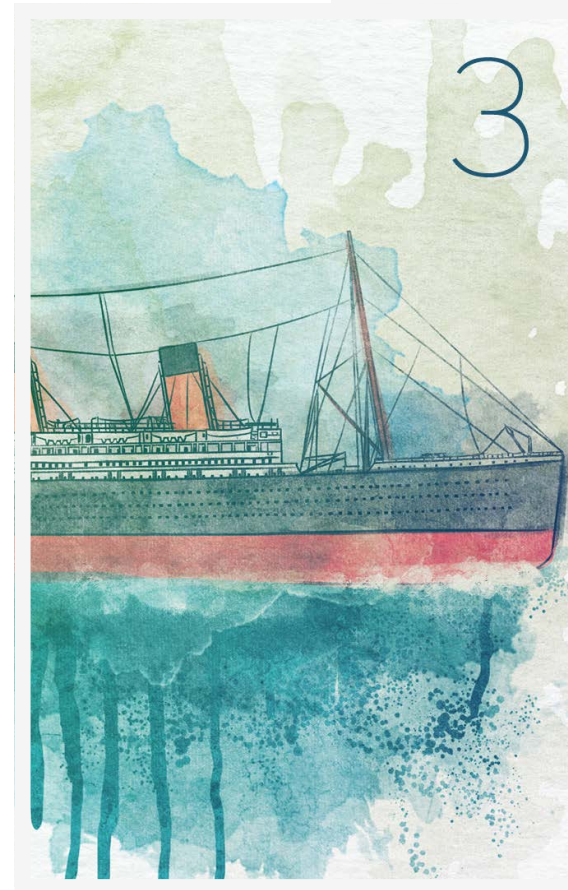
In earlier times, the ship was the best way to travel great distances and explore foreign worlds. Emigrants often used this way over the water to reach distant areas and start a new life.

But the ship was not only a means of transport, it was also a symbol of freedom, an opportunity to realize one's dreams and desires. Such a journey into the unknown was always associated with a good portion of adventure and courage.

Another component of this card is the water. The waves on the sea can be seen as a symbol for the ups and downs of life and in this way give the card an additional facet.

KEYWORDS

Dreams, desires, goals, wishes, freedom, leaving something behind, courage, foreign, far away, abroad, journey, means of travel, water, sea, tides, waves, up and down, sway, spirit of exploration, adventure



THE HOUSE

04

Family and stability

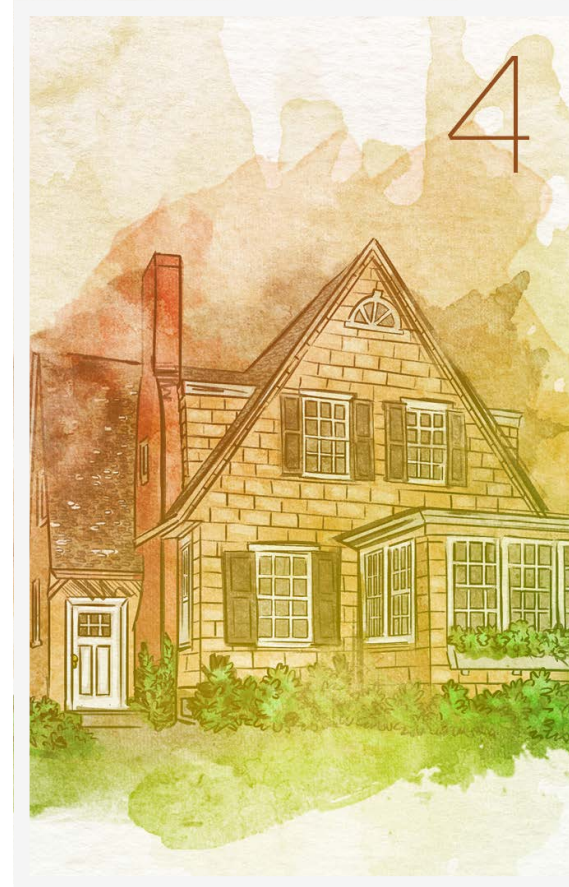
The house is a building that provides shelter for people and in which you can reside. However, it is much more than a place to live, it is also a place of retreat that provides both protection and security. It represents the center of the family's life, a home. Generally the house symbolizes everything that is not public, but private.

The House can also be interpreted as a symbol of stability and permanence, as it provides a solid and permanent shelter that lasts for long periods of time.

This symbol is depicted here as a typical private single-family home, which primarily emphasizes its significance as a haven for the family and a private retreat.

KEYWORDS

Family, solidity, firmness, base, building, living, living situation, place of residence, locality, origin, home, security, habit, privacy, comfort zone, place of retreat, planning for the long term



THE TREE

05

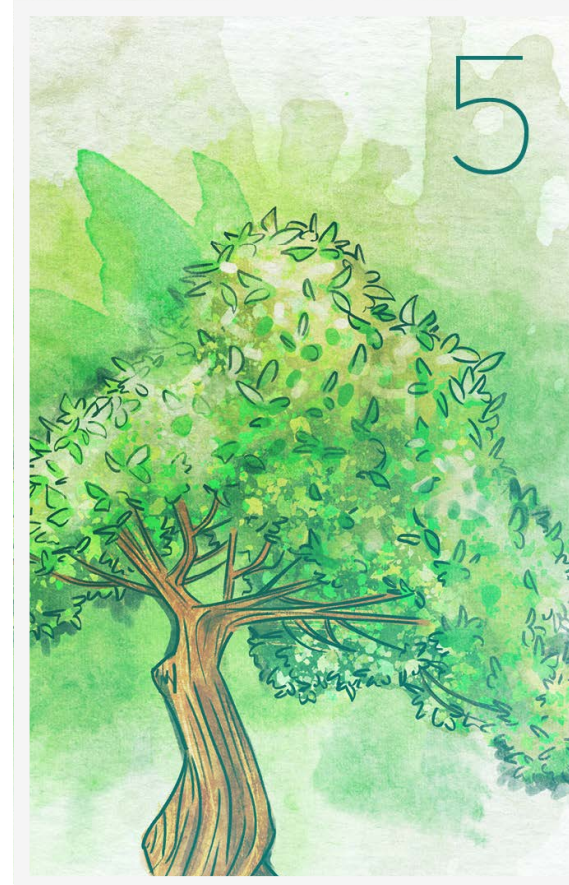
Health and tranquility

The tree is one of the oldest symbols in the history of mankind and is literally deeply rooted in many cultures. Many tree species become ancient in comparison to humans. So it is obvious that the tree is understood as a symbol for health, longevity and generally for life, but also for nature as such.

Through its appearance and the seemingly eternal vigil of the many branching branches and leaves, the tree also embodies concepts such as development and growth. At the same time it represents rootedness, rigidity and immobility, firmly fused with the ground on which it stands.

KEYWORDS

Health, calmness, serenity, longevity, life, rootedness, forest, wood, nature, naturalness, pause, rest, monotony, long-term growth, patience, immobility, genealogy, family tree



THE CLOUDS

06

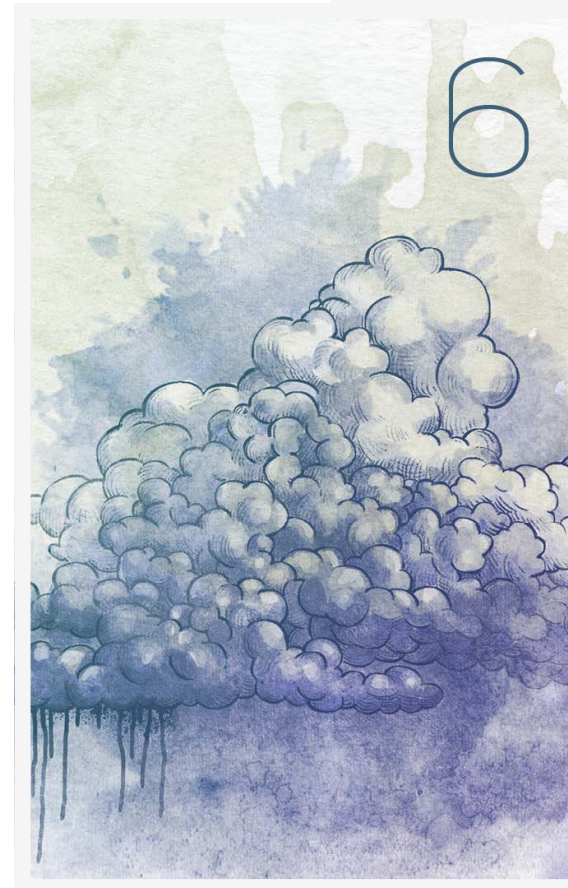
Fear and uncertainty

In the past, people were even more at the mercy of the forces of nature than they are today. Dark clouds appearing on the horizon often meant a serious danger to life and limb. No wonder that clouds are associated with fear and threat. This has also become anchored in idioms when people say that dark clouds are gathering.

The very concrete physical properties of clouds and the circumstances of their appearance also give this card a meaning. Thus they stand for air and wind, but also for fog and associated with it, for obscurity and impenetrability.

KEYWORDS

Fear, ambiguity, uncertainty, non-transparency, opacity, cover-up, obscurity, fog, air, wind, storm, threat, crime, pessimism, autumn



THE SNAKE

07

Complications and detours

The innate aversion of most people to snakes and their extensive demonization within the Christian tradition have probably contributed to the fact that a rather negative image of this symbol has taken root in people's minds. In the seduction of Eve in the Old Testament creation story, it represents sin, and more generally, the snake stands for complications in the broadest sense. Those who can, will gladly accept a larger detour in order not to meet it.

The sinuous shape of her body gives this symbol meaning in the figurative sense of a non-direct connection between two points.

But the snake also embodies positive aspects. Through its ability to shed its skin again and again, it stands for renewal and transformation. The act of rejuvenation, which it carries out with its moults, made it a symbol for the medical profession already in early times.

KEYWORDS

Complications, difficulties, complicated, detours, serpentines, zigzag, tortuous, mother, transformation, temptation, seduction, sin, intelligence, medicine, natural medicine, poison, slipperiness



THE COFFIN

08

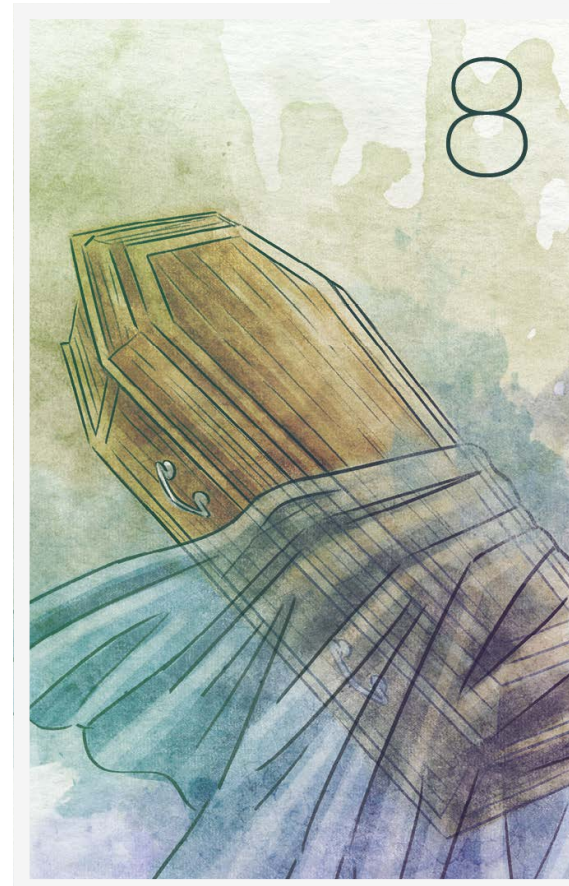
Deep sorrow and finality

As an object, the coffin represents, first of all, a container for the burial of a corpse. But beyond that, the main message of this card is the enormous grief that usually accompanies the coffin. Great sorrow, suffering and unhappiness are the main statements of this card, but so are farewells, mourning and generally the end of things.

But the coffin not only has negative sides, it can also be a symbol of the transition to a new stage of life and indicate a process of maturation or even the release from a depressing condition.

KEYWORDS

Great sorrow, suffering, unhappiness, afterlife, farewell, end, grief, loss, trauma, shadow, transition, maturation, redemption, depression, release, joylessness, paralyzing, eternity, sickness



THE BOUQUET

09

Joy and harmony

Looking at a sea of colorful flowers, you are immediately overcome with a feeling of joy and harmony. The colorful variety of flowers stands for beauty and creativity. In addition, in almost all cultures of the world, flowers are also presented as a sign of appreciation, recognition and gratitude to people one cares about. Whether as a simple gift at a social gathering or as a symbol of special affection for a loved one.

This Lenormand symbol is depicted here as a simple but beautiful bouquet of flowers, held together with a ribbon. The ribbon can be seen as the strength and permanence of the harmony and appreciation expressed by the bouquet. It can also be seen as a symbol of the bond between those for whom the bouquet is intended and those who have given it.

KEYWORDS

Joy, harmony, creativity, art, conviviality, gift, gratitude, contentment, beauty, politeness, courtesy, festivity, gathering, fast growth, fragrance, bouquet, charm, spring



THE SCYTHER

10

Danger and pain

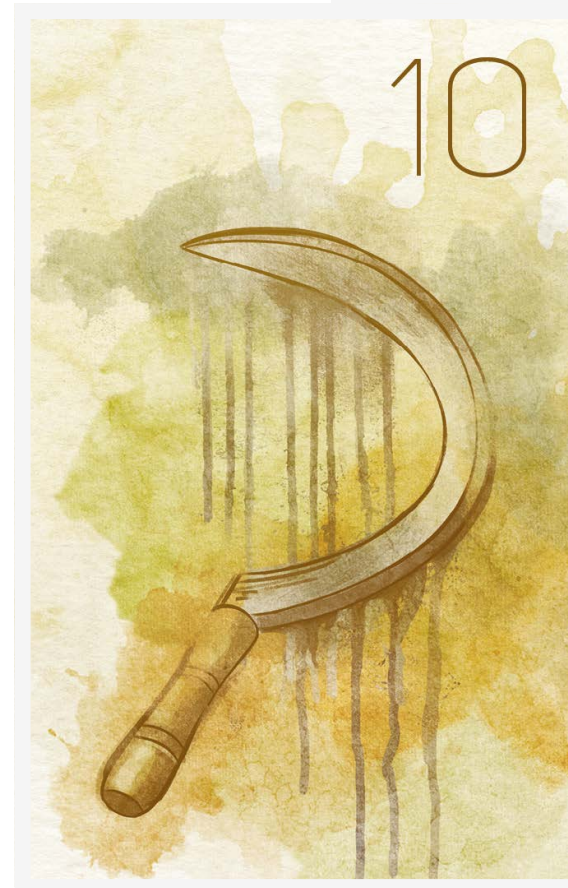
The scythe has a long tradition in agriculture. First and foremost, it is a tool for cutting grass and grain, which makes it a symbol of the harvest.

In the same way, however, it is also a thoroughly dangerous instrument that can cause serious injuries and was used as a weapon in former times. Analogous to its sharp point, the scythe brings something to the point, it often points out things in the layed out card spread that is better not to ignore.

In a figurative sense, the blade of the scythe can also be a symbol for cutting something off, parting with a thing or an idea or even letting a person go.

KEYWORDS

Danger, pain, injury, aggression, shock, suddenness, surprise, intent, weapon, tool, iron, agriculture, harvest, sharp incision, separate, detach, cut off, farming, lightning



THE WHIP

11

Dispute and doubt

The card with the number 11 is also known as the Rods in Lenormand. Some decks show the rods, others the whip and some also depict both together. However, the meaning is largely always the same.

The whip shown here can be used for a wide variety of purposes, but for a long time it was popularly used as a chastising instrument for punishment. In the broadest sense, this card stands for the dispute, i.e. a difference of opinion or argument, which can have a hurtful character and in this way often contains a certain portion of aggression.

In any case, this symbol is about opposing positions that have clashed and are seeking resolution through pain. Every confrontation of this kind is connected with doubts, either about one's own position or that of the other person.

KEYWORDS

Dispute, quarrel, doubt, confrontation, communication, conversations, accident, discord, negotiation, disruption, rupture, conflict, punishment, chastisement, double



THE OWLS

12

Sorrow and stress

The owl is a nocturnal animal that often stays in places that are scary to people. Their piercing gaze and mysterious aura have thus led to the formation of rather negative superstitions around these animals since the Middle Ages. They were often seen as a symbol of approaching death, or more generally as a harbinger of bad luck. To hear the call of an owl alone in the woods at night still makes many people shiver and gives rise to a certain anxious uneasiness.

On the other hand, owls have also been revered since ancient times as a symbol of wisdom and are considered counselors with prophetic abilities. Athena, the Greek goddess of wisdom and namesake of the city of Athens, chose the owl as her companion. She was described by Homer as owl-eyed because she saw things that others could not see, since they took place in the dark.

KEYWORDS

Sorrow, stress, worry, hassle, everyday worries, tribulations, unrest, agitation, commotion, chatter, gossip, nervousness, workshop, advice, wisdom, consulting, prophecy, half, share, seeing, grandparents



THE CHILD

13

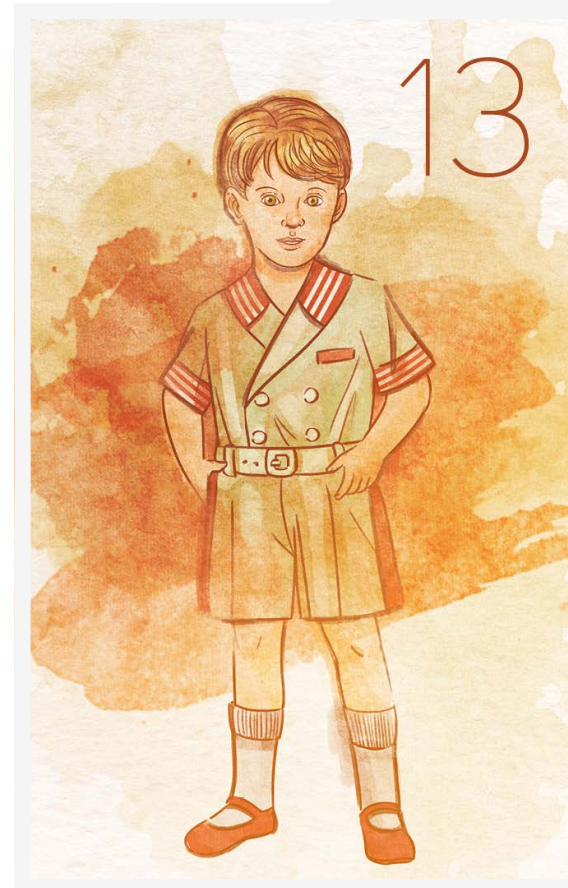
Novelty and new beginning

First of all, the child stands for a person who is in the stage of life between birth and adulthood. It thus symbolizes in a very natural way the life that wants to develop. With great curiosity and impartiality, the little creature enters the world anew in order to explore and experience it.

Inevitably, however, this is also associated with a certain naivety and dependence on parents, i.e. on people who are already more developed and can draw on a greater wealth of experience.

KEYWORDS

New beginning, novelty, child, infancy, unpreparedness, something small, something new, immaturity, curiosity, naivety, innocence, trust, lack of independence



THE FOX

14

Falsity and lies

The fox is an animal that has found its place in legends and fairy tales all over the world. There are numerous similarities and parallels in the global fox myths. For example, it is mostly associated with unflattering terms such as fraud, adultery and theft. The latter is probably based on the propensity of this animal to steal the farmers' livestock.

In the Bible, the fox is also mentioned several times and symbolizes there a false prophet and the epitome of guile. But also the more positive characteristics like shrewdness, camouflage and caution can be associated with the fox. To this day, this double-meaning idea of the fox can be found in the idiom, when someone is called a cunning fox and thus gives expression to a not exclusively positive assessment.

KEYWORDS

Falsity, lie, deception, disguise, hypocrisy, cunning, trickery, shrewdness, deceit, scam, selfishness, self-interest, camouflage, caution, distrust, warning, something goes wrong



THE BEAR

15

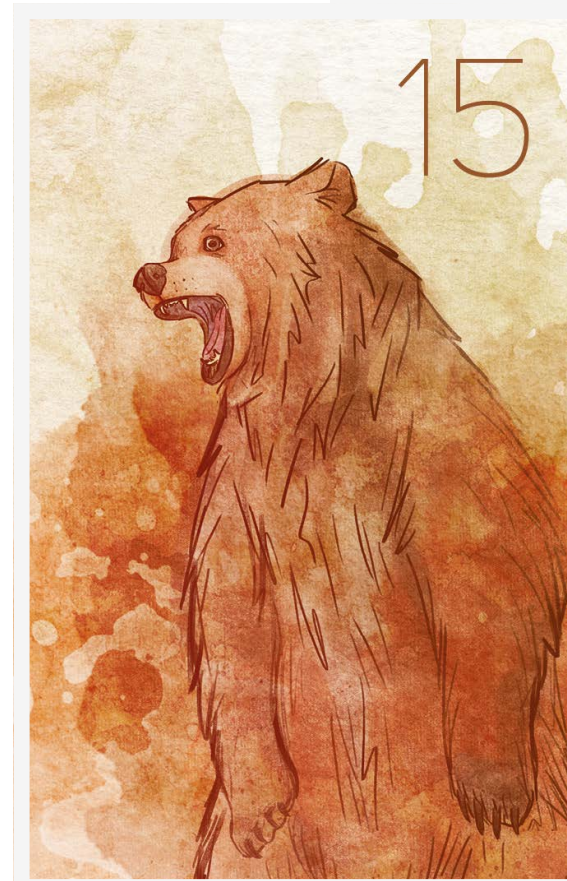
Strength and power

The bear is a powerful and mighty creature in the animal kingdom, which prevails against all adversities in nature with its massive life force. The cultic worship of this impressive animal has a long tradition in the history of mankind. First traces can already be found in cave paintings, which are more than 70,000 years old and which allow a conclusion to be drawn about the special position the bear occupies from man's point of view.

The physical characteristics of size, strength and assertiveness, combined with its apparent composure, are outstanding features of this animal and have made him a symbol of self-confident authority and sovereignty.

KEYWORDS

Strength, power, respect, authority, magnitude, greatness, order, straightforwardness, support, stability, self-confidence, sovereignty, competence, perseverance, assertiveness, dominance, father



THE STARS

16

Clarity and spirituality

The infinite vastness of the universe and the multitude of its stars, planets and galaxies give this symbol its framework. However, the stars can only actually be seen at night and under a clear, cloudless sky.

The observation of the celestial bodies has fascinated people from the earliest times and filled them with great awe. The sight of the stars and the observation of their movement on regular paths, gives the feeling of being part of a great order.

In the common phrase “reaching for the stars” you can see the way in which this symbol has become embedded in people’s minds. For people, they symbolize the pursuit of goals, values and ideals.

KEYWORDS

Clarity, spirituality, sensitivity, abundance, fullness, genuine, perfection, much, potential, confidence, values, ideals, sky, astronomy, night, constellation, esotericism, astrology



THE STORKS

17

Change and modification

The annual return of the storks in spring heralds the end of the cold winter and the profound changes in nature associated with this change of season.

Traditionally, the stork is a fertility symbol and a lucky charm. This view has been shaped not least by fairy tales and legends. However, it is a fact that monogamous storks look after their offspring very intensively and that the young birds in return also look after, feed and protect the old or sick parents. Perhaps this special behavior has also led to the stork being seen as the bearer of the children.

But also the fact that storks cover great distances in flight with impressive ease, profoundly changing their location and living conditions, give this card a meaning.

KEYWORDS

Change, modification, variation, upheaval, transformation, mobility, fertility, airplane, flying, something comes easily, float, move forward quickly, balance, lightness



THE DOG

18

Loyalty and friendship

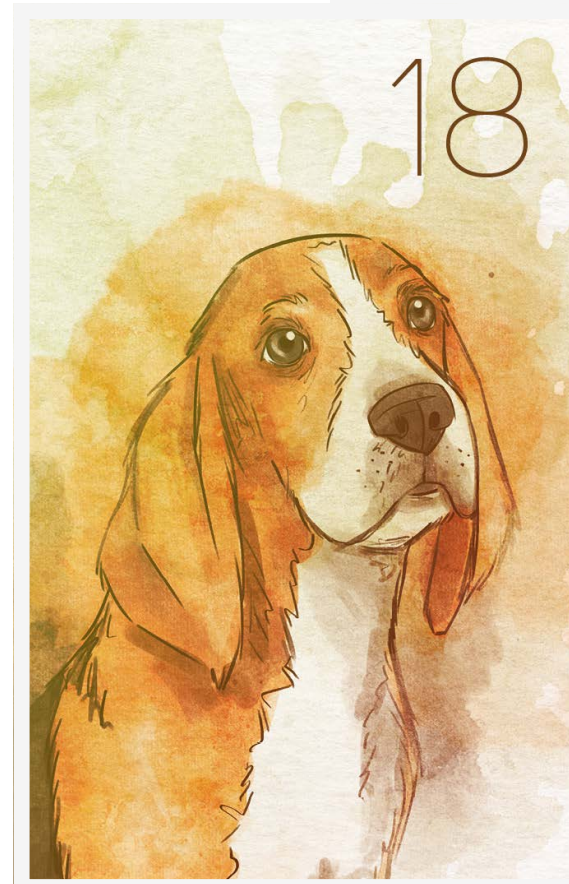
Already about 12,000 years ago the dog was domesticated by man and since that time he is an epitome of the faithful friend. He accompanies man in all situations and is faithfully devoted to him, even in death.

In Lenormand this card symbolizes first of all exactly those qualities of the dog that we value so much: Loyalty and friendship.

The dog is also a pack animal that is used to living in a fixed hierarchy and, if necessary, to subordinate itself. He has a strong sense of territory and is ready to defend his home and the members of his pack at any time.

KEYWORDS

Loyalty, friendship, commitment, sincerity, reliability, alertness, vigilance, helpfulness, comradeship, honesty, virtue, attachment, sticking with something, hierarchy, subordination, follow



THE TOWER

19

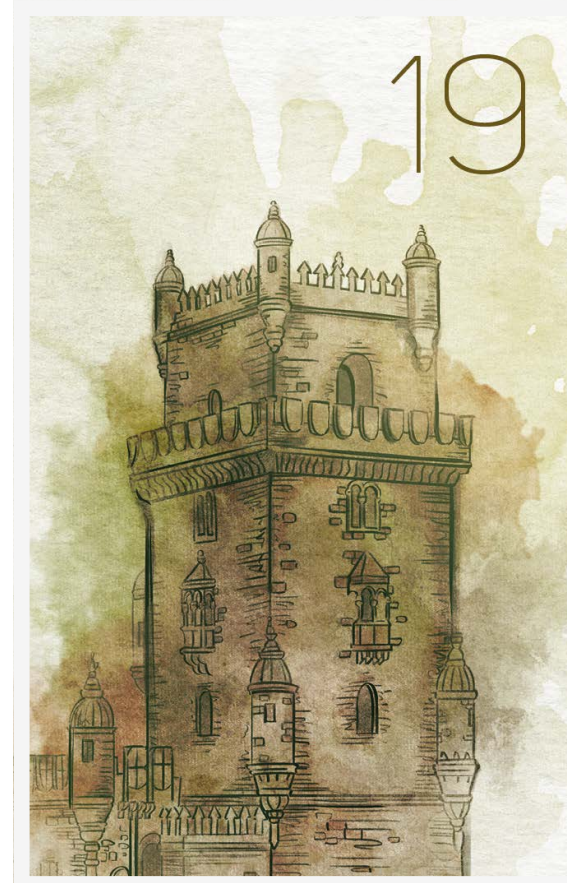
Isolation and separation

The tower is a structure that defines itself primarily by its height and that excels its surroundings by far. With its thick stone walls, it can be a place of retreat that separates, delimits and protects the inhabitants from outside influences. But it can also be a prison that prevents the inhabitants from connecting with the outside world. In any case, the separating and delimiting is an important factor in understanding this card.

In addition, the tower has always been a status symbol that represents the human urge to reach new heights. Whether you look at ancient castle towers or modern office skyscrapers, it is always about the representation of power and the human urge to push above its own limitations.

KEYWORDS

Separation, isolation, complete loss, reserved, distinction, delimitation, demarcation, wall, border, protection, entrepreneurship, company, teaching, university, high building, masonry, protection, rise, status symbol



THE PARK

20

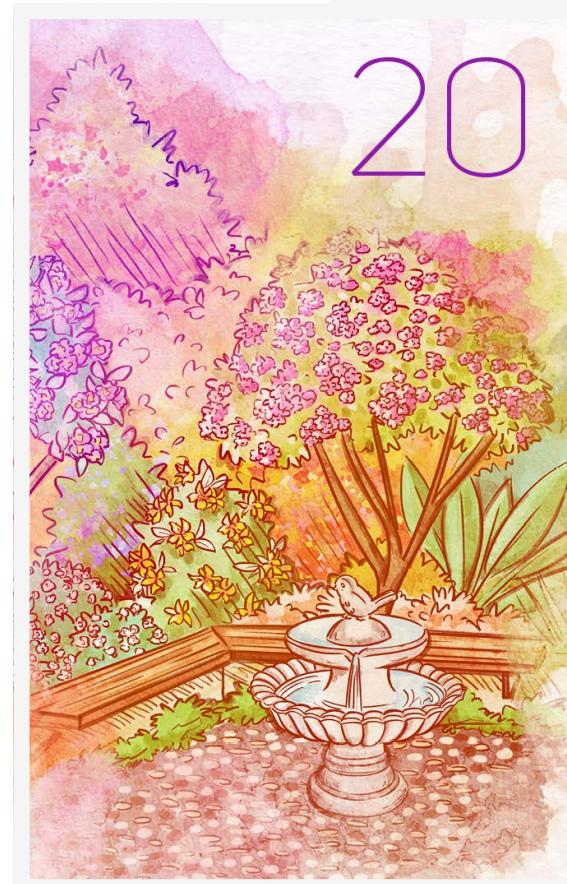
Public and facade

The park is first of all a place where people can come together and interact with each other. Even if it is a clearly demarcated place, it is still a publicly accessible place and this aspect is also the most important element in the interpretation of this card. It is about the social environment, but not necessarily about people who are close to you, but more generally about the publicly visible life.

In addition, the park is also a place of leisure, relaxation and recreation. Despite all openness, however, it is not a place where one turns one's innermost self inside out and reveals oneself to everyone. In a certain way, only the facade is shown, a mask is put on and you only present yourself in public as you would like to be seen by others.

KEYWORDS

Public, publicity, facade, externalities, institution, authority, association, party, public space, internet, celebrity, acquaintances, fame, leisure, openness, social life, obvious, audience



THE MOUNTAIN

21

Obstacles and blockades

The mountain is an imposing elevation in the landscape, that knows how to impress the observer with its immense size and its seeming insurmountability.

Soberly, however, the mountain is simply an obstacle in the way that needs to be overcome. It takes a great deal of effort to overcome an obstacle or to remove a blockage. In the sense of this card, overcoming the mountain takes time. The mountain is always a challenge.

If you look at the natural composition of a mountain, it consists of rock layers and in this sense the symbol in Lenormand can also be interpreted as rocks of different kinds or as minerals.

KEYWORDS

Obstacle, blockade, blockage, challenge, burden, resistance, difficult, problem, delay, reaching one's limits, hardness, stone, minerals, summit, mountains, winter



THE WAYS

22

Decisions and options

Paths or also roads are first of all connections between different places. They make it possible to easily get from one point to another, or to explore an unknown area.

Different paths are usually connected in a network and cross each other. When you reach a crossroads, you are confronted with several options, each of which will lead to a different result or goal. In this way, crossing paths represent a choice one has to make or alternatives that open up to one.

In this sense, this card is above all a symbol for the decision itself, but also for the moment when an individual is faced with a choice and must decide which path to take. In a way, a crossroads is also a symbol of change, because it always brings a change of direction.

KEYWORDS

Decision, turning point, direction, options, alternatives, decisiveness, causality, continuity, consideration, choice, the way out, direction, street, crossroads, road, orientation, network



THE RATS

23

Partial loss and deficiency

In the classic Lenormand representations for this card number 23 mostly the mice are depicted. Here it is the closely related rats that find their place on this card, but in principle they bring the same interpretations as the mice.

These small rodents have a long and ambivalent history with man. In the sense of Lenormand, these animals are primarily seen from their not so pleasant side in the role of food pests. They often gnaw unnoticed for a long time on anything that can be found, leading to a constant loss of supplies for humans. They are also usually associated with terms such as impurity and disease plagues.

KEYWORDS

Partial loss, deficiency, humility, lack, decrease, taking something away, abandonment, renunciation, reduction, dwindling, nutrition, food, dirt, filth, thrift, disgust, low value, stinginess, theft, lack of self-esteem



THE HEART

24

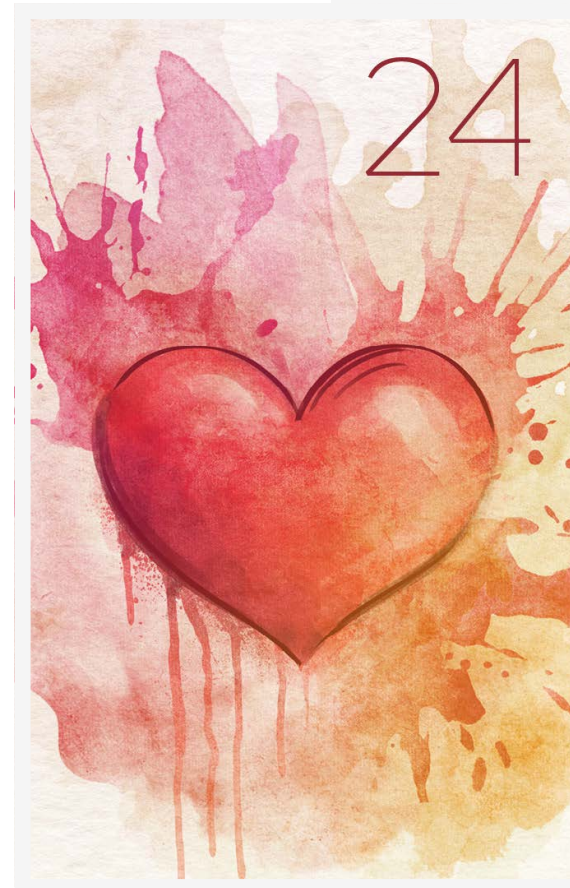
Love and affection

The heart has always been a symbol of love and the seat of intimate feelings. Its typical shape probably originally goes back to the stylized representation of ivy leaves, which in ancient times were seen as a symbol of eternal love.

The significance of the heart as the origin of feelings was already known at that time, and to this day this has also become established in linguistic usage, for example, when we speak of something going to our heart, or of pouring out our heart to someone.

KEYWORDS

Love, intimate feelings, infatuation, kindness of heart, affection, esteem, adoration, sympathy, enthusiasm, rapture, charity, self-love, rhythm, pump, blood, flesh



THE RING

25

Relationships and contracts

Rings are one of the oldest pieces of jewelry in the world. They are worn by women and men alike. But their significance goes far beyond that of a mere object of value.

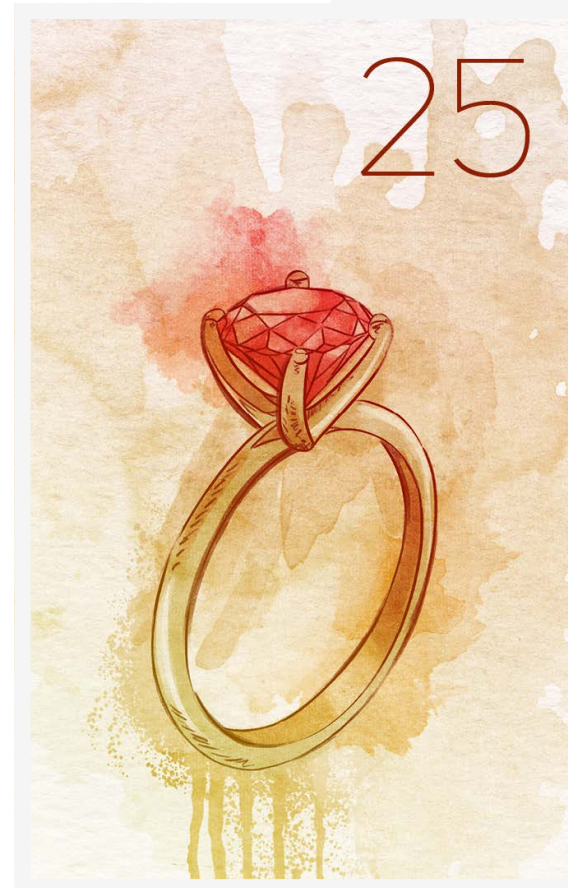
Often they represent a sense of belonging, sometimes they are an expression of power or a creed. But they are always a symbol of attachment to a person, a group, an idea or a cause.

In earlier times, important documents were also concluded with the help of a signet ring, the ring so to speak seals the conclusion of a contract.

Furthermore, the ring is a symbol for a circle, or also for a loop without beginning and end and can thus be used as a symbol for completeness. It can indicate that something is infinitely repeated and unchangeable, that it has no beginning or end.

KEYWORDS

Relationship, contract, marriage, partnership, bond, obligation, covenant, circle, sphere, commitment, oath, vow, promise, repetition, unity, gold, treasure, jewelry, value, pattern



THE BOOK

26

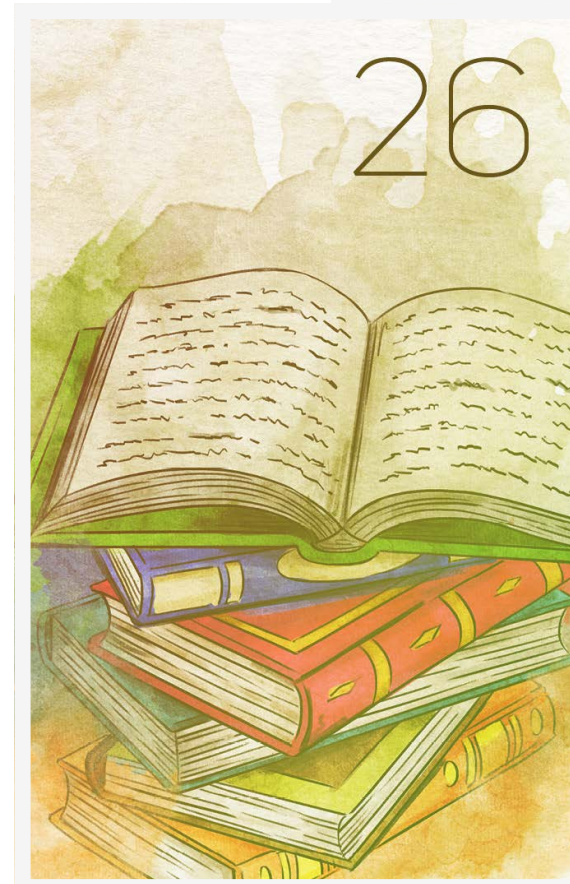
Secrets and knowledge

The book is first and foremost a cultural product or an achievement of human cultural development. For a long time, books have been used to record, preserve and also disseminate knowledge, events or ideas.

In earlier times, however, this knowledge was only accessible to certain initiated and educated circles, because the use of a book in this sense presupposes a competence in writing and also an ability to read. In the past, both were not available to the general public for a long time. Therefore, the book is not only associated with knowledge and teaching, but also with mystery.

KEYWORDS

Secret, unknown, hidden, hiding place, confidential, learned knowledge, library, history, memory, remembrance, insight, expert, culture, education, reading, literature, author, conservation, casket



THE LETTER

27

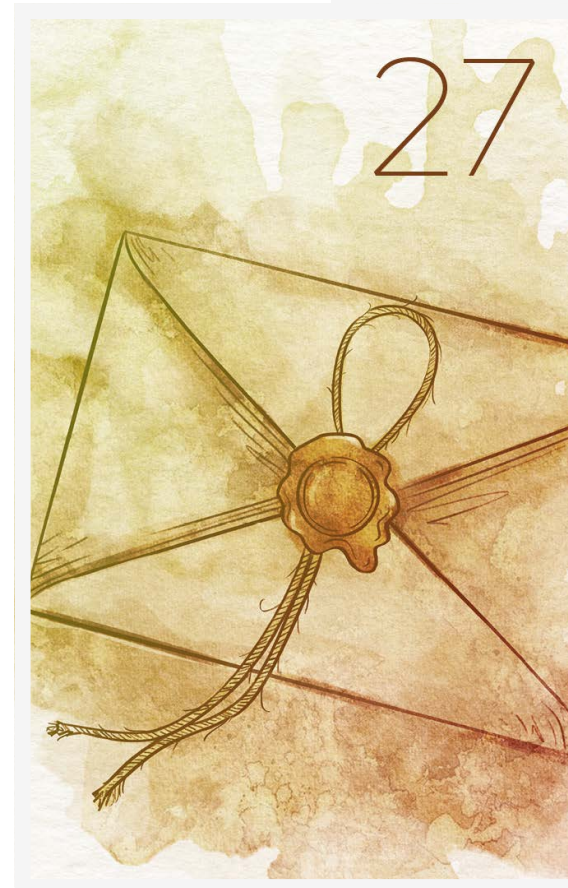
Communication and information

The letter is a symbol that has represented communication for a long time to people of all cultures and ages. In simple terms, a letter is a message recorded on paper, usually containing a personal message.

But in Lenormand the meaning of this card goes beyond that and stands for any form of communication, be it a personal conversation, a phone call or an email. The letter in Lenormand symbolism does not convey some superficial or meaningless information, it is always something personal or at least something that is of some importance to the recipient.

KEYWORDS

Communication, information, message, correspondence, written, news, telephone, conversation, letter, email, document, paper, diagnosis, short term, communicative



THE MAN

28

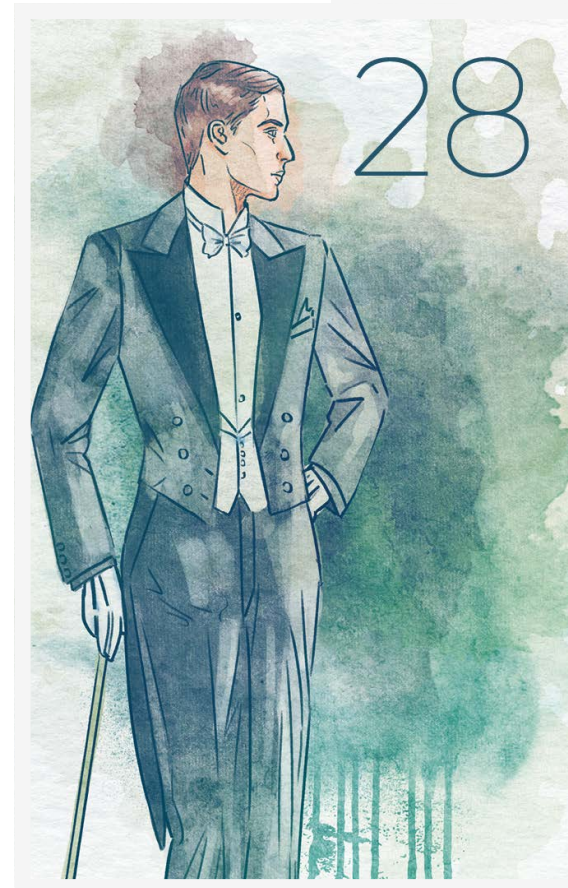
Male questioner

The cards with numbers 28 and 29 have a special meaning in Lenormand. Man and Woman are primarily person cards and represent the main person with his or her partner. If the questioner is a man, then he is symbolized by this card. If the person asking the question is a woman, then this card represents the partner of the questioner.

However, card 28 also represents masculinity or the male principle. It should also be mentioned here that the male and female principles are, of course, philosophical constructs that can apply to both men and women. In this sense, for example, the female principle can be applied to a man when the card 29 is associated with him.

KEYWORDS

Male questioner or partner of the female questioner, man, masculinity, male principle, activity



THE WOMAN 29

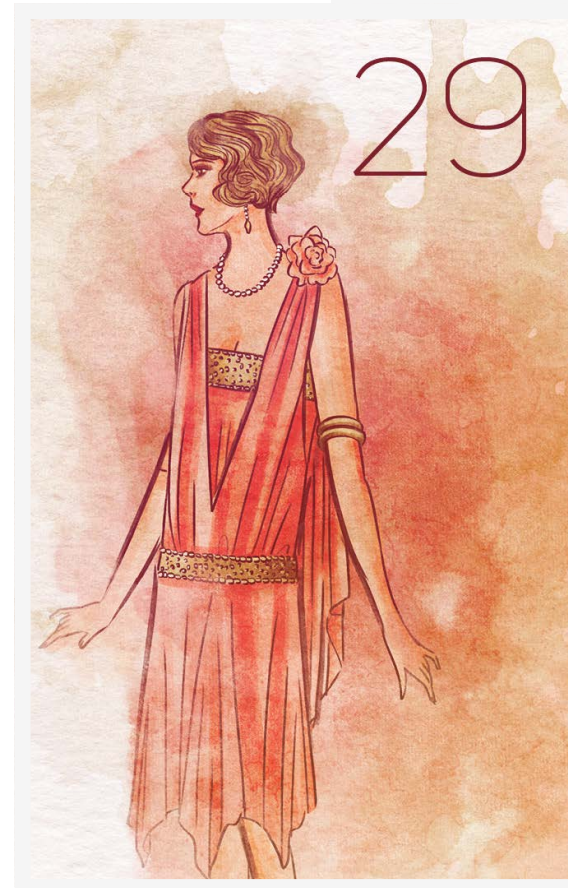
Female questioner

The cards with numbers 28 and 29 have a special meaning in Lenormand. Man and Woman are first of all person cards and represent the main person with her partner. If the questioner is a woman, then she is symbolized by this card. If the person asking the question is a man, then this card represents the partner of the questioner.

However, card 29 also represents femininity or the female principle. It should also be mentioned here that the male and female principles are, of course, philosophical constructs that can apply to both men and women. In this sense, for example, the male principle can be applied to a woman if the card 28 is associated with her.

KEYWORDS

Female questioner or partner of the male questioner, woman, femininity, female principle, passivity



THE LILIES

30

Sexuality and intimacy

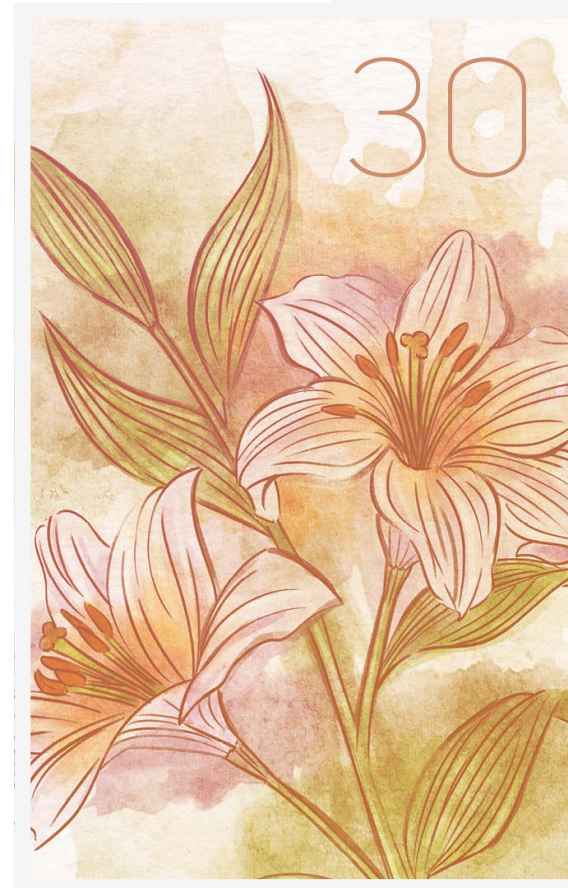
In Greek mythology, the lily is associated with Hera, the guardian of marital sexuality, who was also worshipped in many places as the goddess of childbirth. According to legend, the lilies were formed from a few spilled drops of milk from her breasts when Heracles drank from them.

Lilies come in many colors, but in Christian symbolism, primarily the white lily plays a role mainly as a sign of peace, grace, purity and virginity. On a more secular level, the lily was also used as a symbol of monarchy and rulership, which can still be found in many coats of arms of various noble and ruling houses.

In Lenormand, the lilies also serve as an activity card, indicating who has to take the initiative, or where to start.

KEYWORDS

Sexuality, intimacy, initiative, taking initiative, activity, romance, devotion, sexual pleasure, desire, passion, grace, forgiveness, peace, innocence, purity, monarchy, mercy



THE SUN

31

Greatest joy and fortune

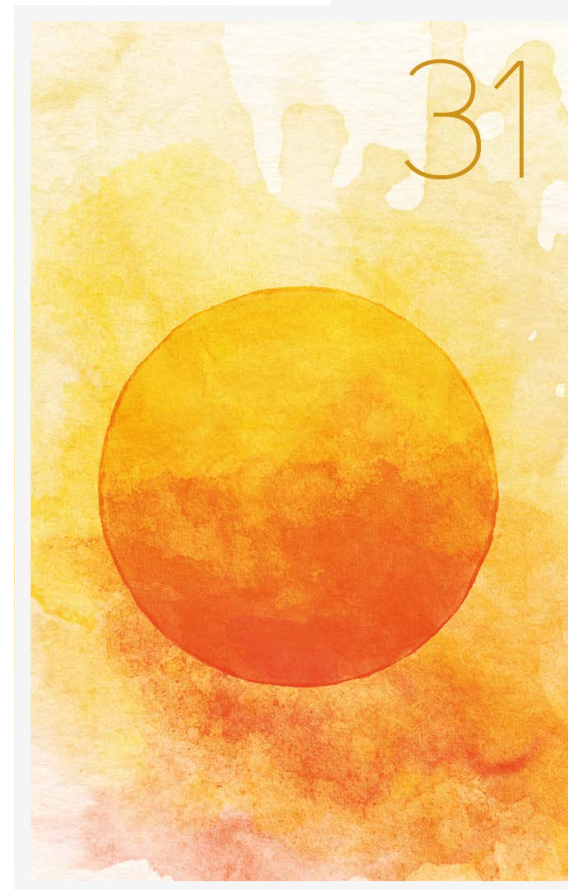
The sun, all life on earth depends on it and this outstanding fact was known to mankind from earliest times. The sun represents the energetic source of all life. It stands for energy, light, warmth and pure joy of life. The light of the sun makes things visible, therefore it also stands for awareness, alertness, truth and justice.

The sun is also an important component of many religious beliefs and traditions. In most polytheistic religions, the sun was worshipped as a deity that provided growth and prosperity. In Egyptian mythology, for example, it was worshipped as the sun god Ra. In the Christian tradition, the sun is also an important component of many icons and symbolism. It can be seen as a symbol of grace and the divine presence that shines down on earth.

Among the Lenormand symbols, the Sun is the most positive of all available cards. Whoever comes into contact with it benefits from its warmth and energy.

KEYWORDS

Greatest joy, fortune, zest for life, happiness, joie de vivre, energy, warmth, heat, fire, confidence, vitality, creative powers, brightness, light, fulfillment, alertness, optimism, summer, dryness, radiation



THE MOON

32

Psyche and inner workings

The moon symbolizes first and foremost the psyche and everything that happens inside the mind, whether consciously or unconsciously. It describes the thoughts and the feelings, but also intuitive perceptions or fantasies. It is always about the inner and subjective experience side of perception.

In addition, the natural characteristics of the moon also have an influence on its symbolic meaning. On the one hand it is a symbol for the night and therefore for darkness and sleep. On the other hand it orbits the earth in always the same cycles and affects the tides of the seas and many other natural processes of the life by its gravity. In this way it represents everything cyclic.

Also the moon has no own source of light, it reflects only the sunlight and in that way is a symbol for a mirror.

KEYWORDS

Psyche, inner workings, thoughts, introspection, intuition, whims, illusion, fantasy, sensitivity, subjectivity, melancholy, sleep, cold, cycles, rhythm, periodic, mirror, reflection, sentimentality, interior



THE KEY

33

Success and security

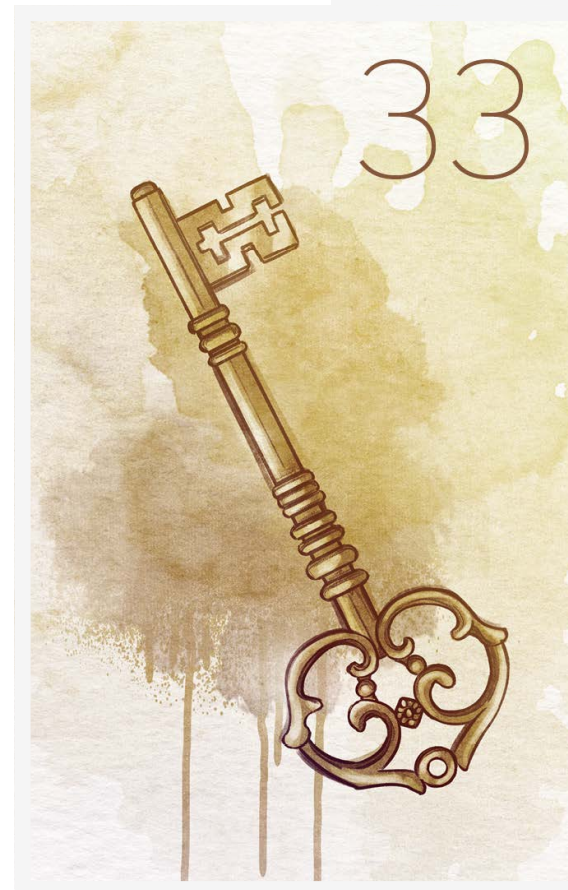
As a tool, the key is primarily used to open locks and it can look back on a tradition of many thousands of years in this use. Basically, it is always a method of access control, you want to protect something valuable from the access of third parties. This aspect of security has also established itself as the most important meaning of this Lenormand symbol.

Another facet of interpretation, closely related to the concept of security, is success. The key allows one to open doors that remain closed to others and puts the owner in an arriviste position. In this way, it symbolizes success, but also the intention behind something.

Also, this card can show what is important in a matter. It shows the key aspect of an issue or the key to the solution.

KEYWORDS

Success, security, certainty, fulfillment, access, conclusion, clue, solution, door opener, key element, reason, objectivity, logic, problem solving, opportunities, career, music, cryptography



THE FISH

34

Finances and feelings

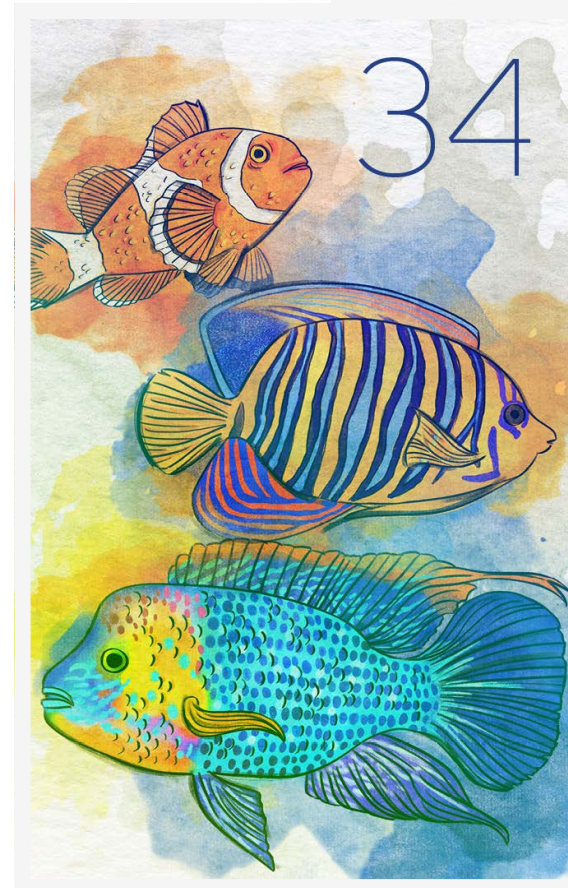
In many cultures, the fish has acquired a meaning as a fertility symbol due to its strong reproduction and it generally stands for abundance.

In Chinese, the word "fish" even sounds synonymous with the word "wealth". For many people it represents wealth and prosperity, which has also found its way into the symbolism of Lenormand.

Quite simply, however, fish are animals that live in water, so this element also finds its place in the interpretation of this card. As a symbol, water always represents the emotions and so we can also associate this concept with the fish.

KEYWORDS

Finances, money, possession, wealth, investment, payment, feelings, flow, baptism, purification, individuality, discretion, silence, alcohol, addiction, water, aquatic animals, underwater, below the surface



THE ANCHOR

35

Work and profession

An anchor is a device, normally made of metal and used to secure a vessel to the bed of a body of water to prevent the craft from drifting and make their position insensitive to wind, currents or waves. In this way, a ship is able to hold its position against external influences.

This property of the anchor is also what gives the symbol its meaning in Lenormand. In the broadest sense it is about holding on to people, objects or even ideas and the stability of a position. However, the fact that the anchor keeps the ship safely on land and protects it from drifting on the sea in stormy seas also makes this symbol an expression of hope and confidence.

In addition, the anchor in Lenormand is considered a signifier of work and profession, because this is an essential factor in life, which gives people support and stability.

KEYWORDS

Work, profession, occupation, job, assignment, manifestation, support, dependence, fixation, anchoring, hold on to, cling to, hold, comfort zone, stability, hope, hobby, culture, gain a foothold, commit, bent, cramp



THE CROSS

36

Fate and faith

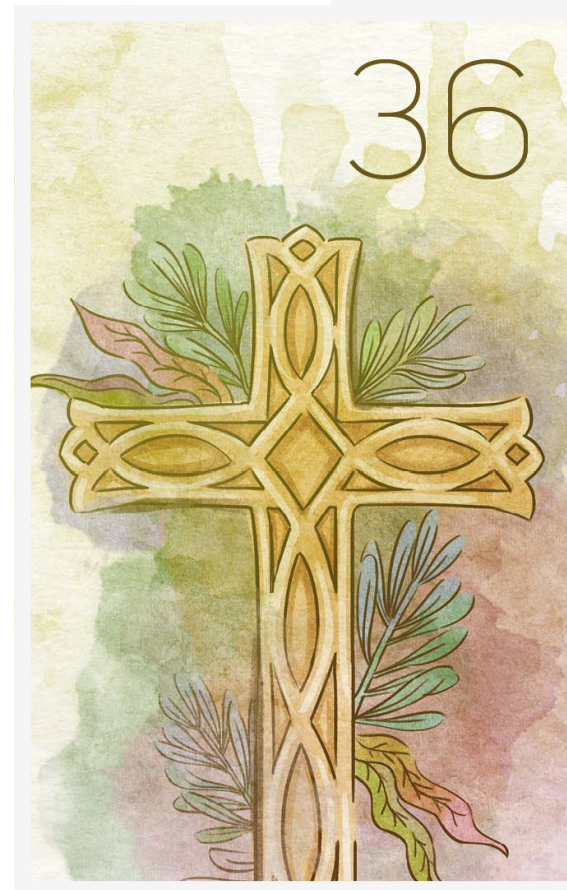
Worldwide, this symbol has a religious significance, and not only in Christianity. The cultic use of this symbol is already known from the Stone Age, and even pre-Christian religions used the cross as an expression of their belief in a higher power.

Thus, the cross in Lenormand represents first and foremost faith and religion. Closely connected with the religious interpretation is also the concept of fate. The belief in a higher power usually includes the conviction that the fate of man is guided or at least influenced by this power. The card of the cross always includes the idea of a certain predestination of events.

The fact that the cross usually contains something fateful makes this symbol an ultimate amplifier. Any card that connects with the cross gets a higher weight in its significance.

KEYWORDS

Fate, destiny, faith, life task, karma, world view, religion, burden, sacrifice, plus, synthesis, reinforcement, amplification, union of opposites, middle, averaging, in addition, adding something



**The INNOCENT
SECRETS LENORMAND
card deck is
available for purchase
at Etsy:**

[kartenorakel.etsy.com](https://www.etsy.com/shop/kartenorakel)

Innocent Secrets Lenormand

Author: Patrick Scheller

Publisher: Patrick Scheller, Brüder-Busch-Str. 53, 53721 Siegburg,
Germany, www.kartenorakel.com, info@kartenorakel.com

eBook Version: 1.1

Copyright © 2023 Patrick Scheller

All rights reserved. Reproduction, in whole or in part, only with the
written permission of the author.

Deck of cards depicted: Innocent Secrets Lenormand

Illustration: Julia Flohr

You can find more information about the Innocent Secrets
Lenormand on the website at:

<https://lenormand.cards>

And on the author's blog:

<https://kartenorakel.com>

The information in this eBook is for entertainment purposes only
and is not a substitute for medical, legal or other professional ad-
vice. Any liability of the author or the publisher is excluded.

