



MIAMONDO LENORMAND

A card deck by
Patrick Scheller

TABLE OF CONTENTS

- 03** **The Miamondo Lenormand**
A brief introduction to the Miamondo Oracle
- 04** **Using Lenormand cards**
A brief introduction to the interpretation of Lenormand cards
- 07** **The meanings of the Lenormand symbols**
An introduction to the basic meanings of Lenormand symbols
- 44** **Imprint**
Legal information

THE MIAMONDO LENORMAND

The word MIAMONDO is borrowed from the constructed language Esperanto and it means MY WORLD. In the light of this name, the Miamondo Lenormand wants to take you on a journey to some of the most inspiring places on earth. Each of the 36 symbols in this deck is placed in a unique location in this world and it expresses its own individual characteristics along with the characteristics of the respective locale.

The positive energy of the cards and the colorful design should inspire you to open yourself up to the beauty of this world, but also to become aware that not only the symbols of Lenormand hold a message for you, but also the place where they are presented.

Everything that touches your consciousness at any time your world can have a symbolic meaning for answering a question. The world, and therefore every place that reveals itself to you, is a mirror of your inner self. Be mindful of the special connections that may reveal themselves to you with the help of the Miamondo cards.

This deck of cards is inspired by the travel posters of the early 20th century. At that time, traveling involved a much greater effort than it does today, both technically and financially, and photos from all over the world, like the ones you see everywhere on the Internet today, were hard to find. Thus, back then, graphic promotional posters were created to awaken a longing in people for faraway places and to fire their imagination.

In the same way, the Miamondo Lenormand is meant to take you on a journey through the world in your mind and bring the deepest longings and thoughts of your subconscious to the surface.

I wish you an inspiring journey and deep insights,

Yours, Patrick Scheller

USING LENORMAND CARDS

Every Lenormand deck consists of 36 cards, each of which has a specific symbol and a fixed number. The symbols in Lenormand are characterized above all by the fact that they do not contain mystical and hidden secret signs, as is the case in the Tarot. They show simple images that are absolutely familiar to you from your surroundings, that you encounter regularly in your life and whose meaning you can often grasp intuitively, even without having learned them before. It is precisely this circumstance that makes Lenormand as a divination system so accessible and easy to learn.

Each card in the Lenormand deck can be understood as a placeholder for different terms and concepts. The Clover for example means luck, the Coffin represents mourning or the Dog stands for friendship. Every person will immediately intuitively understand these symbolic connections. The specific meaning that a symbol has in any context, usually has evolved and grown over centuries. In some cases, it's a statement that can be agreed upon by everyone in the world. Other symbols, on the other hand, are culturally determined and can take on very different meanings in different regions. Ultimately, the meaning is always dependent on you personally.

Additionally, in the Miamondo Lenormand each card also represents a place. What this particular place means to you personally can expand the meaning of the Lenormand symbol and make it more complex.

Answering questions

There are many ways to read and interpret the cards in Lenormand. To explain this in detail is far beyond the scope of this digital booklet. Nevertheless, I would like to briefly describe the basic procedure here.

First of all, you should be completely clear about what exactly you want to know and, above all, why? Only when you have a precise idea of what your question actually is and how to phrase it, will you be in the position to expect a satisfactory answer from the cards. In particular, you should choose the wording openly, i.e. in a way that it cannot be answered by a simple yes or no.

The next step is to shuffle the cards and then lay them out. There are different systems for this, such as the Grand Tableau or the Celtic Cross. As a beginner, however, I would recommend that you start with a simple three-card draw. You draw the cards from the deck and lay them out in a row in front of you. Then you interpret the symbols and answer the question in a complete sentence.

Examples of classic interpretations of a three-card spread

What can I do to find myself again?

Tree, Ship, Sun. Give yourself some time off (Tree) and take a trip (Ship) to a sunny and warm location (Sun).

Which feelings connect us?

Cross, Key, Anchor. The belief (Cross) in success (Key) and in perseverance (Anchor) connects you.

How will the conversation with my supervisor go next week?

Scythe, Clover, Park. It is to be expected that the conversation will not be very pleasant (Scythe and Clover) and it will be about the customers (Park), possibly customer complaints.

How will my relationship develop in the near future?

Ship, Stars, Mountain. Common goals (Ship) will emerge (Stars) in the relationship and dissolve resistance (Mountain).

What can I do to get his attention?

Woman, Dog, Man. Woman and Man are looking in different directions here, which is a confirmation that the Man is indeed not aware of the Woman. Between them lies the Dog as a symbol of friendship and loyalty. The cards say that the Woman should express her loyalty to the Man in order to get his attention.

Special features of the Miamondo Lenormand

On the following pages I will introduce you to the classic 36 symbols of Lenormand. You will learn how their meaning is derived traditionally and with which keywords they can be associated.

A special feature of the Miamondo Lenormand is the respective connection of the symbols with an extraordinary place. Each of these places have their own history, which you can build into your own interpretation of the cards. But also the very personal experiences that you may have already had with a certain place can influence the meaning of each card.

For example, the card with the number 3, the Ship, can stand very specifically for the city of Sydney or for the country of Australia. However, it can also represent any other exotic harbour city, or simply represent a far away place. Considering the history of Sydney, this card can also be seen as a symbol for a colony, with all the associations that can be derived from that word conceptually. But also freedom or the detachment from the “motherland” can possibly be an interpretation that can make sense in some cases, when you apply it figuratively. For example, in a card reading on a relationship question, the ship here can become a symbol for detachment from the parents.

A whole book could be written about each of the localities that have found their way into this deck of cards. In the descriptions of the cards I hint at some points that are relevant to the meaning of the symbols. You can take that as a starting point for your own further explorations of the symbolism.

The best way to really dive into the world of Miamondo Lenormand is to do your own research, to study the location and the details depicted in each card, and in this way find your very own meaning for each of the 36 cards, which as a result you can then feel intensely. In this way, intuition will develop over time, with which you will receive answers to all your questions. Let your own creativity guide you in the interpretation of this card deck.

THE RIDER

01

Good news and movement

In earlier times, a horse was the fastest means of transportation at one's disposal, and people also liked to use it to deliver important news. The arrival of a mounted messenger was usually good news, because he brought the longed-for information.

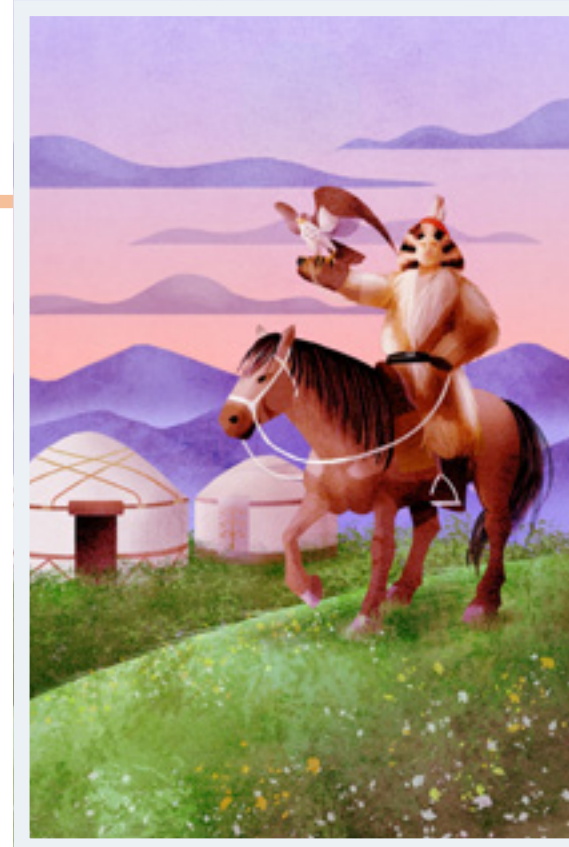
The horseman is depicted here as a proud eagle hunter against the backdrop of a vast Mongolian grass steppe. In the background two yurts can be seen, the traditional tents of the nomadic horsemen in Central Asia. In this way the card symbolizes movement, not standing still and taking up new locations or also different points of view again and again.

LOCATION

Mongolian plains, Mongolia

KEYWORDS

Good news, messenger, positive outcome of a situation, movement, departure, progress, expansion, means of transportation, traffic, trade, speed, quickness, activity, beginning, sport, livestock, car



THE CLOVER

02

Good luck and gambling

In nature, this small and inconspicuous plant is usually found as a three-leaved variant, which is why you need a little luck to hold a four-leaved specimen in your hands. For this reason, people have always seen the rare clover leaf as a symbol of good luck. Nevertheless, the clover in Lenormand describes only a brief moment of good fortune or a small win.

The clover, which is revered as a national symbol in Ireland, is depicted here in front of the Cliffs of Moher. The color scheme of this card is also based on the colors of the Irish national flag. The cliffs that can be seen behind the shamrocks remind us that happiness can be very fleeting if you risk too much and take a small step beyond your limits. In this sense, the clover always symbolizes the gain as well as the risk, that is inherent in any uncertain circumstance.

LOCATION

Cliffs of Moher, Ireland

KEYWORDS

Luck, small profit, gamble, chance, risk, serendipity, good fortune, small gain, joy, fun, humor, amusement, grass, fertilizer, feed, raw food, short term, short duration



THE SHIP

03

Dreams and desires

In earlier times, the ship was the best way to travel great distances and explore foreign worlds. Emigrants often used this way over the water to reach faraway places and start a new life. But the ship was not only a means of transportation, it was also a symbol of freedom, a way to realize one's dreams and desires. Such a voyage into the unknown was always accompanied by a good dose of adventure and courage.

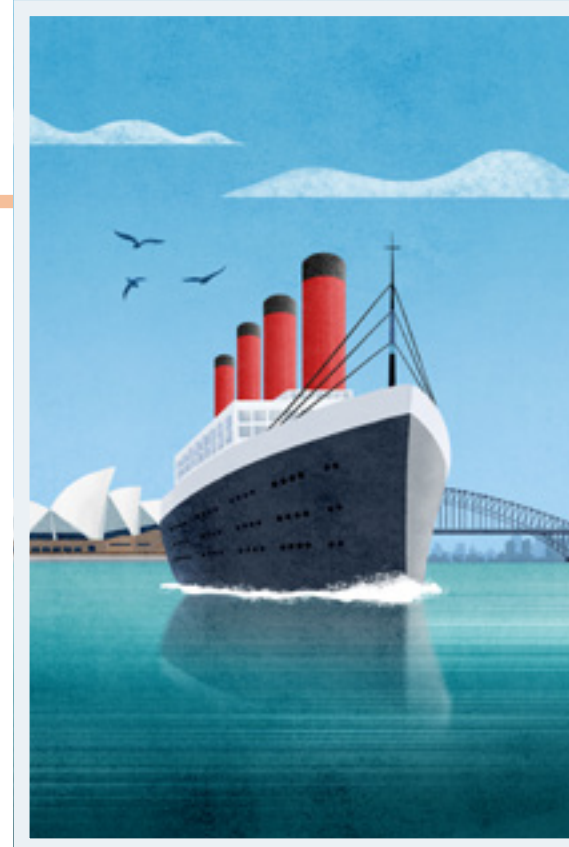
Here the ship is shown in the bay of Sydney, whose history is also marked by its origins as a British penal colony. However, Sydney very soon developed into an independent cosmopolitan city and a place of longing for many people who wanted to turn their dreams into reality far from home at the other end of the world.

LOCATION

Sydney Cove, Sydney, Australia

KEYWORDS

Dreams, desires, goals, wishes, freedom, leaving something behind, courage, foreign, far away, abroad, journey, means of travel, water, sea, tides, waves, up and down, sway, spirit of exploration, adventure



THE HOUSE

04

Family and stability

The house is a building that provides shelter for people and in which you can reside. However, it is much more than a place to live, it is also a place of retreat that provides both protection and security. It represents the center of the family's life, a home. Generally the house symbolizes everything that is not public, but private.

In this card the house is depicted as a traditional country house in Provence, France. These rustic and solid stone houses emphasize the commitment to tradition with their originality. In front of the house you can see the lavender fields, typical for this region. In symbolism, this plant stands for defense against evil and for purity. In difficult situations, lavender soothes the soul, supporting the importance of the house as a retreat for the family.

LOCATION

Provence, France

KEYWORDS

Family, solidity, firmness, base, building, living, living situation, place of residence, locality, origin, home, security, habit, privacy, comfort zone, place of retreat, planning for the long term



THE TREE

05

Health and tranquility

The tree is one of the oldest symbols in human history and is literally deeply rooted in many cultures. Many tree species grow to be ancient in comparison to humans. Some, like the Sequoia trees in Sequoia National Park in California shown on this card, even live to be several thousand years old.

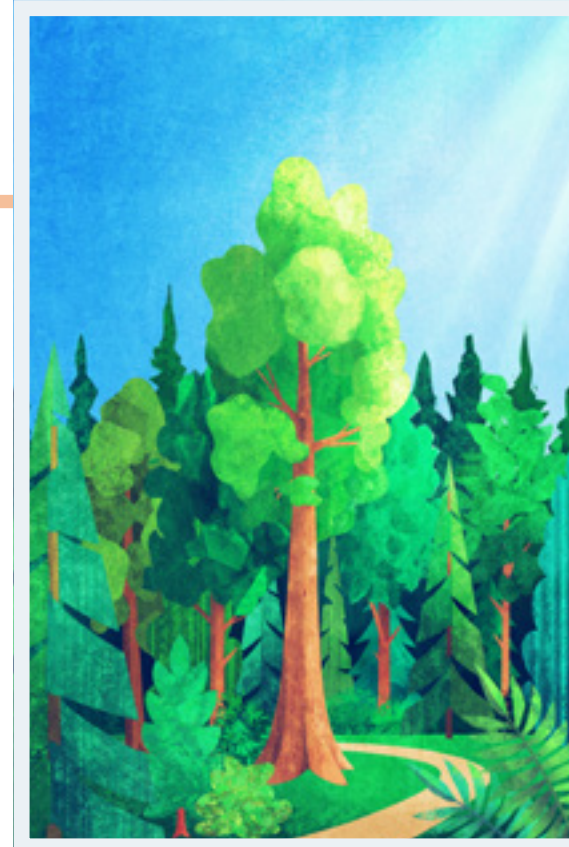
So it stands to reason that the tree is understood as a symbol of health, longevity, and life in general, but also of nature as such. Through its appearance and the seemingly eternal growth of the various branches and leaves, the tree also embodies the terms development and growth. In naturopathy, the Sequoia is used against burnout and exhaustion. It has an invigorating and refreshing effect on body and mind.

LOCATION

Sequoia National Park, California, USA

KEYWORDS

Health, calmness, serenity, longevity, life, rootedness, forest, wood, nature, naturalness, pause, rest, monotony, long-term growth, patience, immobility, genealogy, family tree



THE CLOUDS

06

Fear and uncertainty

In the past, people were even more at the mercy of the forces of nature than they are today. Dark clouds appearing on the horizon often meant a serious danger to life and limb. No wonder then, that clouds are generally associated with fear and threat. Also in common parlance this has anchored itself in idioms like saying that dark clouds are gathering on the horizon.

The Potala Palace in Lhasa, Tibet, pictured here under the clouds, was for a long time the official residence and seat of government of the Dalai Lamas. In this sense, this place reminds us that Buddha saw through fear and overcame it. By embracing fear, becoming aware of it and recognizing its origin, we take away its power over our lives.

LOCATION

Potala Palace, Lhasa, Tibet

KEYWORDS

Fear, ambiguity, uncertainty, non-transparency, opacity, cover-up, obscurity, fog, air, wind, storm, threat, crime, pessimism, autumn



THE SNAKE

07

Complications and detours

The innate aversion of most people to snakes and their extensive demonization within the Christian tradition, have probably contributed to the fact that a rather negative image of this symbol has settled in the minds of people. In the seduction of Eve in the Old Testament, the snake represents sin. More generally, the serpent represents all kinds of complications. But the snake also embodies positive aspects. Through its ability to shed its skin again and again, it stands for transformation.

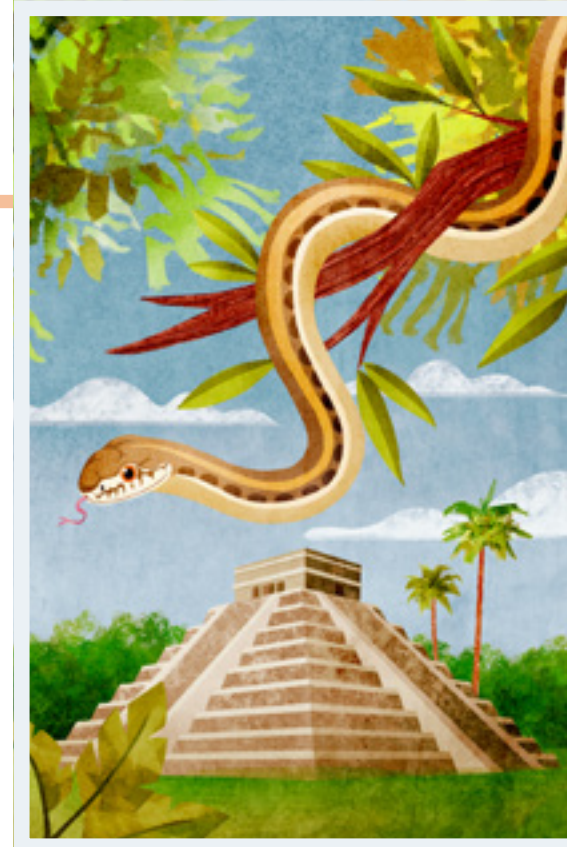
The snake is depicted here in connection with the pyramid of Kukulcán in Mexico, on whose steps a remarkable shadow play can be observed every year at the equinox. The shadows seen on the steps of the pyramid give the impression of a snake winding its way down the pyramid.

LOCATION

Pyramid of Kukulcán, Chichén Itzá, Mexico

KEYWORDS

Complications, difficulties, complicated, detours, serpentines, zigzag, tortuous, mother, transformation, temptation, seduction, sin, intelligence, medicine, natural medicine, poison, slipperiness



THE COFFIN

08

Deep sorrow and finality

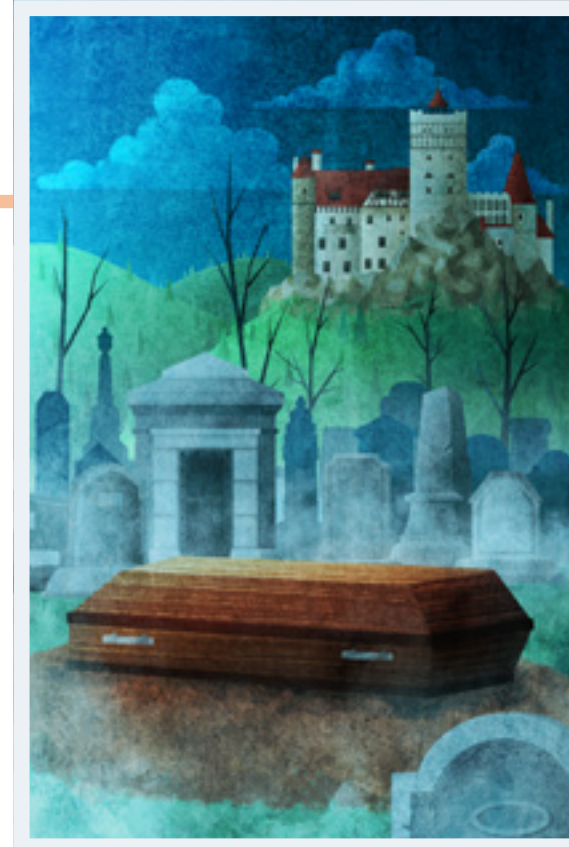
As an object, the coffin represents, first of all, a container for the burial of a corpse. But beyond that, the main message of this card is the enormous grief that usually accompanies the coffin. Great sorrow, suffering and unhappiness are the main meanings of this card, but so are farewells, mourning and generally the end of things. But the coffin not only has negative sides, it can also be a symbol of the transition to a new stage of life and indicate a process of maturity or even release from a depressing condition. The coffin is seen here in a Romanian cemetery in the immediate vicinity of Bran Castle, which according to unconfirmed legends, belonged to Prince Vlad III Draculea, Count Dracula's historical role model. This analogy is meant to remind us that grief takes away a person's courage to live and sucks at him, just as the vampire sucks at his unfortunate victim.

LOCATION

Bran Castle, Transylvania, Romania

KEYWORDS

Great sorrow, suffering, unhappiness, afterlife, farewell, end, grief, loss, trauma, shadow, transition, maturation, redemption, depression, release, joylessness, paralyzing, eternity, sickness



THE BOUQUET

09

Joy and harmony

Looking at a sea of colorful flowers, you are immediately overcome with a feeling of joy and harmony. The colorful variety of flowers stands for beauty and creativity. In addition, in almost all cultures of the world, flowers are also presented as a sign of appreciation, recognition and gratitude to people one cares about. Whether as a simple gift at a social gathering or as a symbol of special affection for a loved one.

This Lenormand symbol is depicted here as a Japanese Ikebana arrangement in front of the Itsukushima Shrine in Miyajima, which is a sacred place of reverence and thus aptly supports the meaning of flowers as a symbol of harmony and gratitude. Looking at Ikebana as an art form also gives this card an additional twist for symbolizing art in its plentiful expressions.

LOCATION

Itsukushima Shrine, Miyajima, Japan

KEYWORDS

Joy, harmony, creativity, art, conviviality, gift, gratitude, contentment, beauty, politeness, courtesy, festivity, gathering, fast growth, fragrance, bouquet, charm, spring



THE SCYTHER

10

Danger and pain

The scythe has a long tradition in agriculture. First and foremost, it is a tool for cutting grass and grain, which makes it a symbol of the harvest. Equally, however, it is also quite a dangerous instrument that can cause serious injuries and was used as a weapon. Analogous to its sharp point, the scythe brings something to the point, it often points to something in the cards that you better not ignore. In a figurative sense, the blade of the scythe can also be a symbol of cutting something off, parting with a person, thing or an idea.

Pictured is a farmer in front of a cornfield in Thaxted. He has stopped harvesting and is busy sharpening his scythe. Thaxted was a center for blade making in the Middle Ages, which can still be seen today in the crossed swords on the town's coat of arms.

LOCATION

Thaxted, England

KEYWORDS

Danger, pain, injury, aggression, shock, suddenness, surprise, intent, weapon, tool, iron, agriculture, harvest, sharp incision, separate, detach, cut off, farming, lightning



THE RODS

11

Dispute and doubt

A rod is a bundle of leafless twigs. It can be used for a wide variety of purposes, but for a long time it was popularly used as a chastising tool for punishment. In the broadest sense it stands for the quarrel, that is, a disagreement or dispute that can have a hurtful character and in this way often contains a certain portion of aggression. In any case, the rod is about opposing positions that have clashed and seek resolution under pain. Any confrontation of this kind is associated with doubts, either about one's own position, or that of the other person.

No place can better represent the meaning of this card than Jerusalem, which has witnessed the most diverse religious, cultural and political conflicts over thousands of years.

LOCATION

Jerusalem, Israel

KEYWORDS

Dispute, quarrel, doubt, confrontation, communication, conversations, accident, discord, negotiation, disruption, rupture, conflict, punishment, chastisement, double



THE OWLS

12

Sorrow and stress

The owl is a nocturnal animal that often stays in places that are scary to people. Their piercing gaze and mysterious aura have thus led to the formation of rather negative superstitions around these animals since the Middle Ages. They were often seen as a symbol of approaching death, or more generally as a harbinger of bad luck. Hearing the call of an owl alone in the woods at night still makes many people shiver and feel a certain anxious unease. On the other hand, owls have also been revered since ancient times as a symbol of wisdom and are considered counselors with prophetic abilities.

Athena, the Greek goddess of wisdom and namesake of the city of Athens, chose the owl as her companion. She was described by Homer as owl-eyed because she saw things that took place in the dark and that others could not see.

LOCATION

Athens, Greece

KEYWORDS

Sorrow, stress, worry, hassle, everyday worries, tribulations, unrest, agitation, commotion, chatter, gossip, nervousness, workshop, advice, wisdom, consulting, prophecy, half, share, seeing, grandparents



THE CHILD

13

Novelty and new beginning

First of all, the child stands for a person who is in the stage of life between birth and adulthood. It thus symbolizes in a very natural way the life that wants to develop. With great curiosity and impartiality, the little creature enters the world anew to explore and experience it. Inevitably, however, this is also associated with a certain naivety and dependence on parents, i.e. on people who are already more developed and can draw on a greater wealth of experience.

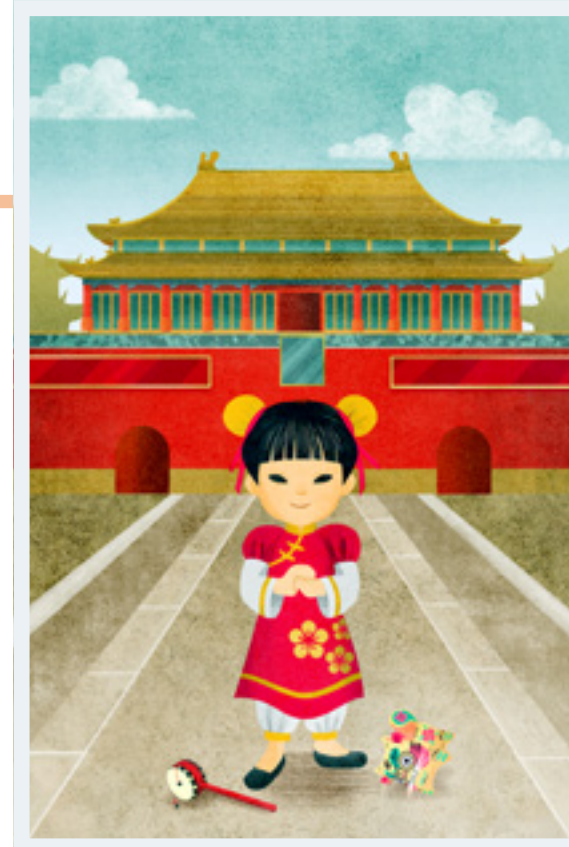
Pictured here is the child in front of the Forbidden City, the imperial palace of Beijing, where the last emperor of China lived, who ascended the throne at the age of 2 years. The palace was an area accessible only to selected people, which shielded the emperor and his entourage from the influence of the outside world.

LOCATION

Forbidden City, Beijing, China

KEYWORDS

New beginning, novelty, child, infancy, unpreparedness, something small, something new, immaturity, curiosity, naivety, innocence, trust, lack of independence



THE FOX

14

Falsity and lies

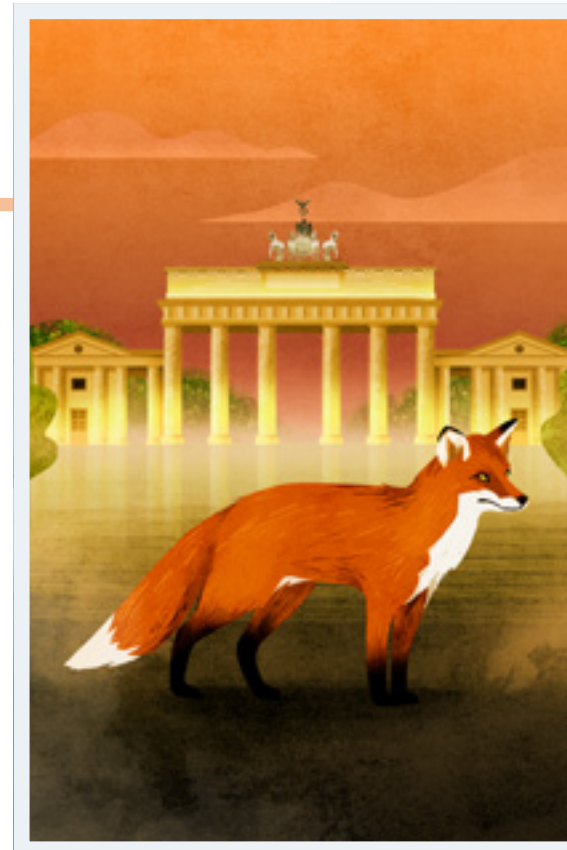
The fox is an animal that has found its place in legends and fairy tales all over the world. There are numerous similarities and parallels in the global fox myths. For example, it is mostly associated with unflattering terms such as deceit, adultery and theft. The latter is probably based on the propensity of this animal to steal the farmers' livestock. In the Bible, the fox is also mentioned several times and symbolizes there a false prophet and the epitome of guile. But there are more positive qualities as well, like cunning, camouflage and caution that can be associated with the fox. To this day, this double meaning of the fox can be found in the idiom of calling someone a sly fox, thus expressing an assessment that is not exclusively positive. The fox is depicted here in front of the Brandenburg Gate in Berlin, the political center of Germany.

LOCATION

Brandenburg Gate, Berlin, Germany

KEYWORDS

Falsity, lie, deception, disguise, hypocrisy, cunning, trickery, shrewdness, deceit, scam, selfishness, self-interest, camouflage, caution, distrust, warning, something goes wrong



THE BEAR

15

Strength and power

The bear is a powerful and mighty creature in the animal kingdom. With its massive life force the bear prevails against all odds in nature. The cultic worship of this impressive animal has a long tradition in the history of mankind. The first traces can already be found in cave paintings, which are over 70,000 years old and which allow us to draw conclusions about the special position that the bear occupies from man's point of view. The physical characteristics of size, strength and assertiveness, combined with its apparent serenity, are prominent features of this animal and have thus made him a symbol of self-confident authority and sovereignty.

The bear is shown here in its natural habitat, against the impressive but also challenging backdrop of the overwhelming beauty of Alaska.

LOCATION

Alaska, USA

KEYWORDS

Strength, power, respect, authority, magnitude, greatness, order, straightforwardness, support, stability, self-confidence, sovereignty, competence, perseverance, assertiveness, dominance, father



THE STARS

16

Clarity and spirituality

The infinite vastness of the universe and the multitude of its stars, planets and galaxies give this symbol its framework. However, the stars can actually only be seen at night and when the sky is clear and cloudless. The observation of the celestial bodies has fascinated people from the earliest times and filled them with great awe. The sight of the stars and the observation of their movement on regular paths, gives the feeling of being part of a greater order. In the common phrase “reaching for the stars,” one can see the way in which this symbol has become embedded in people’s minds. They can symbolize the pursuit of goals, values and ideals.

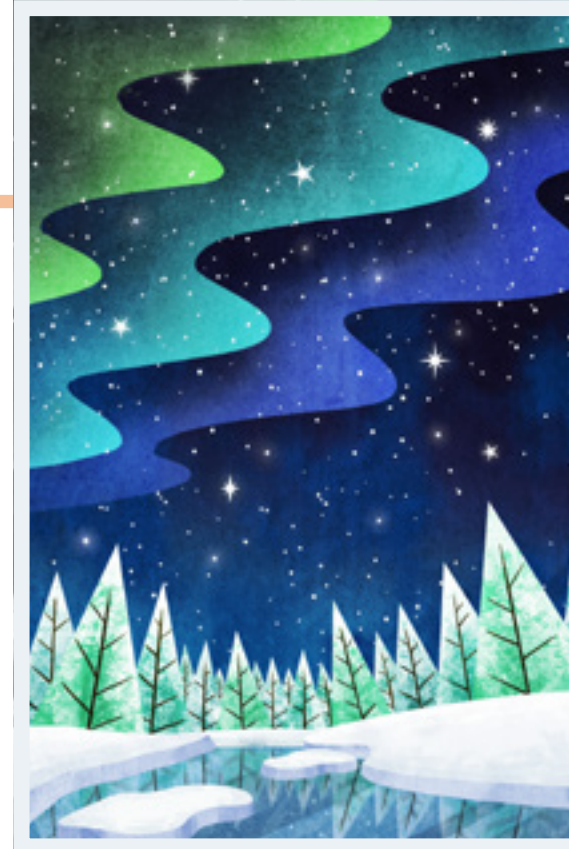
Pictured here is a wintry landscape in Lapland, with a clear starry sky and the auroras that can sometimes be observed there, symbolizing the supernatural.

LOCATION

Lapland, Finland

KEYWORDS

Clarity, spirituality, sensitivity, abundance, fullness, genuine, perfection, much, potential, confidence, values, ideals, sky, astronomy, night, constellation, esotericism, astrology



THE STORKS

17

Change and modification

The annual return of storks in spring heralds the end of the cold winter and the profound changes in nature that come with it. Traditionally, the stork is a fertility symbol and a lucky charm. This view was shaped not least by fairy tales and legends. But it is a fact that the monogamous storks take care of their offspring very intensively and that the young birds in return also take care of, feed and protect the old or sick parents. Perhaps this special behavior has also led to the stork being seen as the bearer of the children. But also the fact that storks with impressive ease in flight cover great distances and thus profoundly change their location and living conditions, give this card a meaning. You can see here the backdrop of Ribe, the oldest city in Denmark, where thousands of pairs of storks used to gather every year.

LOCATION

Ribe, Denmark

KEYWORDS

Change, modification, variation, upheaval, transformation, mobility, fertility, airplane, flying, something comes easily, float, move forward quickly, balance, lightness



THE DOG

18

Loyalty and friendship

Already about 12,000 years ago the dog was domesticated by man and since that time he is an epitome of the faithful friend. He accompanies man in all circumstances and is devoted to him, even in death. In Lenormand this card symbolizes first of all exactly those qualities of the dog, which we appreciate so much: Loyalty and friendship. In addition, the dog is a pack animal, which is accustomed to live in a fixed hierarchy and subordinate if necessary. He has a strong sense of territory and is ready to defend his home and the members of his pack at any time.

Pictured here is a St. Bernard in front of the hospice on the Great St. Bernard, founded in 1050. This breed of dogs originated in Switzerland in the 17th century, bred by Augustinian monks and used there mainly as an avalanche dog to come to the aid of buried people.

LOCATION

St. Bernard Pass, Switzerland

KEYWORDS

Loyalty, friendship, commitment, sincerity, reliability, alertness, vigilance, helpfulness, comradeship, honesty, virtue, attachment, sticking with something, hierarchy, subordination, follow



THE TOWER

19

Isolation and separation

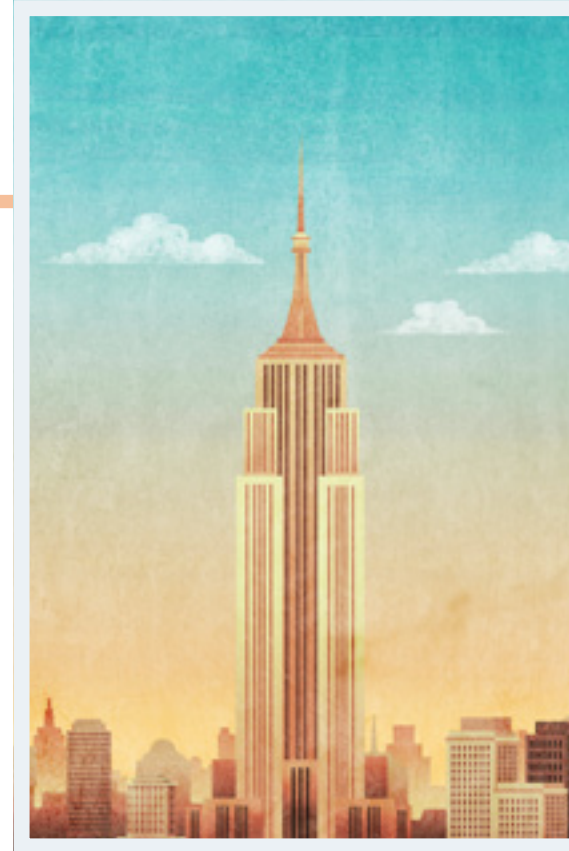
The tower is a structure that defines itself primarily by its height and that excels its surroundings by far. With its thick stone walls, it can be a place of retreat that separates, delimits and protects the inhabitants from outside influences. But it can also be a prison that prevents the inhabitants from connecting with the outside world. In any case, the separating and delimiting is an important factor in understanding this card. In addition, the tower has always been a status symbol, representing the human urge to reach new heights. Whether you look at ancient castle towers or modern office skyscrapers, it's always about the representation of power and the human urge to push beyond its own limitations. On display here is the Empire State Building in New York, built in 1931, which for a long time was the tallest building in the world and which to this day is surrounded by a special myth.

LOCATION

Empire State Building, New York, USA

KEYWORDS

Separation, isolation, complete loss, reserved, distinction, delimitation, demarcation, wall, border, protection, entrepreneurship, company, teaching, university, high building, masonry, protection, rise, status symbol



THE PARK

20

Public and facade

The park is first of all a public place where you can meet many people and this aspect is also the most important element in the interpretation of this card. It is about the social environment, but not necessarily about people close to you, it is rather broadly defined about public life. In addition, the park is also a place of leisure, relaxation and recreation. Despite all openness, however, it is not a place where one turns one's innermost self inside out. In a certain way, only a façade is shown, a mask is put on and you only present yourself in public as you would like to be seen by others.

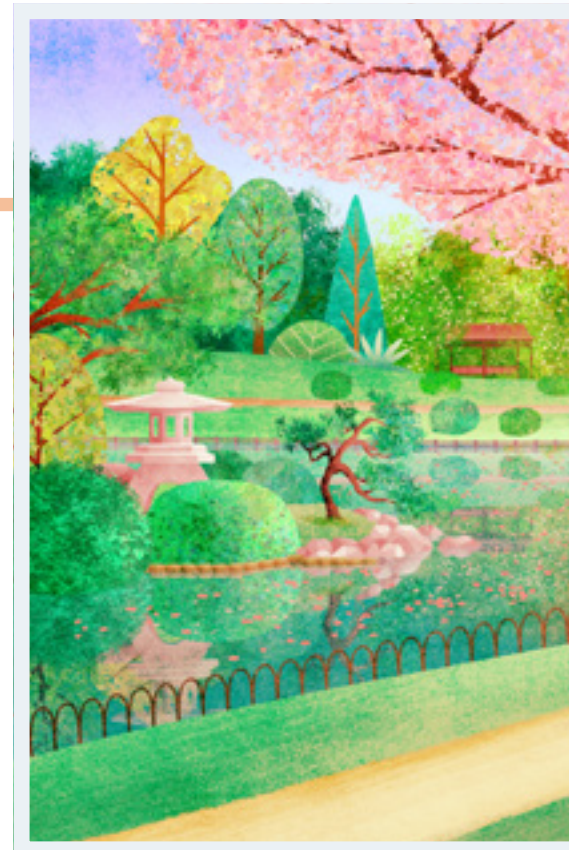
Shown on this card is the Shinjuku Gyoen Park in Tokyo with its beautifully designed ponds and gardens. This park is also known for its cherry trees, whose blossoming is the occasion for public celebrations throughout Japan.

LOCATION

Shinjuku Gyoen Park, Tokyo, Japan

KEYWORDS

Public, publicity, facade, externalities, institution, authority, association, party, public space, internet, celebrity, acquaintances, fame, leisure, openness, social life, obvious, audience



THE MOUNTAIN

21

Obstacles and blockades

The mountain represents an imposing elevation in the landscape, which knows how to impress the viewer with its immense size and apparent insurmountability. Viewed soberly, however, the mountain is first of all simply an obstacle that blocks the way and that wants to be conquered. To overcome an obstacle or to dissolve the blockages, great efforts are necessary. In the spirit of this card, overcoming the mountain takes time. The mountain is always a challenge.

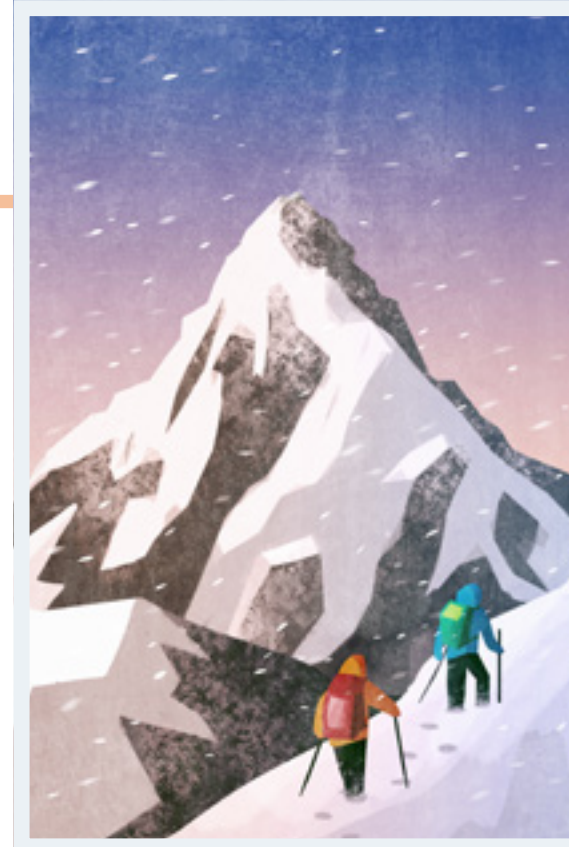
A dare of a special kind for every mountaineer is Mount Everest, which is the highest mountain on earth with 8848 meters. No obstacle could be bigger and yet it is possible to conquer it. The snowfall and the climbers trudging through the deep snow symbolize the effort and overcoming resistance that is needed to reach the summit.

LOCATION

Mount Everest, Himalaya

KEYWORDS

Obstacle, blockade, blockage, challenge, burden, resistance, difficult, problem, delay, reaching one's limits, hardness, stone, minerals, summit, mountains, winter



THE WAYS

22

Decisions and options

Paths or roads are first and foremost just connections between different places. They make it possible to easily get from one point to another, or to explore an unknown area. Different paths are usually connected to each other in a network and they cross each other. If you arrive at a crossroads, then you are confronted with several options, each option leading to a different result or destination. Crossing paths in this way represent a choice one must make or an alternative that opens up to you.

The Lenormand symbol of the ways is depicted here in the barren desert landscape of Arizona. The stones lying along the path represent the obstacles that had to be cleared to pave the way and allow a decision to be made. The cacti symbolize that decisions can sometimes be difficult and painful.

ORT

Arizona, USA

STICHWORTE

Decision, turning point, direction, options, alternatives, decisiveness, causality, continuity, consideration, choice, the way out, direction, street, crossroads, road, orientation, network



THE MICE

23

Partial loss and deficiency

These small rodents have a long and ambivalent history with mankind. In the sense of Lenormand, these animals are seen primarily from their not so pleasant side in the role of food pests. They often gnaw unnoticed for a long time on anything that can be found, leading to a constant loss of supplies for humans.

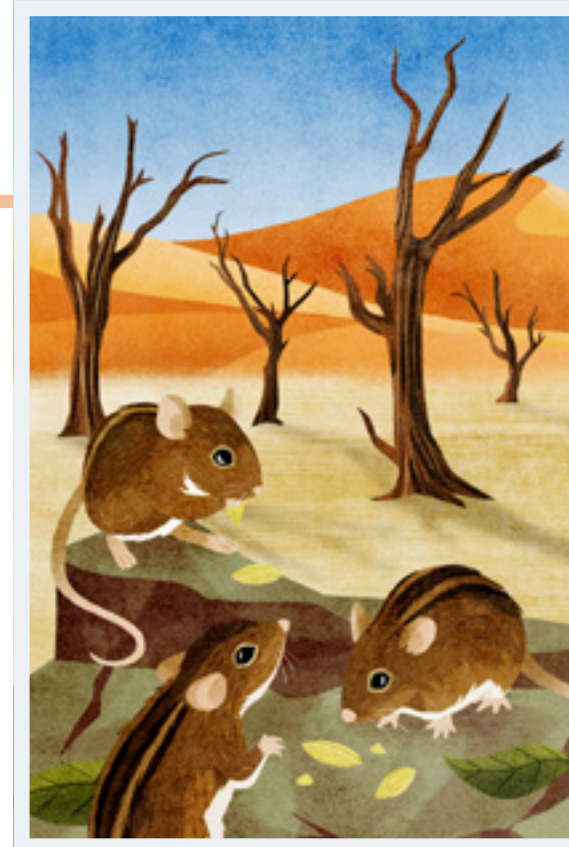
The mice are seen here in the Namib Desert in Namibia. Typical for this landscape are the fossilized and up to 500 years old acacia trees, which testify to the formerly existing water in this place and thus impressively underline the loss that the mice symbolize in Lenormand.

LOCATION

Namib Desert, Namibia

KEYWORDS

Partial loss, deficiency, humility, lack, decrease, taking something away, abandonment, renunciation, reduction, dwindling, nutrition, food, dirt, filth, thrift, disgust, low value, stinginess, theft, lack of self-esteem



THE HEART

24

Love and affection

The heart has always been a symbol of love and the place where intimate feelings reside. Its typical shape probably goes back to the stylized representation of ivy leaves, which in ancient times were seen as a symbol of eternal love. The significance of the heart as the originator of feelings can already be found in antiquity, and to this day we find this connection in our everyday language use, for example, when we speak of something going to our heart, or of pouring out our heart to someone.

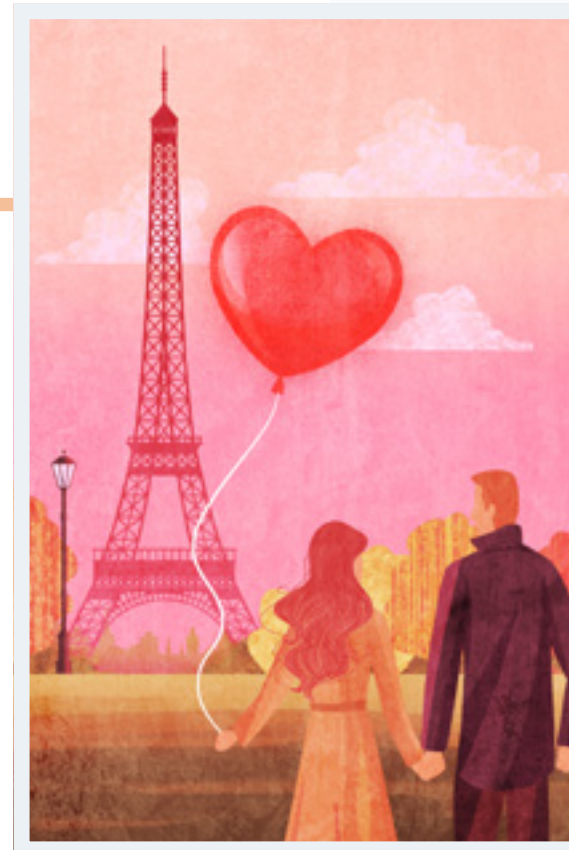
The place of encounter for this Lenormand symbol is the city of love, Paris. The Eiffel Tower, pictured in the distance, is not only a world-famous landmark of the city, it is also a place of longing for lovers and probably witness to countless marriage proposals at this romantic place in front of the Champ-de-Mars.

LOCATION

Eiffel Tower, Paris, France

KEYWORDS

Love, intimate feelings, infatuation, kindness of heart, affection, esteem, adoration, sympathy, enthusiasm, rapture, charity, self-love, rhythm, pump, blood, flesh



THE RING

25

Relationships and contracts

Rings are one of the oldest pieces of jewelry in the world. They are worn by women and men alike. But their significance goes far beyond that of a mere object of value. Often they represent a sense of belonging, sometimes they are an expression of power or a profession of faith. But they are always a symbol of attachment to a person, a group, an idea or a cause. In earlier times, important documents were also concluded with the help of a signet ring, the ring so to speak seals the conclusion of a contract.

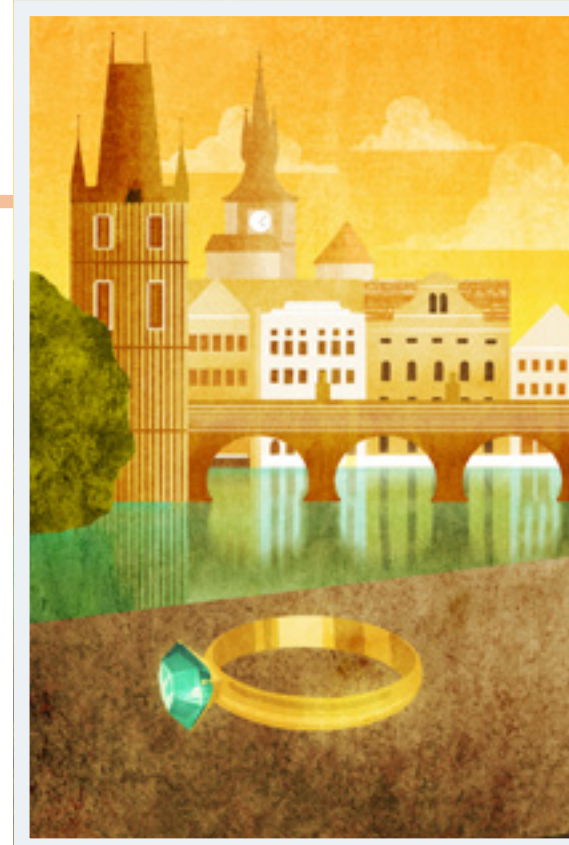
The ring is shown here in the Golden City, as Prague has been called since the Middle Ages, probably because of the many gilded church domes. In the background you can see the Charles Bridge, whose connecting symbolism aptly supports the meaning of the ring in Lenormand.

LOCATION

Charles Bridge, Prague, Czech Republic

KEYWORDS

Relationship, contract, marriage, partnership, bond, obligation, covenant, circle, sphere, commitment, oath, vow, promise, repetition, unity, gold, treasure, jewelry, value, pattern



THE BOOK

26

Secrets and knowledge

The book is first and foremost a cultural product or achievement of human cultural development. For a long time, books have been used to record, preserve and also disseminate knowledge, events or ideas. In earlier times, however, this knowledge was accessible only to certain initiated and educated circles, because the use of a book in this sense presupposes a competence in writing and also an ability to read. Both were not available to the general public for a long time in the past. Therefore, the book is associated not only with knowledge and teaching, but also with mystery and secrecy.

We see the book here in front of the Bodleian Library, the main library of Oxford University. This place, rich in tradition, was founded in 1602 and looks back on an eventful history of knowledge preservation.

LOCATION

Bodleian Library, Oxford, England

KEYWORDS

Secret, unknown, hidden, hiding place, confidential, learned knowledge, library, history, memory, remembrance, insight, expert, culture, education, reading, literature, author, conservation, casket



THE LETTER

27

Communication and information

The letter is a symbol that has represented communication for a long time to people of all cultures and ages. Simply viewed, a letter is an information recorded on paper, usually containing a personal message. In Lenormand, however, the meaning of this card goes beyond that and represents any form of communication, be it a personal conversation, a phone call or an email. The letter in Lenormand symbolism does not convey some superficial or meaningless information, it is always something personal or at least something that is of some importance to the recipient. Pictured in front of the Rialto Bridge in Venice, this card shows a dove flying away with a letter, which is meant to illustrate the nature of an information that once put into the world cannot be brought back and undone.

LOCATION

Rialto Bridge, Venice, Italy

KEYWORDS

Communication, information, message, correspondence, written, news, telephone, conversation, letter, email, document, paper, diagnosis, short term, communicative



THE MAN

28

Male questioner

The cards with numbers 28 and 29 have a special meaning in Lenormand. Man and Woman are primarily person cards and represent the answer seeking person with his or her partner. If the questioner is a man, then he is symbolized by this card. If the person asking the question is a woman, then this card represents the partner of the questioner.

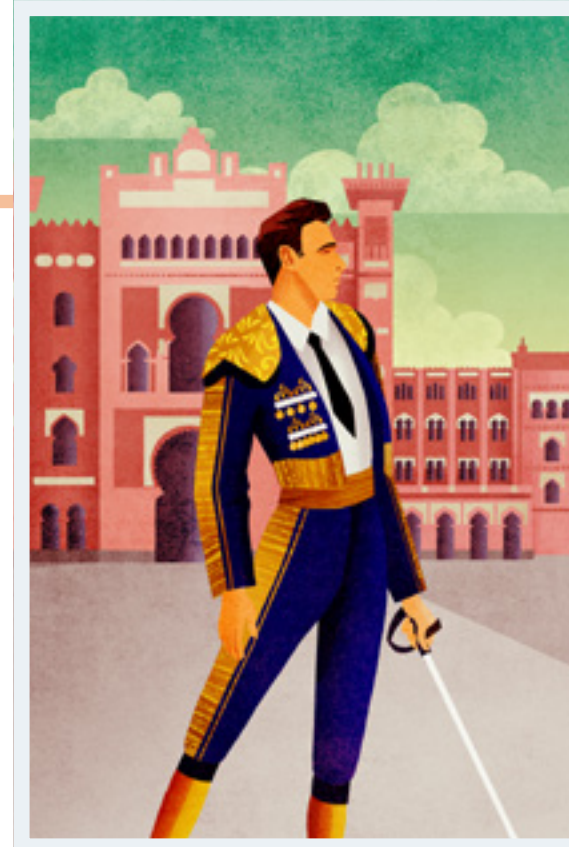
Card 28 also symbolizes masculinity or the male principle, represented here by a torrero in front of the largest bullring in Spain. The underlying symbolism of bullfighting in relation to the role of men and the idea of masculinity in society, allow a wealth of different interpretations, which can go beyond the meaning as a person card.

LOCATION

Las Ventas, Plaza de Toros, Madrid, Spain

KEYWORDS

Male questioner or partner of the female questioner, man, masculinity, male principle, activity



THE WOMAN

29

Female questioner

The cards with numbers 28 and 29 have a special meaning in Lenormand. Man and Woman are primarily person cards and represent the answer seeking person with his or her partner. If the questioner is a woman, then she is symbolized by this card. If the person asking the question is a man, then this card represents the questioner's partner.

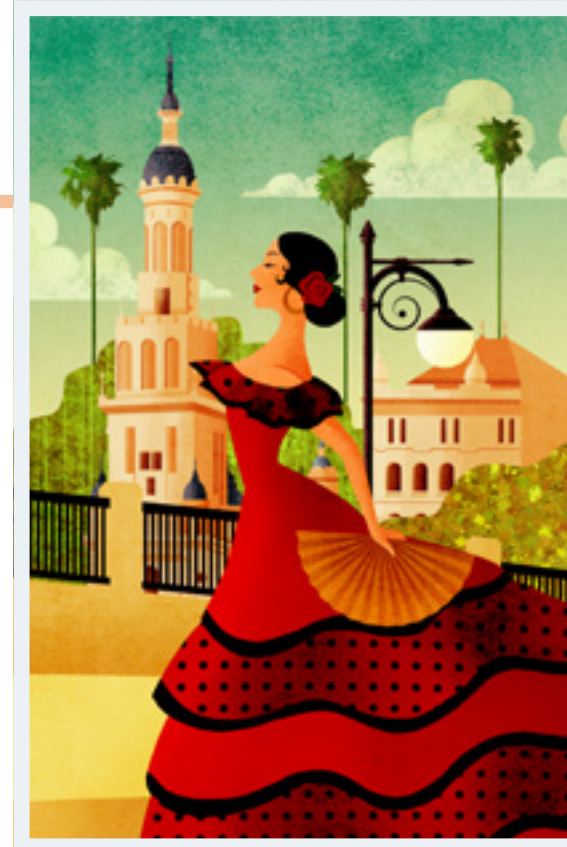
Card 29 also symbolizes femininity or the female principle, represented here by a flamenco dancer in front of the cityscape of Seville in Spain. The dancer is surrounded by an aura of proud elegance and self-confident femininity. Just as with the image of masculinity in bullfighting, the underlying symbolism of the Flamenco dance allows for a wealth of different interpretations in relation to the expression of femininity.

LOCATION

Sevilla, Spain

KEYWORDS

Female questioner or partner of the male questioner, woman, femininity, female principle, passivity



THE LILIES

30

Sexuality and intimacy

In Greek mythology, the lily is associated with Hera, the guardian of marital sexuality, who was also worshipped in many places as the goddess of childbirth. According to legend, the lilies were formed from a few spilled drops of milk from her breasts when Heracles drank from them. Lilies come in many colors, but in Christian symbolism, primarily the white lily plays a role mainly as a sign of peace, grace, purity and virginity. On a more secular level, the lily was also used as a symbol of monarchy and rulership, which can still be found today in many coats of arms of various noble and ruling houses, including the coat of arms of Florence, the city in front of which the lilies are presented here. In Lenormand, the lilies also serve as an activity card, indicating who has to take the initiative, or where to start.

LOCATION

Cathedral Santa Maria del Fiore, Florence, Italy

KEYWORDS

Sexuality, intimacy, initiative, taking initiative, activity, romance, devotion, sexual pleasure, desire, passion, grace, forgiveness, peace, innocence, purity, monarchy, mercy



THE SUN

31

Greatest joy and fortune

The sun, all life on earth depends on it and this outstanding fact was known to mankind from earliest time. The sun represents the energetic source of all life. It stands for energy, light, warmth and pure joy of life. The light of the sun makes things visible, therefore it also stands for awareness, alertness, truth and justice.

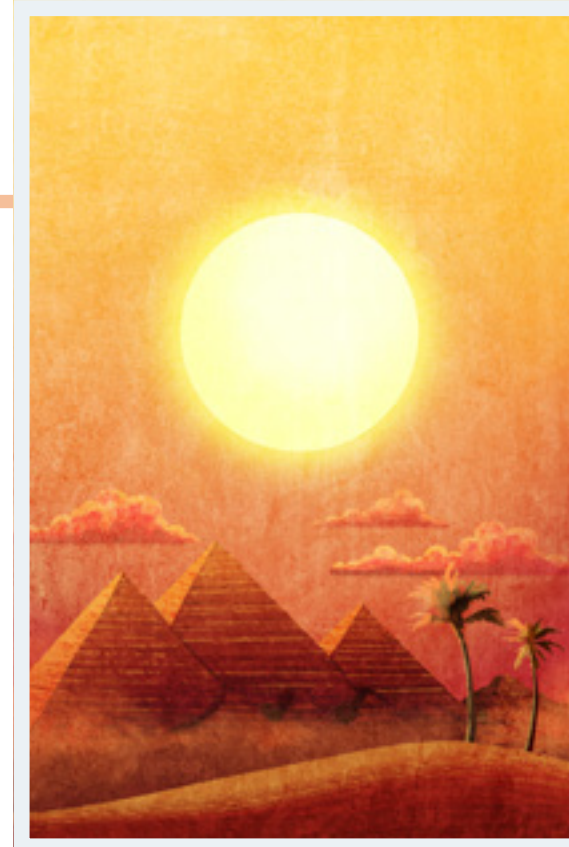
The glistening sun can be seen here in Egypt against the backdrop of the pyramids of Giza. In ancient Egyptian mythology, the sun god Re was the highest of all gods and creator of all existence. He was the sustainer and ruler of the created world. Whoever wants to enter his temple must be pure above all, physically as well as spiritually and mentally.

LOCATION

Pyramids of Giza, Egypt

KEYWORDS

Greatest joy, fortune, zest for life, happiness, joie de vivre, energy, warmth, heat, fire, confidence, vitality, creative powers, brightness, light, fulfillment, alertness, optimism, summer, dryness, radiation



THE MOON

32

Psyche and inner workings

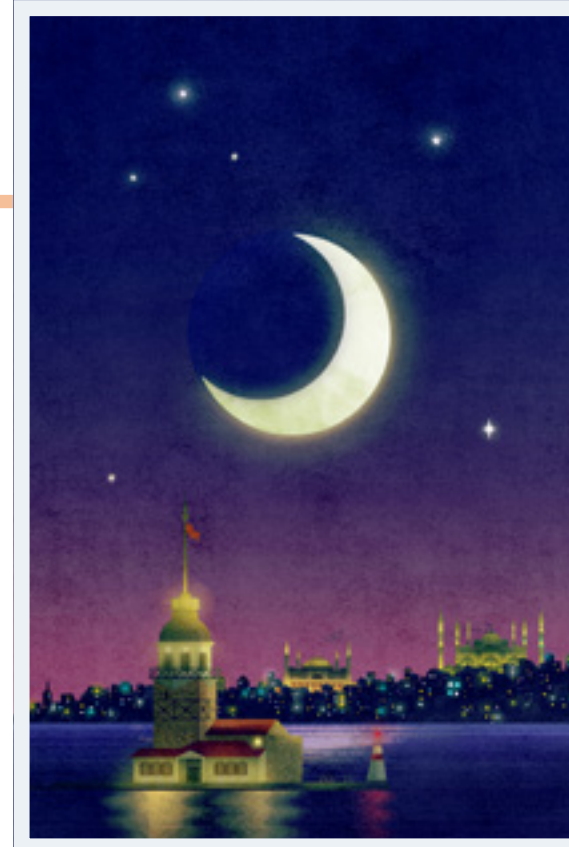
The moon symbolizes primarily the psyche and all the emotions that take place inside, whether consciously or unconsciously. This symbol represents the thoughts and the feelings, but also intuitive perceptions or fantasies. It is always about the inner workings and the subjective side of perception. In addition, the natural properties of the moon also have an influence on its symbolic meaning. On the one hand, it is a symbol for the night and thus for darkness and sleep. On the other hand, it orbits the earth in cycles that are always the same, and through its gravity it affects the tides of the seas and many other natural processes of life. In this way, it represents everything cyclical. Also, the moon has no light source of its own, it merely reflects the sunlight and is thus a symbol for the mirror. It is depicted here in Istanbul with a view of the Blue Mosque and Hagia Sophia.

LOCATION

Istanbul, Turkey

KEYWORDS

Psyche, inner workings, thoughts, introspection, intuition, whims, illusion, fantasy, sensitivity, subjectivity, melancholy, sleep, cold, cycles, rhythm, periodic, mirror, reflection, sentimentality, interior



THE KEY

33

Success and security

As a tool, the key is first of all used to open locks and for this use it can look back on a long tradition of several thousand years. Basically, this symbol always concerns a method of access control, you want to protect something valuable from access by third parties. This aspect of security has also established itself as the most important meaning of this Lenormand symbol. Another facet of the interpretation, closely related to the concept of security, is success. The key allows one to open doors that remain closed to others and puts the owner in an arriviste position. In this way it symbolizes success, but also the intention behind something. This card indicates what is important.

On this card the richly decorated golden key is shown in front of a half-open gate with a view of the city of Marrakech, which is one of the four royal cities of Morocco.

LOCATION

Marrakech, Morocco

KEYWORDS

Success, security, certainty, fulfillment, access, conclusion, clue, solution, door opener, key element, reason, objectivity, logic, problem solving, opportunities, career, music, cryptography



THE FISH

34

Finances and feelings

In many cultures, the fish has acquired a meaning as a fertility symbol due to its strong reproduction and it generally stands for abundance. In Chinese, the word “fish” even sounds synonymous with the word “wealth”. For many people it represents wealth and prosperity, which has also found its way into the symbolism of Lenormand. Quite simply, however, fish are animals that live in water, so this element also finds its place in the interpretation of this card. As a symbol, water always represents the emotions and so we can also associate this concept with the fish. Depicted on this card is a Caribbean island, which here symbolically represents the Bahamas, a place with a long tradition as a financial center, a destination for money flows of various kinds and also as a refuge for wealthy people with the intention of securing financial freedom and independence.

LOCATION

Bahamas, Caribbean

KEYWORDS

Finances, money, possession, wealth, investment, payment, feelings, flow, baptism, purification, individuality, discretion, silence, alcohol, addiction, water, aquatic animals, underwater, below the surface



THE ANCHOR

35

Work and profession

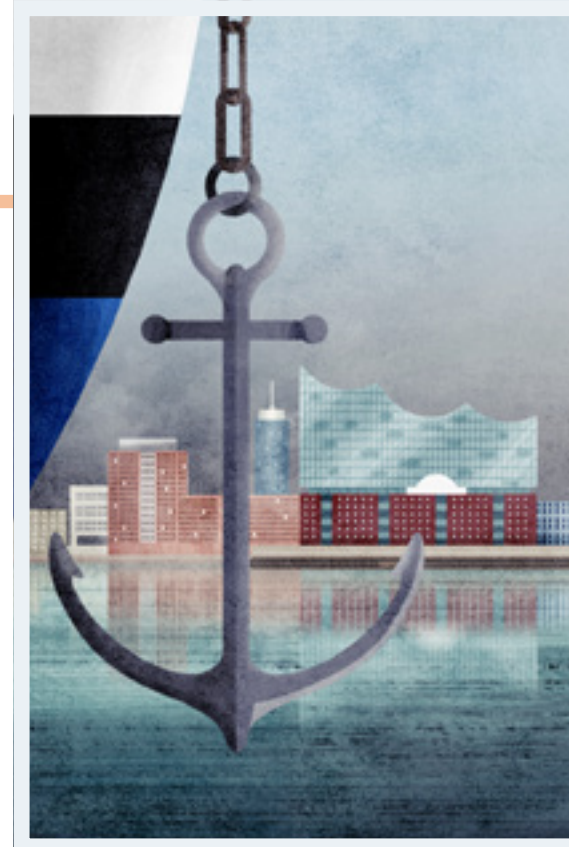
An anchor is a device, normally made of metal and used to secure a vessel to the bed of a body of water to prevent the craft from drifting and make their position insensitive to wind, currents or waves. In this way, a ship is able to hold its position against external influences. This property of the anchor is also what gives the symbol its meaning in Lenormand. In the broadest sense it is about holding on to people, objects or even ideas and the stability of a position. Additionally the anchor is used in Lenormand as a signifier for work and profession, because this is an essential factor in life, which gives people support and stability. Here the anchor is depicted in the port of Hamburg, with a view of the Elbphilharmonie, which can certainly be considered a major cultural monument and thus give this card an additional facet of interpretation as a symbol of culture.

LOCATION

Hamburg, Germany

KEYWORDS

Work, profession, occupation, job, assignment, manifestation, support, dependence, fixation, anchoring, hold on to, cling to, hold, comfort zone, stability, hope, hobby, culture, gain a foothold, commit, bent, cramp



THE CROSS

36

Fate and faith

Worldwide, this symbol has a religious significance, and not only in Christianity. Already from the Stone Age the cultic use of this symbol is known and even pre-Christian religions have used the cross as an expression of their belief in a higher power. Thus, in Lenormand, the cross represents first and foremost faith and religion. Closely connected with the religious interpretation is also the concept of fate. The belief in a higher power usually includes the conviction that the fate of man is guided or at least influenced by this power. The card of the cross always includes the idea of a certain predestination of events.

Pictured here is the Crux Vaticana against the backdrop of the Vatican and St. Peter's Basilica in particular.

LOCATION

Basilika Sankt Peter, Vatican, Rome, Italy

KEYWORDS

Fate, destiny, faith, life task, karma, world view, religion, burden, sacrifice, plus, synthesis, reinforcement, amplification, union of opposites, middle, averaging, in addition, adding something



**The MIAMONDO
LENORMAND
card deck is
available for
purchase at Etsy:**

[kartenorakel.shop/etsy](https://www.kartenorakel.shop/etsy)

Miamondo Lenormand

Author: Patrick Scheller

Publisher: Patrick Scheller, Brüder-Busch-Str. 53, 53721 Siegburg,
Germany, www.kartenorakel.com, info@kartenorakel.com

eBook Version: 1.1

Copyright © 2022 Patrick Scheller

All rights reserved. Reproduction, in whole or in part, only with the
written permission of the author..

Deck of cards depicted: Miamondo Lenormand

Concept: Patrick Scheller

Illustration: Julia Flohr

You can find more information about the Miamondo Lenormand on
my website at:

<https://miamondo.cards>

And on the author's blog:

<https://kartenorakel.com>

The information in this eBook is for entertainment purposes only
and is not a substitute for medical, legal or other professional ad-
vice. Any liability of the author or the publisher is excluded.

The background of the entire image is a repeating geometric pattern of triangles in various shades of blue, ranging from light sky blue to dark navy blue. The triangles are arranged in a grid-like fashion, creating a complex, tessellated effect.

MIAMONDO LENORMAND

www.miamondo.cards