


# Mondnacht Lenormand Add-on



MADE BY KARTENORAKEL  
[www.kartenorakel.com](http://www.kartenorakel.com)

# TABLE OF CONTENTS

---

- 03** **The Mondnacht Add-on cards**  
A brief introduction to the Mondnacht Add-on cards
- 04** **The application of the Add-on cards**  
An introduction to possible applications of the Add-on cards
- 07** **The meanings of the symbols**  
An introduction to the basic meanings of Lenormand Add-on symbols
- 45** **Imprint**  
Legal information

# THE MONDNACHT ADD-ON CARDS

The classic Lenormand, originally consisting of 36 cards, is a wonderful tool for card readers. It impresses with an almost endless complexity, but at the same time with an astonishing clarity and simpleness that is unparalleled among the many fortune telling card systems, available today. Nevertheless, even the best card system is not perfect and leaves room for improvement. During the many years, that I have now used the Lenormand, I have noticed some weaknesses in the selection of the symbols, which I hope to improve with this add-on card deck.

On the one hand, many common terms find no adequate and intuitively understandable symbol among the classic 36 Lenormand cards. Adding more cards can introduce perfectly fitting images for many terms and concepts, that are not yet well represented in the Lenormand. That makes reading the cards easier and even more intuitive, because the better each symbol represents a certain term, the more you can feel its meaning, which improves your reading skills drastically.

On the other hand you can also find card meanings within the classic 36 cards, that could at best be described as contradictory. When you look at the mice for example, you can see that they mainly represent loss and deficiency. But they also stand for nutrition and nourishment. Both terms can hardly be brought into alignment in one symbol. They contradict each other and as a consequence, it can create confusion in the mind of the card reader.

Apart from the many inconsistencies, the restriction to 36 symbols also causes some cards to be overloaded with a large number of very different meanings. That often makes it difficult to really see a differentiated view of the situation in a card reading, because you can only use one of the meanings per card at a time. By introducing new symbols in the context of an add-on card deck, it is now possible to resolve many of the contradictions and shortcomings, while at the same time simplifying the reading of the symbols, allowing more complex answers and making the whole process more intuitive.

The creation of the add-on cards was based on the traditional principles of the Lenormand cards, meaning that the symbols were chosen from everyday objects or animals, that the reader knows and has an intuitive knowledge of. This makes the use of these additional cards easy to learn and easy to apply.

# THE APPLICATION OF THE ADD-ON CARDS

There are several different ways of using the add-on cards, but the classic rules of reading the Lenormand still apply unchanged. The only difference is, that you now have 70 symbols instead of 36 and that brings a few changes in how to spread the cards.

Firstly, it is of course possible to consider the 34 add-on cards as an independent card deck. In this sense, card symbols could be read and interpreted without the inclusion of the classic Lenormand symbols. In this case the two exchange cards 28 and 29 can be added, so that a card representing the questioner exists, and you can then read the cards in the same way you would with a classic Lenormand deck.

It is also possible to understand the add-on cards merely as supplementary information to the original symbols and, for example, to draw individual cards from the add-on deck as needed when laying out the Grand Tableau with the classic symbols. These additional cards can then illuminate specific aspects of the query and provide deeper insights for the seeker.

**However, my recommendation for using this deck is to mix the 34 additional cards with the 36 classic Lenormand cards to form a deck of 70 cards.**

With this expanded set of symbols, you can conduct your card readings as usual. For example, lay out the Celtic Cross or the Grand Tableau in the same way as always and interpret the cards in the usual manner.

When used in smaller layouts, like the Celtic Cross or the Nine-Card Spread, the inclusion of the add-on cards does not change the interpretation technique. You read the cards as usual, only now you must consider the meanings of the new symbols, thus having a more differentiated repertoire of expressive possibilities at your disposal.

However, if you lay out the Grand Tableau in the 8×4+4 or 9×4 variant, you are faced with the special case that, compared to the classic variant with all 36 available cards, only 36 out of 70 possible cards are used in the spread. This results in some peculiarities, which I would like to explain next.

## Peculiarities in laying out the Grand Tableau

The fact that not all available cards are laid out offers the significant advantage that symbols irrelevant to answering a question do not have to appear in the spread, or that the absence of a symbol can represent an additional level of interpretation.

For example, the absence of negative symbols like the Coffin, Scythe, and Fox can be understood as reinforcing the positive statement of a card spread. Likewise, the lack of the Sun, Clover, and Flowers can emphasize negativity. Being aware that certain cards were not laid out and asking why this was the case can enhance the expressiveness of the cards.

Fundamentally, however the cards fall, there is always a reason why they fall the way they do. This also applies to the special case that possibly the card for the questioner or her partner does not appear in the laid out cards. This too is possible with this way of laying out the Grand Tableau.

A reason for this could be, for example, that the seeker does not want to face the problem and possibly hides from the answer. Maybe she is simply not part of the answer, in the sense that she cannot influence the situation, or at least feels as if she cannot. There are many possible interpretations here, depending on the particular situation, which would not have been possible in the classic form with 36 cards.

However, if you do not want to do without the presence of certain symbols, you always have the option to take out these cards before shuffling. This could apply, for example, to certain person cards, or to symbols that you want to assign a specific meaning to beforehand. After taking out the symbols that you want to see in the spread for sure, you then draw the rest of the cards to reach the full number of 36 again. Shuffle these 36 cards a second time and then lay them out as usual for the Grand Tableau. This way, you can ensure that certain symbols are present.

## The meaning of the houses

If you lay out only 36 of the 70 cards, you work only with the first 36 houses. In this case, cards 37 to 70 are, so to speak, homeless, and you can use the house positions as you have previously done with the classic 36 Lenormand cards.

For example, if the Chest with number 61 falls into the fifth position of the Grand Tableau, it lies in the house of the Tree and can be interpreted according to the Chest/Tree combination. This works just like you have used the houses before. In this case, the Chest could stand for “preserving health.”

Houses also play an important role when, for example, the main person and their partner, the cards 28 and 29, do not appear in the card spread. Even if this, as described above, has a reason and represents a statement in itself, it is important to be able to establish a reference point to other cards for these two cards. This is done in this case via the houses 28 and 29.

The same applies to cases where an important significator card does not appear in the spread. For instance, if the question is about a relationship problem and the Ring is not laid out, there’s an important reason for that, but the house of the Ring is still needed to establish a thematic connection to other cards.

## The Extra Large Tableau with 70 cards

Lastly, laying out all 70 cards is also possible. This requires a sufficiently large table and some patience, as gaining an overview here is more difficult than with 36 cards. However, surprisingly, interpreting this “Extra Large Tableau” is not necessarily much more time-consuming than the regular Grand Tableau.

I recommend laying the cards out in a system of 7 rows of 10 cards each. This creates a symmetrical form and, by adhering to the decimal system, makes it relatively easy to find the house numbers by counting the rows of tens.

A significant advantage of this Extra Large Tableau is that all cards find a home again, i.e., you can work with all 70 houses and apply the house system as usual. However, it quickly becomes apparent that interpreting the Extra Large Tableau will be easier for you the better you have memorized the meanings and house numbers of the new symbols.

## Using the replacement cards

The replacement cards numbered 28 and 29 are intended for use in card readings where the querent is in a same-sex partnership. For this purpose, one of the two original cards is simply exchanged with the new replacement card, so that you either get two male cards or two female ones.

# THE MEANINGS OF THE SYMBOLS

On the following pages I will introduce you to the Add-on card symbols. Just like with the classic Lenormand cards, each individual card can embody a multitude of different meanings that go far beyond the basic interpretations described here. Which statement applies in each case depends on the question being asked, the overall context of the card reading, and also on your own intuition. Finding out what a symbol exactly means for you personally, is an important part of the learning process in becoming an expert card reader. No one can do that for you, it is a path you have to take all by yourself.

# THE WATCH

## 37

*Time and the flow of time*

In its most basic function, the clock is a more or less complicated instrument for measuring time. They have been around since ancient times in the form of a sundial, and technical developments over the centuries have led to increasingly complicated and precise measuring instruments. From the hourglass, to the pocket watch, to the extremely precise atomic clock, they are still used today to determine a point in time or measure a period of time.

Due to its inherent function, a clock is intuitively understood by everyone as a universal symbol of time, which is also the primary meaning of this card. The clock may generally indicate that time is a crucial factor, or in combination with other cards, it might specify a particular time.

Additionally, this card can serve as a reminder of the brevity of the time available to us. In this sense, it can also be interpreted as a symbol of certain time pressure.

### KEYWORDS

Moment, duration, period, measurement, flow of time, planning, sequence, causality, one after the other, time dependency, time-bound, time-critical, precision, calendar, appointment, deadline, control, time pressure, punctuality, coordination, synchronization



# THE TOP HAT

## 38

*Elegance and nobility*

The top hat, a tall, stiff, typically black hat with a cylindrical crown and a solid brim, is a sophisticated, elite piece of headwear usually worn on formal occasions. In this sense, it primarily symbolizes elegance and may hint at a celebratory event.

However, the interpretation of the top hat as a symbol of magic arts is also intriguing. The phrase “pulling something out of a hat,” referring to a magician’s trick of unexpectedly producing i.e. a rabbit from a top hat, is well-known. It essentially means presenting a solution that no one anticipated, a surprising twist, or an inexplicable observation.

Moreover, the top hat continues to be seen as a symbol of luck, likely due to its association with the profession of chimney sweeps, who are traditionally thought to avert the danger of fire.

### KEYWORDS

Elegance, nobility, dignified behavior, posture, pride, elite, privileges, social ascent, ceremonial occasion, magic, unusual, unexplainable, something no one expected, headwear, cylindrical object, surprising twist, chimney sweep



# THE CHAMELEON

## 39

### *Adaptation and conformity*

The chameleon is chiefly known for its ability to change color, allowing it to perfectly adapt to its surroundings. This characteristic is used not only for camouflage but also as an expression of its mood. For example, male chameleons often display bright, shimmering colors when in love, attempting to impress the female. When afraid, many species change their color to black, and when aggressive, they turn red.

Another interesting trait of these reptiles is their protruding eyeballs, which can rotate independently in all directions. This allows chameleons to keep a near-360-degree watch on their surroundings.

In the context of card symbolism, many of the chameleon's characteristics are perfectly applicable. But within the Lenormand interpretation system, it primarily represents the concept of adaptability and the ability to change in response to the environment.

### **KEYWORDS**

Adaptability, adaptation to the environment, conformity, inconspicuousness, alignment, keeping an eye on the surroundings, camouflage, not attracting attention, inconstancy, changing luck, appropriateness, expressing emotions



# THE CAT

## 40

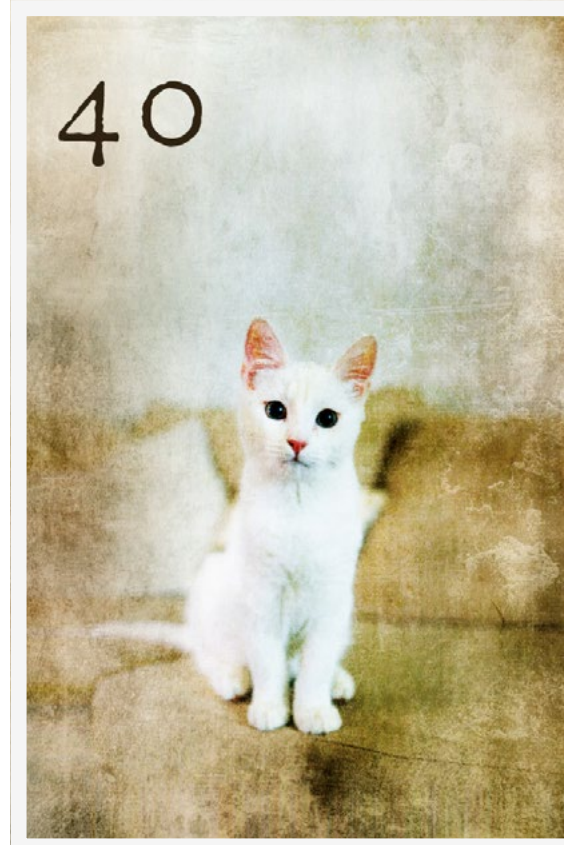
### *Independence and self-will*

The cat, firstly, is a domesticated animal that has evolved to co-exist with humans, tolerating them as companions despite its solitary nature. However, unlike dogs, cats have never been bred to perform specific tasks for humans. In this sense, cats have always maintained their willfulness and independence. Similarly, this card characterizes the trait of not subjugating oneself and asserting one's will. It expresses a certain resistance to hierarchies.

Closely linked to the cat's mental independence and self-confidence is its unpredictability. Every cat owner is familiar with the situation where a cat may allow petting and cuddling one moment and then suddenly lash out with its sharp claws the next. However, tenderness and affection are also attributes closely associated with the cat.

### **KEYWORDS**

Independence, self-will, resistance to hierarchies, self-confidence, sovereignty, loner, individualist, nonconformity, autonomy, tenderness, cuddling, affection, unpredictability, territoriality, instinct, friendship, sneaking up, approaching something unnoticed



# THE BUDDHA

## 41

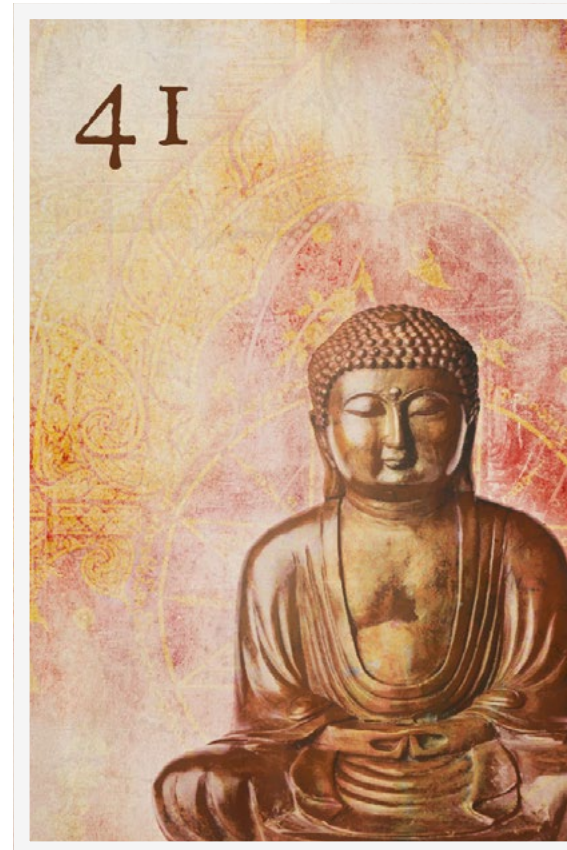
*Mindfulness and inner contemplation*

Though rooted in Buddhism, the teachings and ideals of Buddha are universal and can be appreciated by people of various faiths and cultural backgrounds. As a symbol of spirituality, he represents the pursuit of a more fulfilling, meaningful life and inner peace, transcending religious and cultural boundaries. This card particularly signifies mindfulness, awareness, and serenity. It may also represent introspection and meditation. Additionally, it serves as a reminder to be conscious of the power of one's thoughts, suggesting that reality is shaped by these thoughts.

Furthermore, the card emphasizes questioning and understanding circumstances independently. It embodies self-responsibility and the rejection of blind adherence to authority. Buddha gained his understanding of the nature of all things not through divine revelation but through meditative insight. In this sense, the card advises relying on one's own insights rather than following external authority.

### KEYWORDS

Awareness, self-observation, self-responsibility, personal growth, questioning things, serenity, inner peace, inner contemplation, meditation, compassion, overcoming suffering, the middle way, concentration, the present moment, Buddhism, clarity, ethics, morality



# THE EYE

## 42

### *Vigilance and perception*

The eye is a fascinating and multifaceted symbol that represents our ability to perceive the world and interact with it. It plays a central role in many fundamental aspects of our lives. As a gateway to the soul and a mirror of our innermost thoughts and emotions, the eye also stands for profound spiritual and philosophical concepts.

The primary significance of the eye as a Lenormand symbol is perception, especially the visual aspect. The eye allows us to perceive the world around us by capturing light and converting it into electrical signals interpreted by the brain. However, each person also sees the world through their own eyes and interprets it in their unique way, shaped by experiences, beliefs, and perspectives. In this sense, the eye symbolizes individual viewpoints and the diversity of human perception.

Additionally, the eye can be viewed as a symbol of foresight and vision.

### **KEYWORDS**

Perspective, viewpoint, vigilance, observation, recognition, keeping in view, forming an image, insight, vision, monitor, foresight, providence, brightness, clairvoyance, nonverbal communication, curiosity



# THE BEE

## 43

*Diligence and cooperation*

One of the fundamental interpretations of this card is diligence. The bee represents this concept like no other creature on Earth. Its remarkable work ethic, tirelessly flying from flower to flower to collect nectar, is exemplary. Bees cover thousands of kilometers in their short lives and work from sunrise to sunset to contribute to the survival of the hive. Their dedication and commitment are unparalleled. The beehive, a blooming, buzzing unit full of activity, symbolizes productive work and the ability to achieve impressive results through constant effort and perseverance.

But it's not just the diligence of the individual that is important in this symbol; in a beehive, each bee must contribute its individual efforts for the good of the entire collective. They communicate efficiently and coordinate their tasks to ensure their survival. This division of labor and the high level of cooperation bees exhibit are a crucial aspect of this symbol.

### KEYWORDS

Community, group organization, teamwork, commitment, cohesion, readiness, endurance, productivity, division of labor, coordination, structure, order, efficiency, discipline, sweetness, reward, enjoying the fruits of labor, common good, insects, hexagon



# THE ANGEL

## 44

*Spiritual world, protection and guidance*

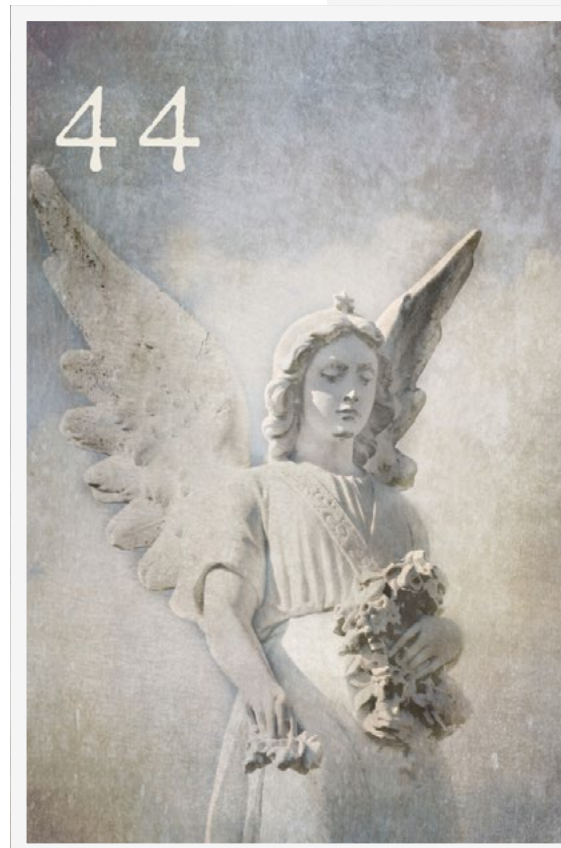
Angels have been present in many cultures and religions for millennia, often viewed as messengers of the divine, protectors, and connectors between the earthly and heavenly realms. They symbolize a wealth of concepts and emotions deeply embedded in the human psyche.

The most fundamental interpretation of this card is, of course, spirituality, particularly communication with the spiritual world. Angels often act as intermediaries between the spiritual and physical worlds. They are messengers who deliver communications from higher realms and often appear in moments when we seek answers.

Another important meaning is protection and guidance. Guardian angels are for many a deep and sincere anchor of faith, offering support and assistance in challenging times. They are seen as a source of guidance and wisdom, showing the right path through life's labyrinth and providing invisible signs for crucial decisions.

### KEYWORDS

Hope, comfort, pure intentions, sincerity, innocence, heavenly intervention, spiritual message, messenger of God, connection to the divine, higher purpose, prayer, healing, divine inspiration, revelation, selflessness, supernatural experience, guardian, helping hand



# THE SCALES

## 45

*Balance and the right measure*

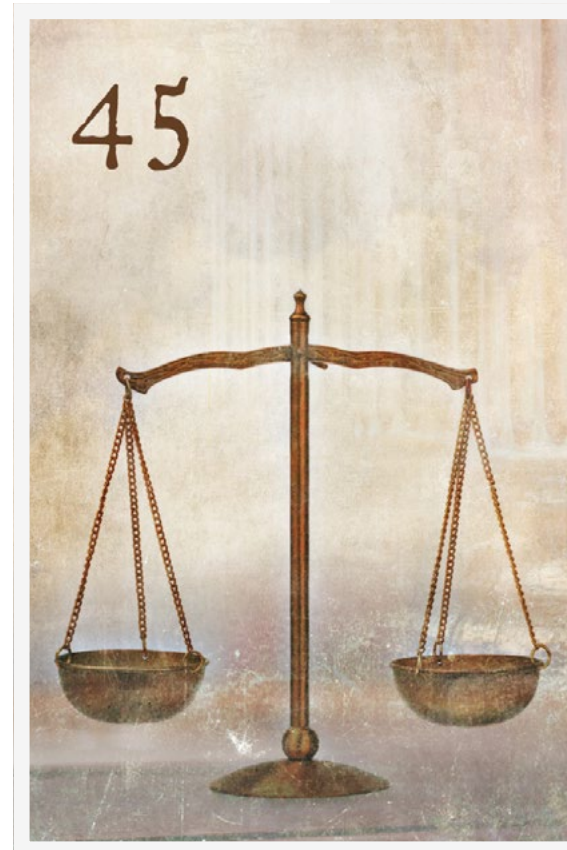
The scale is a symbol that represents judicial authority in many legal systems worldwide. It is prominently featured on court buildings and in legal symbols. The scale symbolizes impartial and fair judgment, where all facts and arguments are carefully weighed before a verdict is rendered. In ancient mythology, the goddess of justice is often depicted holding a scale, present in both Roman (Justitia) and Greek mythology (Themis or Dike).

The scale symbolizes balance, equanimity, and the concept of proper measure. In this sense, it represents justice, wisdom, and truth. It is also a symbol of law and social order, as well as the court as a judicial institution.

Depending on the context, this card can indicate existing balance or suggest finding harmony and equilibrium in various aspects of life. The scale reminds us to carefully examine and evaluate before taking action.

### KEYWORDS

Balance, the right measure, weigh something, justice, fairness, truth, wisdom, law, social order, judiciary, judgment, discernment, assessment, examination, evaluation, weighting, weight, equilibrium, compensation, morality, moderation, compromise, neutrality



# THE BREAD

## 46

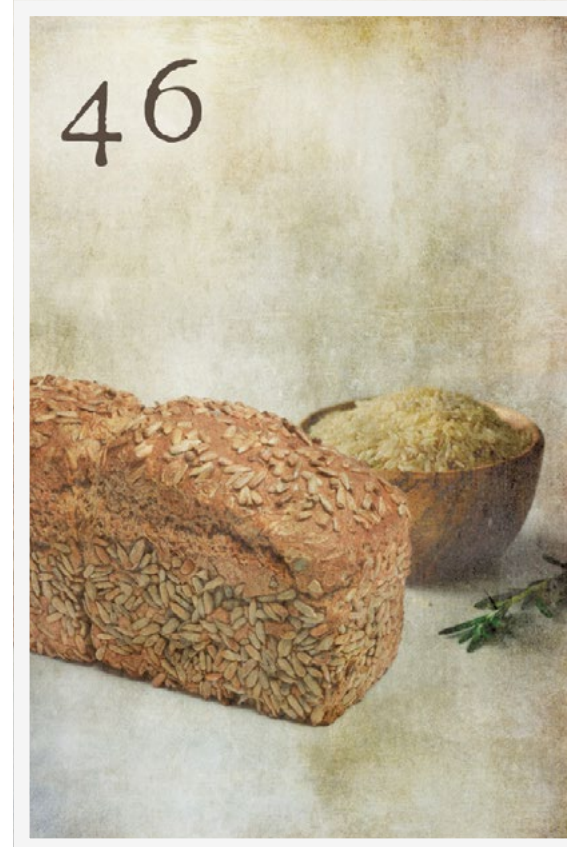
*Nutrition and basic provision*

Bread has always been one of humanity's most fundamental food items and a universal symbol of nourishment and sustenance. As an essential component of daily meals in many cultures, it represents both physical and spiritual nourishment, metaphorically standing for everything that satisfies basic needs and provides for basic sustenance. In human history, bread is closely tied to the development of agriculture and the shift to sedentary lifestyles. It symbolizes the transition from nomadic ways of life to structured societies centered around harvest and communal meals. Thus, bread also signifies community and sharing, the simple act of coming together at the table, which has been a form of social exchange since the dawn of civilization.

In many religions, bread also holds a deeper, ritualistic significance. For instance, in Christianity, bread is part of the Last Supper and is seen as a symbol of the body of Christ. Therefore, it embodies not only the fulfillment of minimal physical needs but also spiritual nourishment.

### KEYWORDS

Nutrition, food, livelihood, sustenance, staple food, meal, basic provision, minimal needs, community, sharing, harvest, simplicity, modesty, hospitality, sacrament, baking craft, flour, grain



# THE MASK

## 47

### *Concealment and masking*

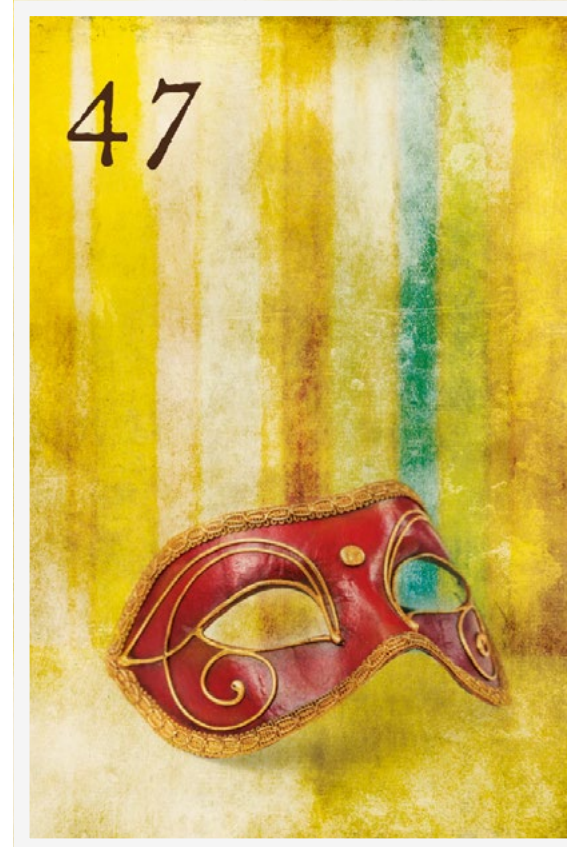
The mask is an object of profound significance, concealing the face and acting as a veil between the individual and the outside world. Originally used in rituals and ceremonies, it can represent both protection and concealment. It allows the wearer to hide their true identity and maintain anonymity.

In the theater, the mask is a fundamental element that enables actors to assume various characters and express a multitude of emotions and personalities. This practice highlights the ambiguity of the mask – it not only conceals but also reveals hidden facets of a character or performer.

Furthermore, the mask can be seen as a symbol of societal expectations. It reflects the often-present necessity to disguise oneself to conform to social norms or to gain social acceptance in certain situations.

### **KEYWORDS**

Face covering, veiling, concealment, secrecy, anonymity, masking, impersonation, expectations, role-playing, theater, performance, fashion, expression, ambiguity, ritual, ceremony, protection



# THE BUTTERFLY

## 48

*Inner transformative power and liberation*

The butterfly undergoes a transformative process, evolving from a rather unattractive caterpillar, through the stage of pupation, into a beautiful, ethereal being that can freely soar through the air towards the sun.

In this sense, the butterfly symbolizes the power of inner transformation from being bound to the material world to achieving freedom and liberation from previous states. This liberation can be interpreted spiritually as enlightenment or detachment from worldly ties.

With its delicate beauty and the uniqueness of each wing pattern, the butterfly also represents individuality and the recognition of the uniqueness of every life journey. It reminds us that overcoming materialism and striving for transcendence are not only desirable but also attainable.

### KEYWORDS

Inner transformative power, process of development, ease, lightheartedness, liberation, freedom, redemption, transformation, spiritual journey, beauty, uniqueness, individuality, overcoming materialism, transcendence, non-attachment, self-realization



# THE VINE

## 49

*Enjoyment and sensual pleasures*

For millennia, wine has been associated with pleasure and the sensual joys of life. A fine wine signifies not just taste on the tongue but embodies sensuality and the joy of living, unfolding on the palate. It is a celebration of the pleasant aspects of life and an ode to sociability, often finding its true expression in the sharing of a glass of wine.

Wine's role in relaxation and in shedding the worries of everyday life is recognized across cultures. A sip can act like a gentle key, unlocking the doors to a sensory euphoria where the pursuit of pleasure finds its space. In this regard, wine is also associated with the art of living, which involves enjoying life to the fullest and savoring the moment.

While this card is mainly associated with positive connotations like enjoyment and community, it can also symbolize the darker aspects of alcoholism and loss of control.

### KEYWORDS

Pleasure, sensual delights, sensuality, joy of life, the good life, sociability, relaxation, letting go of everyday worries, sensory exhilaration, euphoria, seeking pleasure, art of living, hedonism, prosperity, luxury, gourmet, alcohol, intoxication, flavors



# THE PIGEON

## 50

*Gentleness and peace*

The dove, with its gentle cooing and soft feathers, has long embodied the ideals of gentleness and mildness. Its simple appearance and peaceful behavior symbolize modesty and softness, making it a universal sign of peacefulness.

Its tameness and docility remind us that harmony and trust are fundamental pillars for peaceful coexistence. The dove's white color enhances the image of purity and untouched innocence often associated with it, highlighting its role as a messenger of inner and outer peace. The dove is also a very sociable animal with strong bonds to its partner and nesting site, as well as displaying significant social behavior.

In a spiritual context, the dove is often seen as an embodiment of the Holy Spirit, especially in Christianity, where it is regarded as a celestial being of spiritual purity and divine assistance.

### KEYWORDS

Gentleness, mildness, humility, softness, meekness, innocence, peace, peacefulness, approachability, docility, purity, untainted, social behavior, tenderness, simplicity, spiritual purity, Holy Spirit



# THE TURTLE

## 51

*Deliberation and slowness*

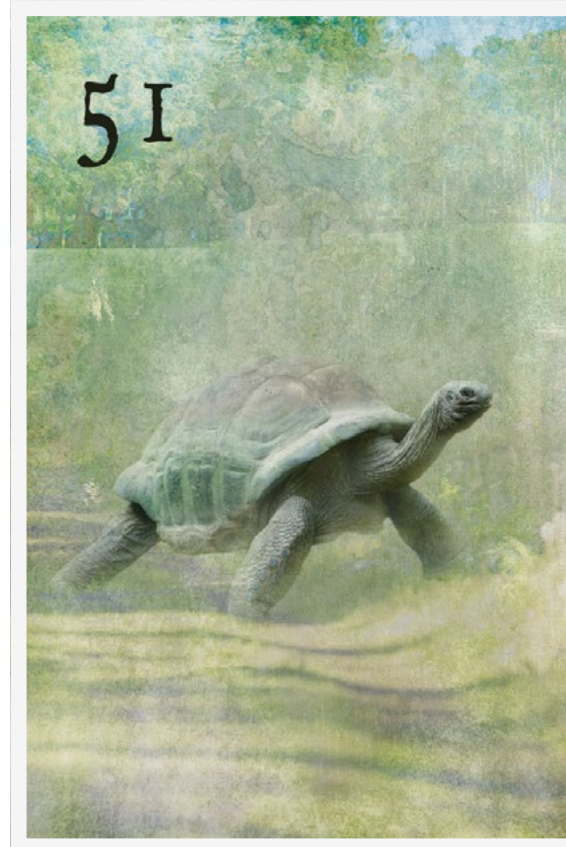
The turtle, known for its slow pace and protective shell, symbolizes deliberation and prudence. Its gradual progress teaches us that it's not speed, but consistent perseverance that leads to success. The turtle reminds us to slow down in a fast-paced world and experience a moment of deceleration.

The turtle's hard shell represents protection and defense against life's adversities. It symbolizes a natural resilience to external factors and conveys the message that true strength often lies in the ability to withdraw and take cover when necessary.

Additionally, its remarkable lifespan makes the turtle a symbol of longevity and endurance.

### KEYWORDS

Deliberation, prudence, slowness, leisureliness, deceleration, retreat, thoughtful action, cover, protection, defense, resistance, resilience, longevity, patience, tolerance, endurance, perseverance, seclusion, frugality, down-to-earthness



# THE THORNS

## 52

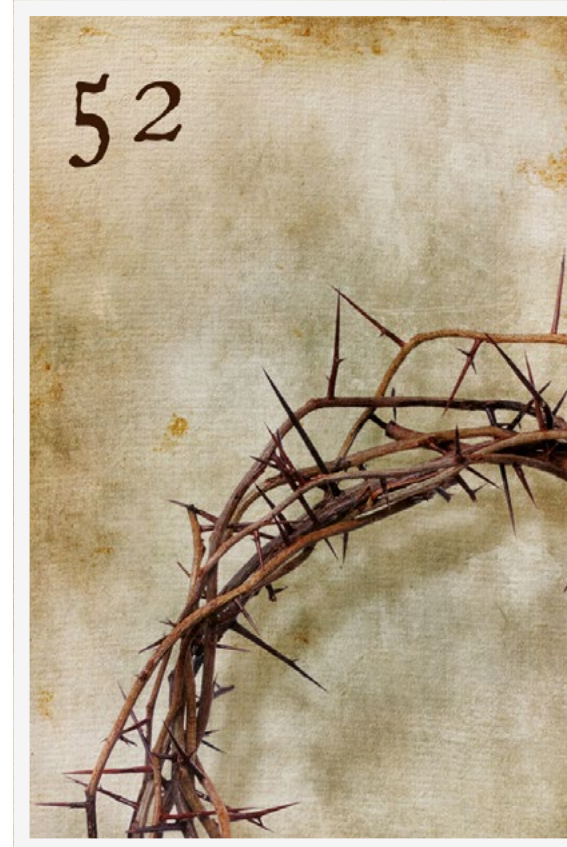
*Injury and unbearable*

Thorns are a profound symbol found in nature and in many cultural narratives. Their association with aridity and the harsh, often inhospitable environments where they thrive reflects the toughness and challenges of life. Thorns represent the difficulties and obstacles that life often presents – they symbolize the struggle through rough terrain and the hardships endured along this path. The connection of thorns with injury is immediate and physically tangible. They serve as a constant reminder of the potential pains associated with overcoming obstacles. Their prickly and repelling nature makes them a symbol of intolerance and inflexibility, conveying a clear message of keeping distance and exercising caution.

In many religious narratives, thorns symbolize the path of suffering and martyrdom. They are often associated with the notion of sacrifice and can be seen as a metaphor for the pain and torment that an individual must endure.

### KEYWORDS

Dryness, injury, to struggle through, unendurable, intolerance, unpleasant, perilous, prickly, path of suffering, martyrdom, torment, agony, hardship, sacrifice, the harshness of life, burden, relentlessness, repellent



# THE EGG

## 53

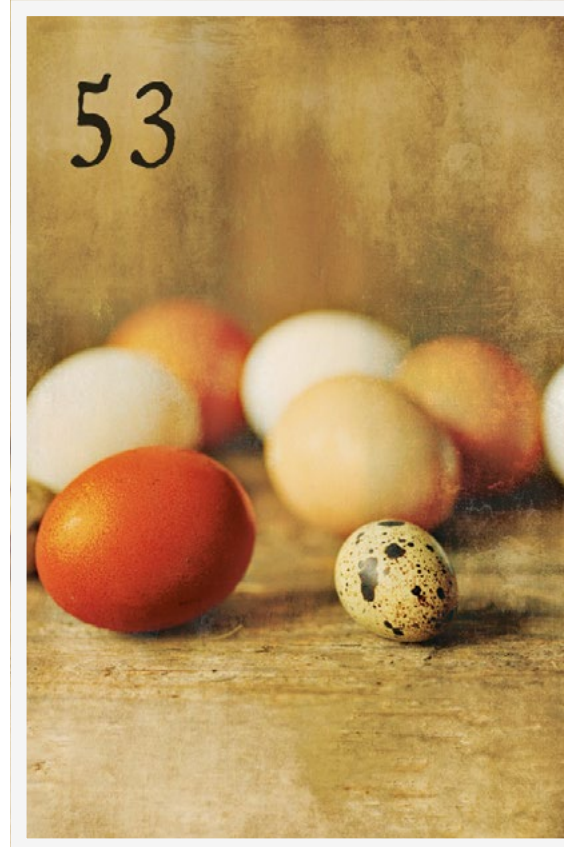
### *Origin and simplicity*

The egg, in its simple yet perfect form, is a profound symbol that plays a significant role in many cultures. It represents the origin and the beginning, a source of life from which everything emerges. In its enclosed form, the egg harbors the secret of the inception of life, originality, and untapped potentiality. It symbolizes the maturation and development that occur in hidden silence until the right moment arrives for hatching and breaking into a new existence. Thus, it also stands for the unrealized potential and innate disposition present in every being, waiting to be discovered and unfolded. It's like a hidden power or ability, awaiting realization at the opportune time.

As a symbol of birth and resurrection, the egg also represents the perpetual return and the cycle of life. It reminds us of the constant flow of coming into being and passing away. Its plain appearance embodies simplicity and the most fundamental, pointing to the basic form and elementary nature of life.

### **KEYWORDS**

Origin, primordial beginning, source, germ of life, primitiveness, birth, resurrection, recurrence, cycle of life, wheel of life, simplicity, the very simplest, basic form, elemental, passivity, waiting, patience, maturation, untapped potential, predisposition



# THE CROWN

## 54

*Claim to authority and elevated significance*

The crown is often seen as the ultimate symbol of royal or imperial power. Worn as a head ornament by monarchs and rulers, it embodies dignity and a regal claim that transcends ordinary human affairs. The crown is not just a physical representation of leadership and power but also a symbol of the commanding position held by a person or an institution. Its elevated significance and importance are evident in the attention and reverence bestowed upon those who wear crowns. It symbolizes superiority and authority in a manner that commands respect and deference.

The command authority associated with the crown reflects a right to rule often perceived as divinely or fatefully ordained. In this sense, the crown represents an authority often considered untouchable and incontrovertible. However, this card also reminds us of the responsibility and burden that come with great power. It is a constant reminder of the duties and leadership expected of those who bear it.

### KEYWORDS

Dignity, imperial claim, leadership, domination, elevated significance, importance, attention, favor, superiority, authority, respect, dignity, imperial power, command, sovereignty, right to rule, fame, nobility, reverence



# THE TRUMPET

## 55

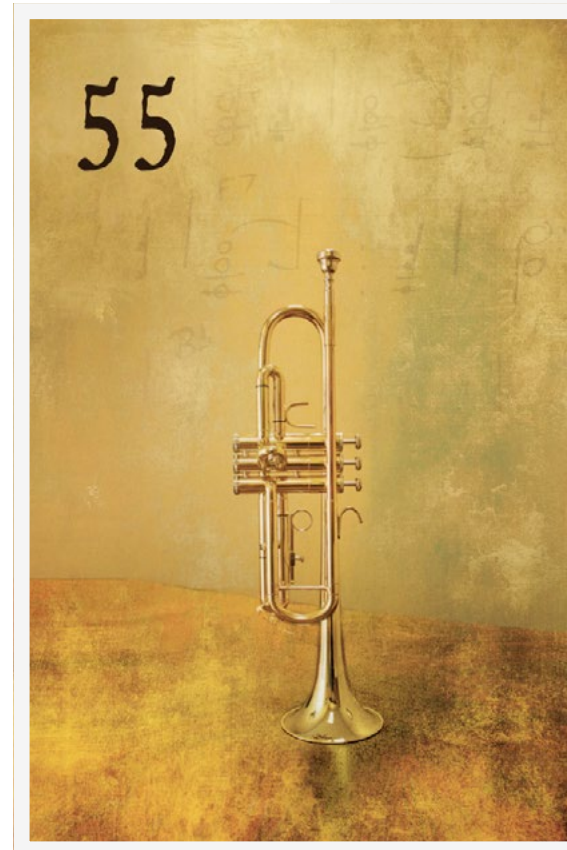
### *Tones and frequencies*

The trumpet is a musical instrument known throughout the centuries for its penetrating sounds and its ability to reach and move people. As an instrument, it produces tones that touch not only the ear but also the soul. Music, serving as a kind of metaphor, helps express the structure and quality of emotions that go far beyond mere spoken words, making the trumpet a symbol of underlying communication. Its loudness and ability to carry frequencies and vibrations over long distances also endow it with significance as a recognition signal. Often, important events are announced through this card.

The trumpet is a powerful symbol of communication and proclamation. It calls people to pay attention and awaken, whether in the metaphorical sense of a spiritual awakening or in the literal sense of waking up to a new day or era. With its resonant echo, it has the power to unite people, convey messages, and draw attention to what is essential.

### **KEYWORDS**

Music, tones, sound, volume, frequencies, vibrations, instrument, subliminal communication, recognition signal, recognize, signaling instrument, instrumentalize something, with great effort, a production, a revelation, announcement, awaken, arouse



# THE COINS

## 56

### *Money and influence*

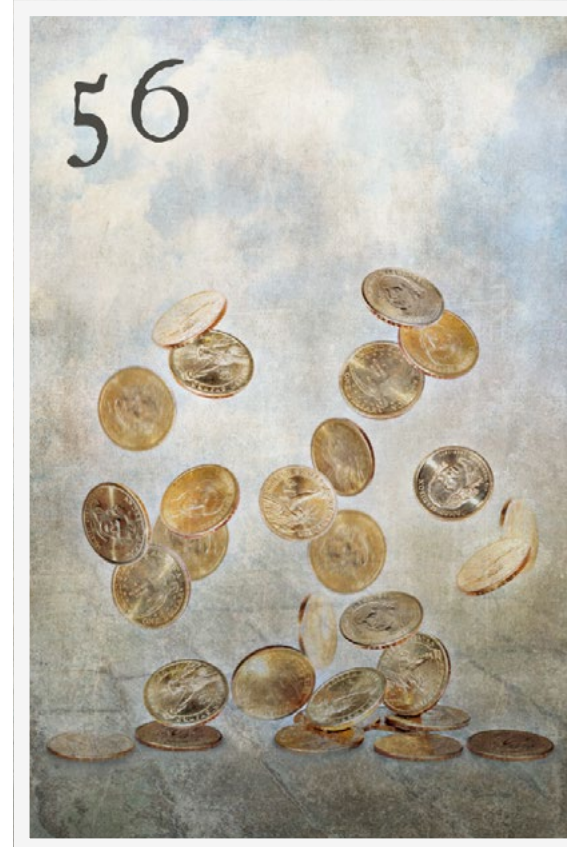
The coin is a universal symbol for money and capital. As a physical representative of cash and currency, the coin is a fundamental element of financial transactions and stands for the exchange of values and goods. In its simple form, it embodies the concept of price and value, whether in terms of calculations and valuations in everyday life or as a measure for larger economic concepts.

The coin also symbolizes influence and wealth. Representing financial resources and material riches, it signifies the power that comes with possessing money and the privileges that often accompany it. In a world governed by money, the coin represents both economic power and personal wealth, highlighting how money can be used for control, status, and achieving privileges and favors.

In the business world, the coin is a fundamental symbol for trade and exchange. It stands for the dynamics of buying and selling, negotiating, and setting prices.

### **KEYWORDS**

Money, cash, capital, financial transactions, currency, price, value, calculation, assessment, influence, wealth, financial resources, material wealth, privileges, economy, control, significance, ownership, privilege, favor, trade, business world, salary



# THE FIRE

## 57

*Warmth and transformative power*

Fire, one of the most fundamental forces of nature, is a symbol with deep and complex meanings. It represents warmth and energy, qualities that can be both life-giving and destructive. As a source of light and a primal force of humanity, fire symbolizes transformative power and change, capable of both reviving and annihilating.

In its role as a means for purification and refinement, fire is seen in many cultural and spiritual traditions as a tool for eliminating impurities or facilitating transformation. This purification can be both physical and metaphorical, burning down old structures to make way for new ones.

Simultaneously, fire symbolizes uncontrollability and loss of control, expressing chaos, ruin, and devastation. These attributes reflect the wild and unpredictable nature of fire, which can quickly shift from a useful force to a destructive power.

### KEYWORDS

Warmth, energy, light, primal force, transformative power, transformation, destruction, purification, cleansing, uncontrollability, loss of control, chaos, ruin, devastation, passion, desire, burning for something, wildness, hearth, power plant, energy source, ignite, spark, impulse, embers



# THE ICE CRYSTAL

## 58

### *Coldness and rigidity*

The ice crystal, with its unique and often fascinating symmetrical shape, symbolizes stagnation and immobility, as seen in the natural process of freezing and solidification. In this sense, the ice crystal also represents preservation, as the cold freezes everything in its current state, conserving it.

Associated with the winter season, the ice crystal stands for coldness and, metaphorically, for related attributes such as ruthlessness and mercilessness. It reminds us of the harsh aspects of nature and life, where emotional detachment and coldness can prevail.

At the same time, the ice crystal embodies fragility and insensitivity. Its delicate, intricate form is a marvel of nature, existing and thriving under extreme conditions despite its fragility. This fragility of the ice crystal symbolizes the delicate balance often present in nature and life.

### KEYWORDS

Rigidity, stagnation, solidification, preservation, winter, coldness, freezing, freeze, virus, mercilessness, cruelty, lovelessness, emotional distance, emotional coldness, stillness, orderly structures, fragility, insensitivity, symmetry, fragility



# THE BOY

## 59

*Novelty and new beginning*

In the Mondnacht Lenormand, the Child card (number 13) is depicted as a girl. The addition of a counterpart card allows for differentiation between a boy and a girl, both representing new beginnings but now incorporating male and female energies. The boy, through the masculine principle, stands for activity, indicating that a new beginning requires initiative. On the other hand, the girl represents a new start that happens passively, without active involvement, suggesting a process of receiving rather than initiating.

Furthermore, the boy can also be seen as an expression of not yet fully developed masculinity. In this context, this card could hint at an ongoing process of maturation or point to untapped potential that lies in exploring and maturing the masculine side of a person, regardless of their gender.

### KEYWORDS

Novelty, new beginning, active fresh start, actively embarking on something new, male child, undeveloped masculinity, childhood, trust, dependence, something small, something new, immaturity, innocence, curiosity, naivety



# THE TUNNEL

## 60

*Transition and access to the hidden*

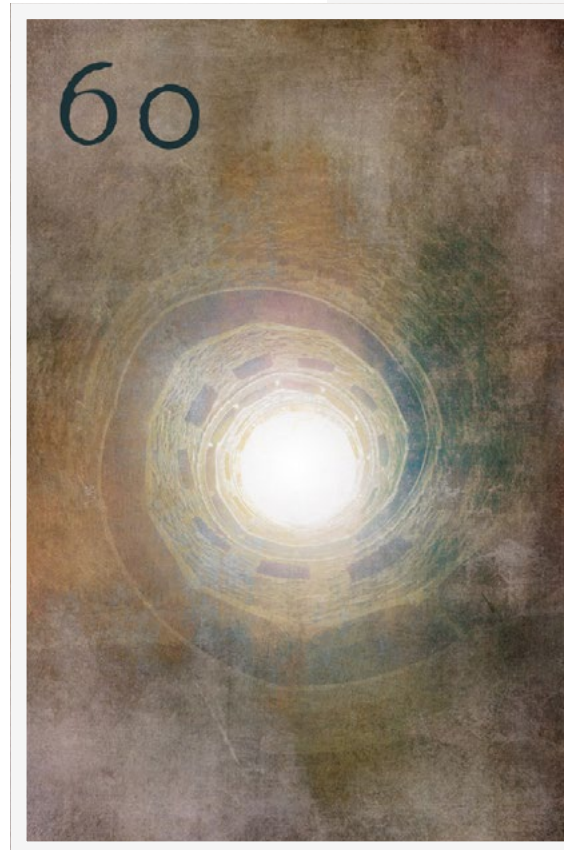
The tunnel, connecting two points separated by difficult or even insurmountable terrain, symbolizes the effortless overcoming of a difficult problem or finding a shortcut to a destination.

This card can also represent access to something hidden, symbolizing the revelation and discovery of things previously obscured in darkness. As a passage, the tunnel conveys the idea of transition—a journey from one place to another or from one phase to the next. In a spiritual context, it can depict access to or transition into the afterlife.

However, in its structure, the tunnel might also symbolize a narrow perspective. The confined walls of the tunnel suggest that certain viewpoints are being overlooked, emphasizing the importance of broadening one's perspective to grasp the bigger picture.

### KEYWORDS

Access to the hidden, revelation, discovery, opening, transition, passage, effortless resolution of a problem, breakthrough, shortcut, direct access, connection, hidden forces, narrow perspective, concealing something, going unnoticed



# THE CHEST

## 61

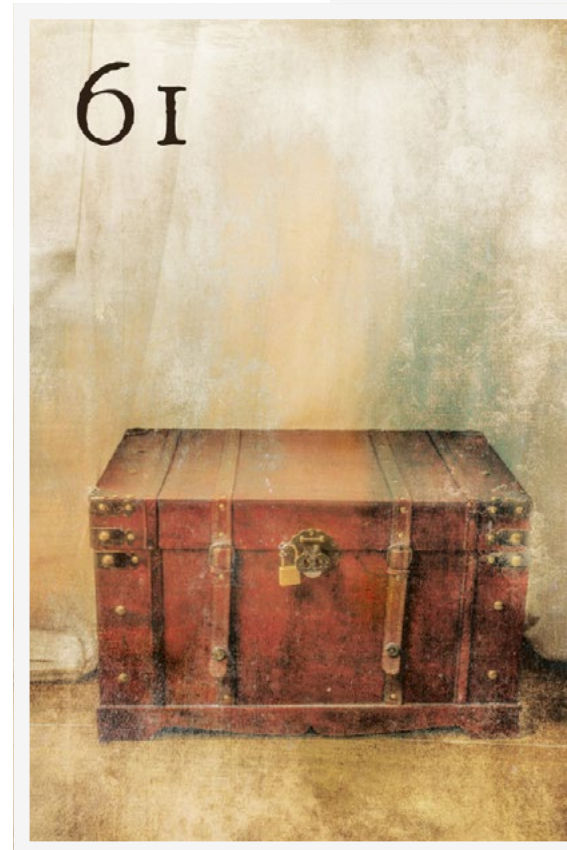
*Preserve and protect*

The chest is a piece of furniture used for storing items of significance or simply for transporting objects. In its function as a casket, box, or even a safe, the chest conveys the idea of enclosure, containment, and preservation. It symbolizes the desire to keep something valuable safe and untouched. The closed nature of the chest can also represent secrets or hidden aspects waiting to be discovered, arousing curiosity about what lies within. Metaphorically, this card can remind us of the importance of passing on knowledge, experiences, and values from generation to generation.

Overall, the chest is primarily a symbol of safeguarding and protecting what is dear to us. It represents the significance of memory, heritage, and tradition. The chest urges us to carefully preserve and protect what we value, while also reminding us that sometimes opening and sharing these treasures is as important as their preservation.

### KEYWORDS

Conservation, preservation, storage, keeping, safeguarding, enclosure, containment, maintenance, protection, guarding against loss, casket, box, safe, piece of furniture, hidden treasure, concealed storage, heritage, tradition preservation



# THE LIGHT BULB

## 62

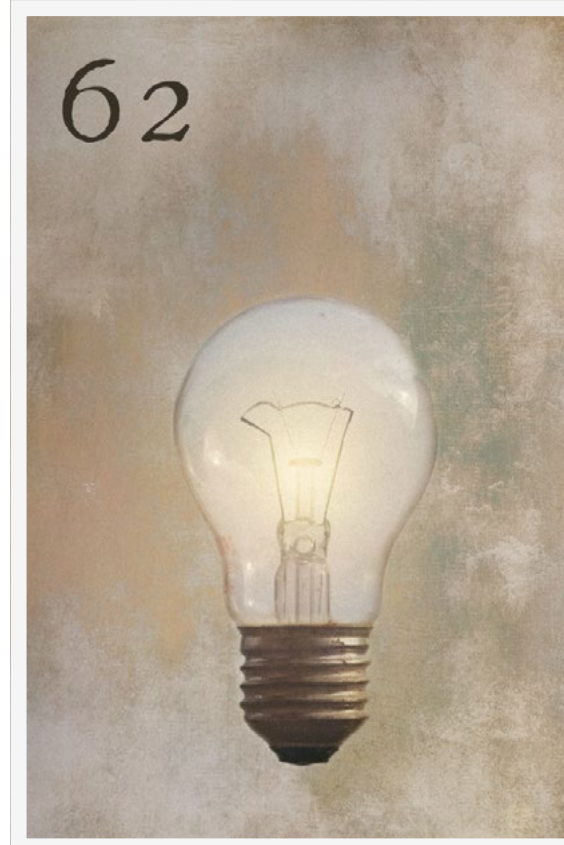
### *Technology and innovation*

The light bulb is a pervasive symbol of modern technology and enlightenment. It represents much more than just artificial lighting. It symbolizes innovation and invention, a testament to the human spirit and its relentless pursuit of progress. In the light bulb, the ideal of humanity's continuous advancement is manifested, symbolized by the simple yet revolutionary idea of illuminating the darkness. As a metaphor for an idea or inspiration, the light bulb represents the moment of an epiphany, the emergence of a new thought or sudden understanding. It is a symbol of insight and intelligence, illuminating situations and uncovering solutions.

In a broader context, the light bulb stands for progress and advancement, symbolizing the future and what may yet come. As an emblem of innovation, it reminds us that every great achievement begins with a single idea and that the pursuit of knowledge and improvement is a continuous process.

### **KEYWORDS**

Technology, knowledge, innovation, invention, guiding principle, idea, inspiration, illuminate something, understand something, insight, intelligence, understanding, solution, progress, progressiveness, future, guiding vision, perspective, enlighten, illuminate, comprehend, role model



# THE PEACOCK

## 63

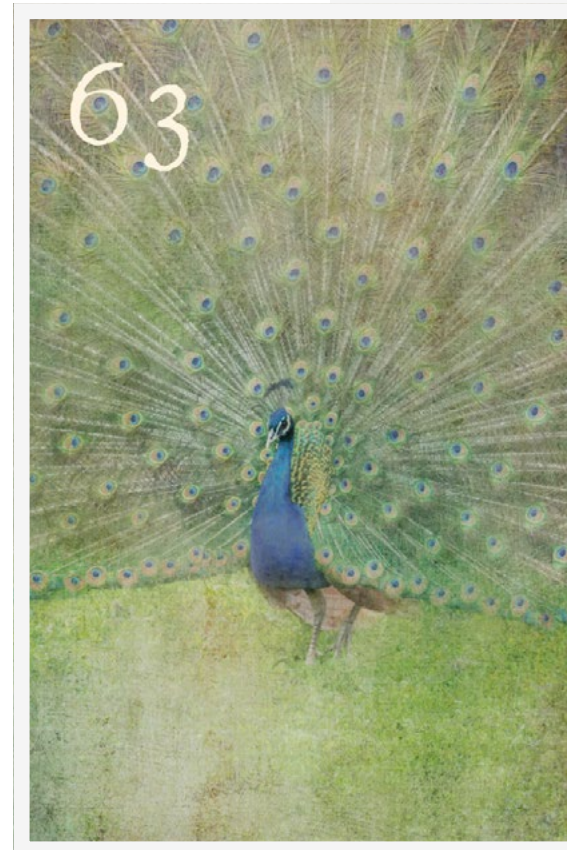
*Beauty and pride*

The peacock, with its splendid plumage and majestic appearance, symbolizes beauty and pride. Its iridescent feathers represent vanity and splendor. In the world of the peacock, it's all about grace, aesthetics, and sublimity. It symbolizes the human desire to attract attention and stand out from the crowd. It embodies the wish to be noticeable and fascinating, as reflected in its extraordinary allure and charisma. The vibrancy and extravagance of the peacock make it a symbol of opulence and exoticism. The peacock stands for the exceptional and extraordinary in nature and life.

However, the focus on the external can also symbolize a neglect of deeper, inner values. Additionally, this card can be perceived as attention-seeking and boastful, indicating a certain arrogance and inaccessibility. Its splendid appearance can be seen as a symbol of exaggerated self-presentation.

### KEYWORDS

Beauty, self-pride, vanity, grandeur, grace, aesthetics, sublimity, self-presentation, being in the spotlight, attracting attention, standing out, fascination, allure, charisma, vibrancy, extravagance, opulence, spectacular, gracefulness, exoticism, self-promotion



# THE BELL

## 64

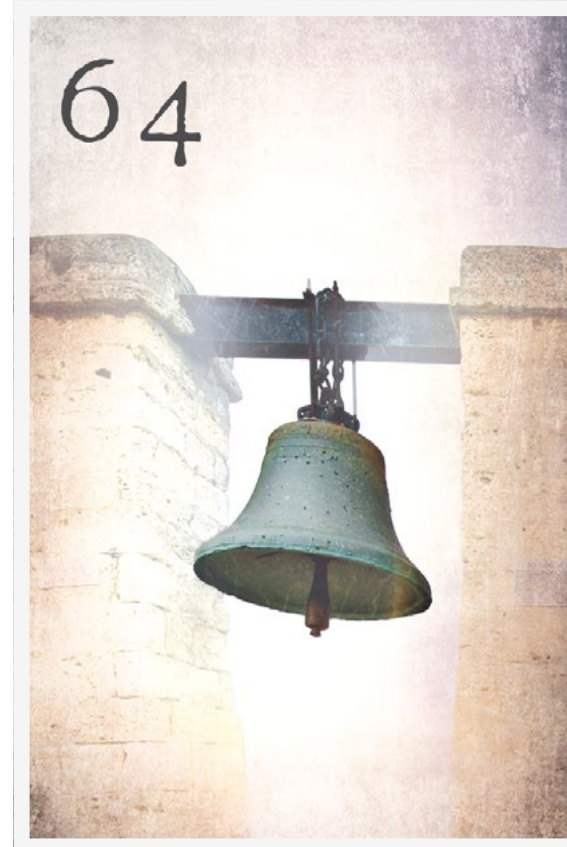
*Signaler and warner*

The bell is primarily a signal instrument. It is used to give notices, warn, or draw attention to something important. Its clear and often loud sound quality makes it an unmistakable indicator that is hard to miss. In many cultures and contexts, bells are used to signal that it is time for a certain action. The bell also serves as a call or reminder, whether in the form of commemorating or remembering important events or moments. Its sound can act as a wake-up call, prompting awakening or consciousness expansion. In this sense, it can also be understood as a warning, a call urging us to pause and pay attention to important aspects of life or specific situations.

Furthermore, the bell symbolizes gathering and assembly. Its sound is often used to bring people together for common occasions, whether for celebrations, religious services, or meetings. It symbolizes the power to unite people and create a sense of community.

### KEYWORDS

Signaler, indicator, warnings, cues, signs, calling attention, it's time, call, reminder, commemoration, remembrance, awakening, rousing, wake-up call, admonition, clarity, assembly call



# THE BRIDGE

## 65

*Connection and overcoming*

As an architectural structure, a bridge enables crossing over physical barriers like rivers or ravines, thus symbolizing the overcoming of distances and obstacles. Metaphorically, the bridge represents the ability to go beyond one's own limits and venture into what might seem daunting.

However, a bridge not only connects two physical places but can also serve as a metaphor for connecting ideas, people, or different areas of life. Its role in reconciliation, mediation, and conflict resolution makes it a symbol of unification. It represents the possibility of bringing together separate elements and creating a foundation for understanding and cooperation.

Furthermore, the bridge can symbolize accessibility and barrier-free passage. Its presence allows people to reach places that were previously inaccessible, thereby facilitating exchange and communication between different areas.

### KEYWORDS

Overcoming, connection, bridging, daring something, going beyond boundaries, transition, coupling, overcoming distance, reconciliation, mediation, reconciliation, accessibility, crossing borders, cooperation, exchange



# THE SKULL

## 66

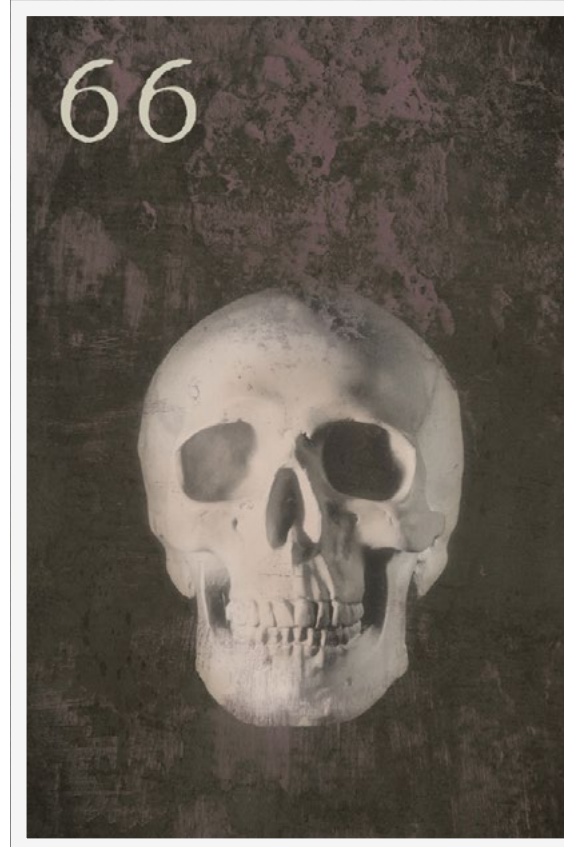
*Malicious intent and threat*

The skull symbolizes malevolent intent and the threat of harm. It focuses on the deliberate causing of harm and malicious intent. Viewing the skull as a symbol of suffering, it can be said to represent suffering from the perspective of the perpetrator. The skull is primarily a very negative card, serving as a warning sign. It implies inherent danger, as seen in warning signs that often use the skull to denote products that could cause harm.

However, the skull also possesses attributes that can be interpreted both positively and negatively, which should not be overlooked. The skull stands for fearlessness and dauntlessness. It is also a symbol of rebellion or nonconformism and can represent resistance against authority and conventional norms. The manifestation of these traits often depends on the surrounding cards in a reading.

### KEYWORDS

Malicious intent, wickedness, threat, finiteness, transience, brutality, roughness, fearlessness, boldness, rebellion, defiance, protest, resistance, nonconformity, warning, danger, piracy, lawlessness, recklessness, anarchy, resistance



# THE SWORD

## 67

*Physical violence and combat*

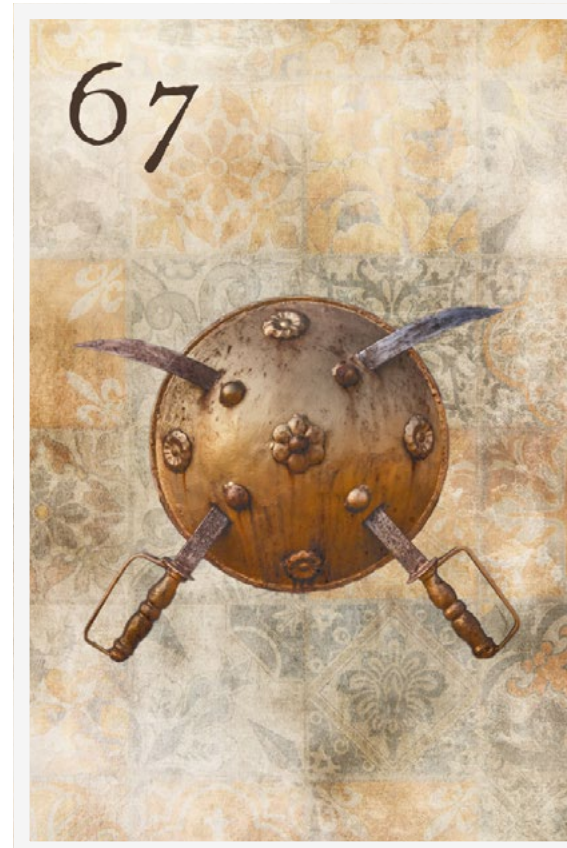
The sword is closely associated with physical violence and aggression, symbolizing a confrontation that extends beyond mere words. As a traditional weapon in combat, it represents the resolve and heroism often linked with the warrior ethos and chivalric ideals.

The sword can also stand for defense and protection, particularly in terms of standing up for someone or defending principles or people. It embodies the strength and command authority necessary to defend oneself and others, and to demonstrate steadfastness in challenging times.

Metaphorically, the sword symbolizes precision. It represents the fine line between success and failure, courage and recklessness, justice and tyranny. The blade of the sword can also signify the uncertain outcomes of decisions and actions, where each choice and movement can have significant consequences.

### KEYWORDS

Physical violence, aggression, combat, military power, physical confrontation, vouching for someone, defense, determination, heroism, authority, chivalry, uncertain outcome, blade, precision, on the edge



# THE SPIDER

## 68

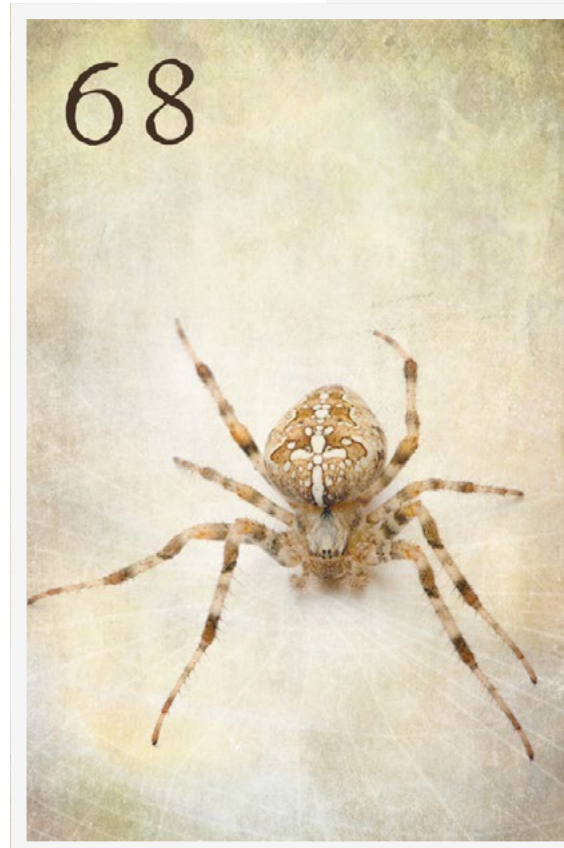
*Primordial fear and disgust*

This card is extremely complex and challenging to describe in just a few words. The spider, an animal that evokes both fascination and fear, represents the primal human fear of pain and injury and is often associated with the darker, more unpleasant aspects of the self. The spider is frequently linked with negative emotions such as disgust, abhorrence, and aversion.

The spider's web, another key element in the symbolism of the spider, signifies ambushes and hidden dangers that lurk in everyday life, often invisible yet present. It symbolizes the need for vigilance and attentiveness, as dangers are often not immediately apparent and can confront us unexpectedly. Closely related to this is its meaning as a symbol of paranoia, mistrust, and suspicion. The secretive and often unnoticed existence of the spider can evoke fear of the unknown and invisible. This card may indicate that one finds themselves in a situation where they feel insecure or threatened without knowing the exact reason.

### KEYWORDS

The primordial fear of humans regarding pain, terror, disgust, loathing, aversion, negative aspects of the self, network, linkage, entanglement, trap, ambush, a hidden danger, invisible threat, paranoia, mistrust, suspicions, being stuck, trapped



# THE HAND

## 69

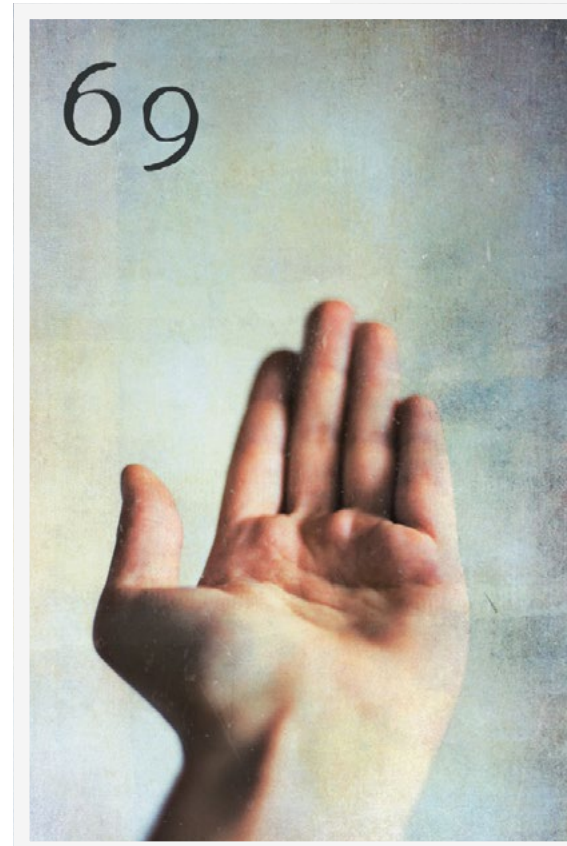
*Connection to the outside world and initiative*

Hands are one of the most crucial connections humans have to the external world and a central instrument of interaction. They serve as a tool to express the inner self outwardly and to sense and shape the world according to one's perception; they are instruments of action. Hands enable us to literally take matters into our own hands and actively mold our environment. In this regard, the hand symbolizes activity and implementation, the ability to turn ideas into reality. Moreover, the hand is a symbol of touch and sensation. It allows us to physically feel our surroundings and is a vital channel for sensory experiences. This attribute makes the hand a symbol of closeness and connection.

The hand also stands for dexterity and skills. It represents the capability to perform delicate work, thereby signifying craftsmanship and artistic creation. In gestures and body language, hands play a crucial role and serve as a means of expressing emotions and intentions.

### KEYWORDS

Connection to the outside world, interaction, initiative, taking matters into one's own hands, taking action, intervening, shaping, activity, implementation, touch, sensation, closeness, connectedness, dexterity, skill, gesture, body language



# THE PYRAMIDS

## 70

### *Mysticism and permanence*

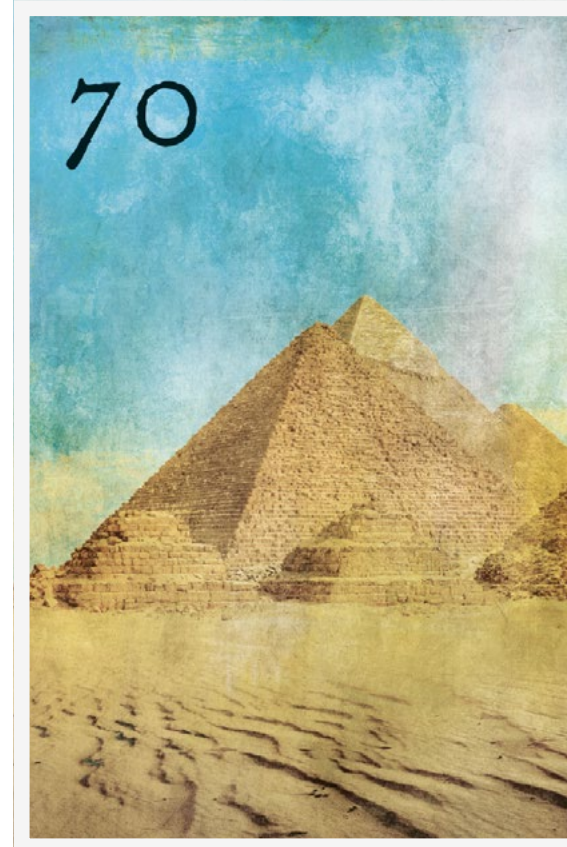
The pyramid, one of the oldest and most awe-inspiring structures in human history, primarily symbolizes the mystical and mysterious, often associated with ancient knowledge and the concept of eternal life.

As a structure that has endured for millennia, the pyramid also represents durability and sustainability. It reminds us that it is possible to create something lasting, transcending one's lifespan and leaving a mark in history.

The pyramid's imposing presence also signifies a desire to impress others and create something magnificent. Its massive structures and precise construction not only embody astronomical and mathematical knowledge but also human ambition and the ability to achieve extraordinary feats that go beyond the confines of everyday life. Pyramids are remarkable symbols of human aspiration, touching both the physical and metaphysical realms.

### KEYWORDS

Mysticism, occultism, ancient knowledge, eternal life, permanence, sustainability, impressiveness, leaving an impression on someone, creating something lasting, unsolved mysteries, hidden knowledge, speculation, mathematics, proportion, geometry, architecture, legacy



**The Mondnacht**

**LENORMAND**

**card deck is**

**available for purchase**

**at Etsy:**

**[kartenorakel.etsy.com](https://www.etsy.com/shop/kartenorakel)**

## Mondnacht Lenormand Add-on cards

Author: Patrick Scheller

Publisher: Patrick Scheller, Brüder-Busch-Str. 53, 53721 Siegburg,  
Germany, [www.kartenorakel.com](http://www.kartenorakel.com), [info@kartenorakel.com](mailto:info@kartenorakel.com)

eBook Version: 1.1

Copyright © 2023 Patrick Scheller

All rights reserved. Reproduction, in whole or in part, only with the  
written permission of the author.

Deck of cards depicted: Mondnacht Lenormand Add-on cards

Illustration: Patrick Scheller

You can find more information about the Mondnacht Lenormand  
on the website at:

<https://lenormand.cards>

And on the author's blog:

<https://kartenorakel.com>

The information in this eBook is for entertainment purposes only  
and is not a substitute for medical, legal or other professional ad-  
vice. Any liability of the author or the publisher is excluded.

