

Mondnacht Lenormand



MADE BY KARTENORAKEL
www.kartenorakel.com

TABLE OF CONTENTS

- 03** **The Mondnacht Lenormand**
A brief introduction to the Mondnacht Lenormand Oracle
- 04** **Using Lenormand cards**
A brief introduction to the interpretation of Lenormand cards
- 06** **The meanings of the Lenormand symbols**
An introduction to the basic meanings of Lenormand symbols
- 44** **Imprint**
Legal information

THE MONDNACHT LENORMAND

The Lenormand cards have a long history and are among the most renowned fortune-telling cards in Europe. Since the 19th century, they have proven effective in providing insights into the past, future, and present. In recent years, they have gained an ever-growing following worldwide, leading to a great variety of uniquely designed card decks that can cater to almost any preference and taste.

The Mondnacht Lenormand is a card deck with a particularly expressive power and depth. It is characterized especially by its calm and clear imagery, as well as a colorful, inspiring representation of the classic Lenormand symbols. It possesses a nostalgic and simultaneously mystical charm.

The carefree energy of this deck and the clarity in the presentation of the symbols allow the viewer to focus on the essential elements of each card. It is a deck that enjoys great popularity among beginners, advanced users, and professionals alike. Users frequently emphasize how easy this deck is to read for them and that it radiates a special energy.

I hope the Mondnacht Lenormand card deck supports you on your spiritual journey and inspires you to delve deep into your subconscious. I wish you much joy and enlightening insights while reading this card oracle.

Yours,
Patrick Scheller

USING LENORMAND CARDS

Every Lenormand deck consists of 36 cards, each of which has a specific symbol and a fixed number. The symbols in Lenormand are characterized above all by the fact that they do not contain mystical and hidden secret signs, as is the case in the Tarot. They show simple images that are absolutely familiar to you from your surroundings, that you encounter regularly in your life and whose meaning you can often grasp intuitively, even without having learned them before. It is precisely this circumstance that makes Lenormand as a divination system so accessible and easy to learn.

Each card in the Lenormand deck can be understood as a placeholder for different terms and concepts. The Clover for example means luck, the Coffin represents mourning or the Dog stands for friendship. Every person will immediately intuitively understand these symbolic connections. The specific meaning that a symbol has in any context, usually has evolved and grown over centuries.

In some cases, it's a statement that can be agreed upon by everyone in the world. Other symbols, on the other hand, are culturally determined and can take on very different meanings in different regions.

Ultimately, the meaning is always dependent on you personally.

Answering questions

There are many ways to read and interpret the cards in Lenormand. To explain this in detail is far beyond the scope of this digital booklet. Nevertheless, I would like to briefly describe the basic procedure here.

First of all, you should be completely clear about what exactly you want to know and, above all, why? Only when you have a precise idea of what your question actually is and how to phrase it, will you be in the position to expect a satisfactory answer from the cards. In particular, you should choose the wording openly, i.e. in a way that it cannot be answered by a simple yes or no.

The next step is to shuffle the cards and then lay them out. There are different systems for this, such as the Grand Tableau or the Celtic Cross. As a beginner, however, I would recommend that you start with a simple three-card draw. You draw the cards from the deck and lay them out in a row in front of you. Then you interpret the symbols and answer the question in a complete sentence.

Examples of classic interpretations of a three-card spread

What can I do to find myself again?

Tree, Ship, Sun. Give yourself some time off (Tree) and take a trip (Ship) to a sunny and warm location (Sun).

Which feelings connect us?

Cross, Key, Anchor. The belief (Cross) in success (Key) and in perseverance (Anchor) connects you.

How will the conversation with my supervisor go next week?

Scythe, Clover, Park. It is to be expected that the conversation will not be very pleasant (Scythe and Clover) and it will be about the customers (Park), possibly customer complaints.

How will my relationship develop in the near future?

Ship, Stars, Mountain. Common goals (Ship) will emerge (Stars) in the relationship and dissolve resistance (Stars+Mountain).

What can I do to get his attention?

Woman, Dog, Man. Woman and Man are looking in different directions here, which is a confirmation that the Man is indeed not aware of the Woman. Between them lies the Dog as a symbol of friendship and loyalty. The cards say that the questioner should express her loyalty in order to get his attention.

THE MEANINGS OF THE SYMBOLS

On the following pages I will introduce you to the classic 36 symbols of Lenormand. You will learn how their meaning is derived traditionally and with which keywords they can be associated.

To truly immerse yourself in the world of the Mondnacht Lenormand, it's best to engage deeply with the intricate details depicted on each card. Let these representations profoundly affect you. This approach allows you to discover a unique meaning for each of the 36 cards, which you will then be able to genuinely feel. Over time, this practice nurtures your intuition, enabling you to receive reliable answers to all your questions. Let your own creativity guide you in interpreting the cards.

THE RIDER

01

Good news, movement and departure

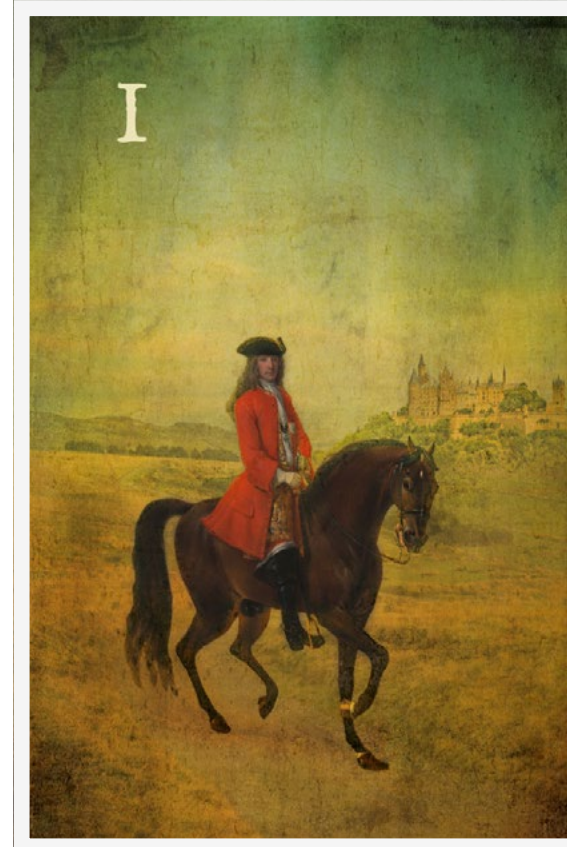
In earlier times, a horse was the fastest means of transportation available, and it was often used by people to deliver important messages. The arrival of a mounted messenger was usually a welcome event, as it brought the long-awaited information.

The horse and its unique qualities are also a key element of this card. The dynamism, strength, and speed of these animals have been highly valued since ancient times. As a beast of burden, it enabled humans to expand further and faster than would have been possible on their own. In this respect, the horse has become a symbol of expansion and progress.

The Rider also symbolizes a departure, the start of a new development or activity. It represents the moment when we decide to start something or initiate a process.

KEYWORDS

Good news, messenger, positive outcome of a situation, movement, departure, progress, expansion, means of transportation, traffic, trade, speed, quickness, activity, beginning, sport, livestock, car



THE CLOVER

02

Good luck and gambling

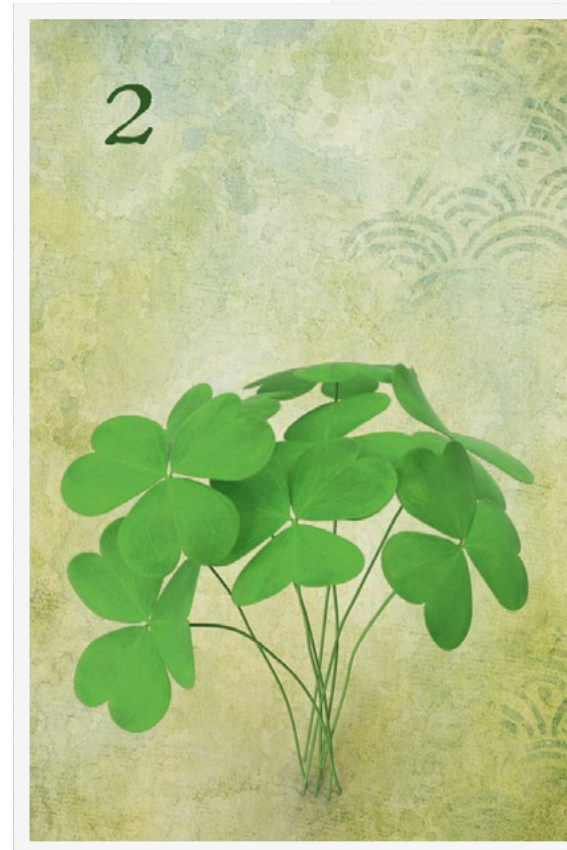
In nature, this small and inconspicuous plant is typically found in its three-leaf variant, making the discovery of a four-leaf clover a lucky find. For this reason, people have long regarded the rare four-leaf clover as a symbol of good fortune or a lucky charm.

Regardless of its number of leaves, clover is a plant with many positive attributes. Its ability to bind large amounts of nitrogen from the air makes it a natural fertilizer, enhancing soil fertility. Farmers in ancient times noticed that crops were significantly more abundant when clover had previously grown in the field, associating it with a fortunate twist of fate.

However, in the Lenormand context, the Clover represents a small, manageable moment of luck or a minor gain.

KEYWORDS

Luck, small profit, gamble, chance, risk, serendipity, good fortune, small gain, joy, fun, humor, amusement, grass, fertilizer, feed, raw food, short term, short duration



THE SHIP

03

Dreams and desires

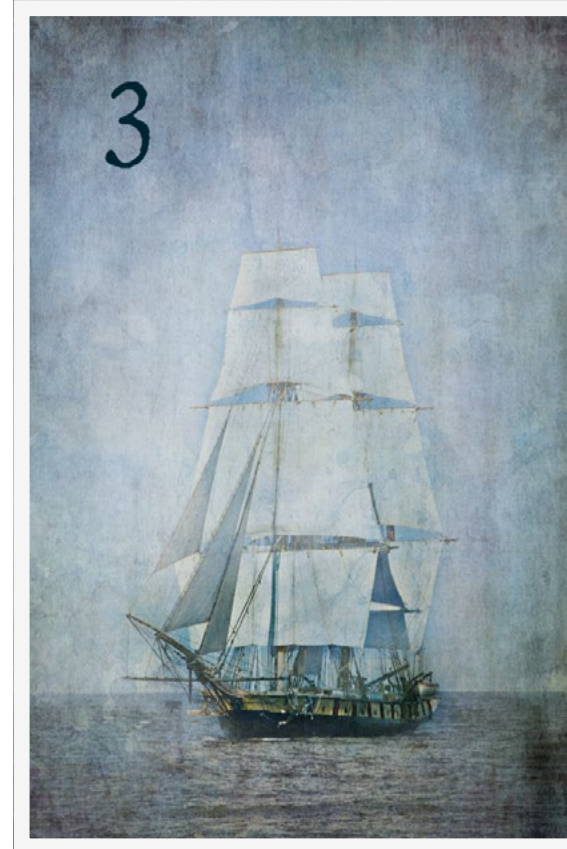
In earlier times, the ship was the premier means to traverse great distances and explore unknown worlds. Immigrants often used this aquatic pathway to reach distant lands and start a new life.

But the ship was more than just a mode of transport; it was also a symbol of freedom, a means to realize one's dreams and desires. Such journeys into the unknown were always accompanied by a significant measure of adventurous spirit and courage.

Another element of this card is the water. The waves on the sea can be seen as a symbol of life's highs and lows, adding an additional layer of meaning to the card.

KEYWORDS

Dreams, desires, goals, wishes, freedom, leaving something behind, courage, foreign, far away, abroad, journey, means of travel, water, sea, tides, waves, up and down, sway, spirit of exploration, adventure



THE HOUSE

04

Family and stability

A house is generally understood as a building that provides shelter and a place to live. But it usually represents more than just a residence. Since the time humans became sedentary, it has often been the central place of personal life management. It's a retreat that offers both protection and security, as well as being the focal point of family life. It encompasses everything that is private, as opposed to public. Additionally, the stability and solidity of a structure also contribute to the symbolic meaning of the house.

The fence surrounding the house represents protection and demarcation. It encloses and safeguards the sacred area of the home while keeping the outside world at bay. This can refer to the physical safety of a house, but also metaphorically to how we feel in our own safe zone or comfort area. The fence separates the familiar from the unfamiliar, the inside from the outside, symbolizing the boundary between our private and public lives.

KEYWORDS

Family, solidity, firmness, base, building, living, living situation, place of residence, locality, origin, home, security, habit, privacy, comfort zone, place of retreat, planning for the long term



THE TREE

05

Health and tranquility

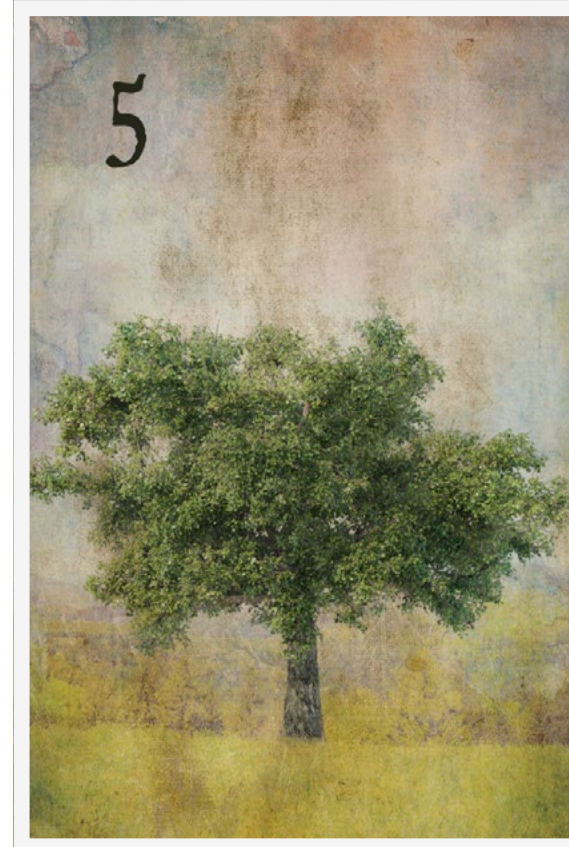
The tree is one of the oldest symbols in human history and is deeply rooted, quite literally, in many cultures. Many species of trees outlive humans by centuries, naturally leading to their symbolism for health, longevity, and life in general, as well as nature itself.

With its appearance and seemingly perpetual growth of intricately branched limbs and leaves, the tree also embodies concepts like development and growth. Simultaneously, being firmly anchored to the ground, it represents rigidity and immobility.

This card also addresses the theme of rootedness, in the sense of a strong connection to a specific place or idea. The concept of putting down roots is also implied by this card.

KEYWORDS

Health, calmness, serenity, longevity, life, rootedness, forest, wood, nature, naturalness, pause, rest, monotony, long-term growth, patience, immobility, genealogy, family tree



THE CLOUDS

06

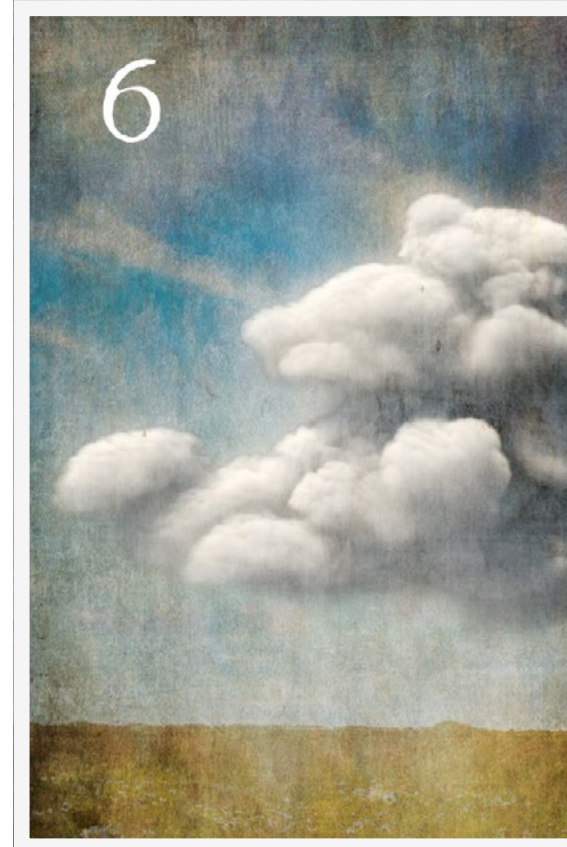
Fear and uncertainty

In times past, people were even more vulnerable to the forces of nature than today. Dark clouds appearing on the horizon often signaled a serious threat to life and limb. It's no surprise, then, that clouds are associated with fear and threat. This association is also reflected in language, with expressions like „dark clouds gathering“ symbolizing impending trouble. The physical properties of clouds and the circumstances of their appearance also shape this card's meaning. They represent air and wind, but also fog, signifying obscurity and lack of transparency.

Even though clouds are considered negative cards in Lenormand, they also contain a positive aspect. Clouds are, in essence, a play of light and shadow, reminding us that both darkness and brightness exist in every aspect of life. Where there is a shadow, there must also be light. The changing formations of clouds, interspersed with sunlight, symbolize life's fleeting moments where joy and sorrow, hope and disappointment are closely intertwined.

KEYWORDS

Fear, ambiguity, uncertainty, non-transparency, opacity, cover-up, obscurity, fog, air, wind, storm, threat, crime, pessimism, autumn



THE SNAKE

07

Complications and detours

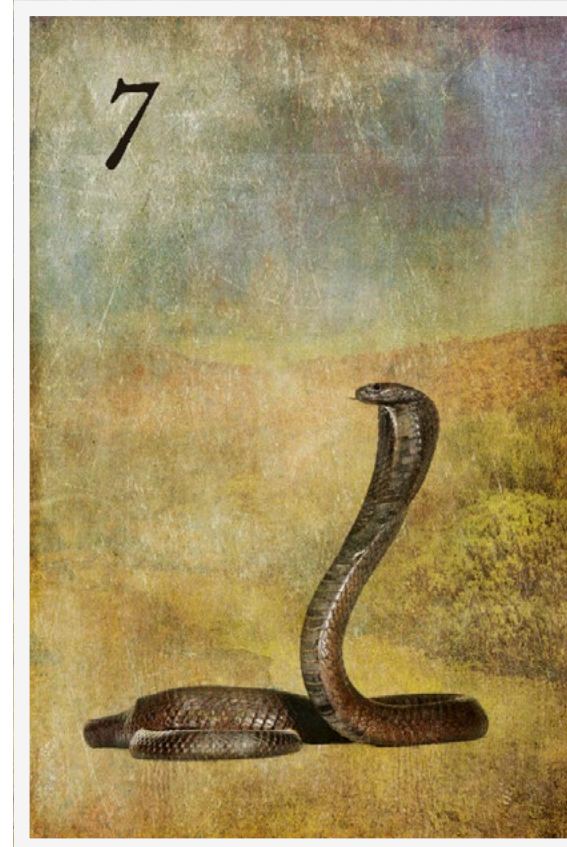
The innate aversion most people have towards snakes and their extensive demonization within Christian tradition likely contributed to the generally negative perception of this symbol. In the Old Testament story of Eve's temptation, the snake represents sin and, more broadly, signifies complications in the widest sense. People often prefer to take a longer detour rather than encountering a snake.

The snake's coiled body lends symbolic meaning to the concept of an indirect connection between two points.

However, the snake also embodies positive aspects. Its ability to shed its skin symbolizes renewal and transformation. This act of rejuvenation, performed through shedding, has made the snake a symbol for the medical profession since ancient times.

KEYWORDS

Complications, difficulties, complicated, detours, serpentines, zigzag, tortuous, mother, transformation, temptation, seduction, sin, intelligence, medicine, natural medicine, poison, slipperiness



THE COFFIN

08

Deep sorrow and finality

The coffin, as an object, primarily represents a container for the burial of a corpse. However, the most significant message of this card lies in the sorrow typically associated with it. Profound grief, suffering, and misfortune are its primary interpretations, along with themes of farewell, mourning, and the general end of things.

While this symbol is intuitively linked to death, in Lenormand readings, it doesn't necessarily imply physical death. It usually signifies the need to bid farewell to the past and bring closure to something. In most instances, this process is accompanied by substantial sorrow.

Yet, the coffin isn't solely a negative symbol. It can also signify a transition into a new phase of life, indicating a process of maturation or even the liberation from an oppressive state.

KEYWORDS

Great sorrow, suffering, unhappiness, afterlife, farewell, end, grief, loss, trauma, shadow, transition, maturation, redemption, depression, release, joylessness, paralyzing, eternity, sickness



THE BOUQUET

09

Joy and harmony

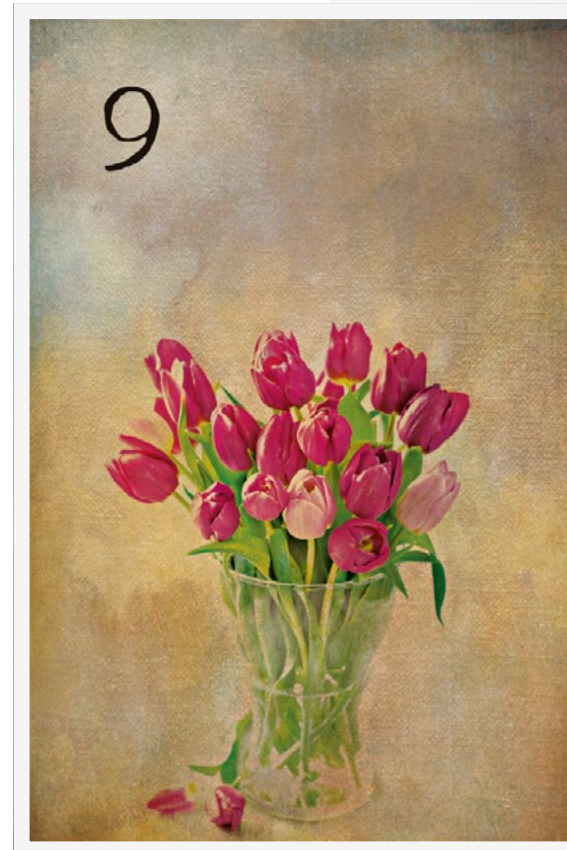
Gazing upon a sea of colorful flowers immediately evokes feelings of joy and harmony. The vibrant diversity of blossoms represents beauty and creativity.

Furthermore, flowers are used as tokens of appreciation, recognition, and gratitude across almost all cultures worldwide. They are given to people we wish to please, whether as a simple gift at a social gathering or as a symbol of special affection for a loved one.

The natural characteristics of flowers also lend significance to this card. They symbolize the unique fragrance emitted by each type of flower, which has the power to evoke memories, stir emotions, and soothe the mind. Their rapid growth is another meaningful aspect of this symbol. In a very short time, flowers can transform from tiny seeds into magnificent structures, filling landscapes with color and life.

KEYWORDS

Joy, harmony, creativity, art, conviviality, gift, gratitude, contentment, beauty, politeness, courtesy, festivity, gathering, fast growth, fragrance, bouquet, charm, spring



THE SCYTHE

10

Danger and pain

The scythe has a long tradition in agriculture. Primarily, it is a tool for mowing grass and crops, making it a symbol of harvest.

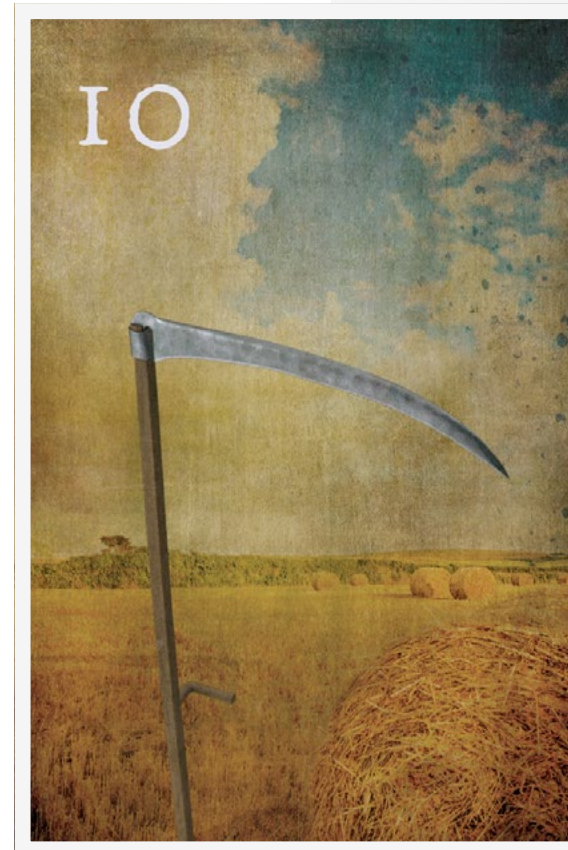
However, it is also a potentially dangerous instrument capable of causing severe injuries and has been used as a weapon. Similar to its sharp edge, the scythe often points to things in the card reading that should not be ignored.

Metaphorically, the blade of the scythe can also symbolize cutting something off or separating from a matter or idea. It usually represents a deliberate and intentional sharp break.

The scythe can also indicate an unexpected turn of events or a sudden occurrence that throws us off course or forces us to reconsider our plans and intentions.

KEYWORDS

Danger, pain, injury, aggression, shock, suddenness, surprise, intent, weapon, tool, iron, agriculture, harvest, sharp incision, separate, detach, cut off, farming, lightning



THE RODS

11

Dispute and doubt

A rod is a bundle of leafless twigs. It has been used for various purposes, but for a long time, it was commonly used as a disciplinary instrument for punishment.

Broadly speaking, the rod symbolizes conflict, such as a disagreement or altercation, which can have a hurtful character and often contains a certain degree of aggression. In any case, the rod represents opposing positions that have clashed and seek resolution, often painfully.

Every confrontation of this nature is associated with doubt, either about one's own position or that of the opponent. The rods are also referred to as a card of communication since every conflict involves dialogue between differing viewpoints.

KEYWORDS

Dispute, quarrel, doubt, confrontation, communication, conversations, accident, discord, negotiation, disruption, rupture, conflict, punishment, chastisement, double



THE OWLS

12

Sorrow and stress

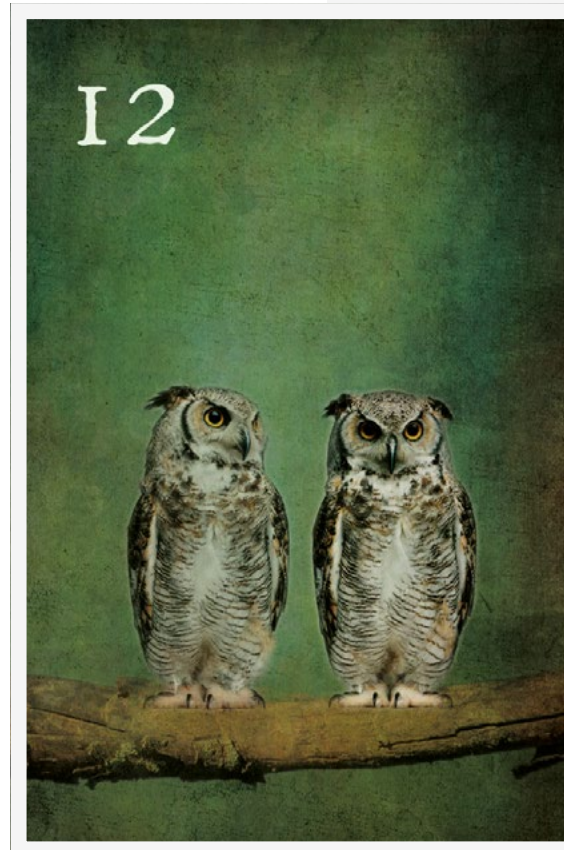
The owl, a nocturnal creature often found in places that humans find eerie, has a penetrating gaze and a mysterious aura. This has led to the development of negative superstitions around these animals since the Middle Ages.

Owls were often seen as symbols of impending death or general harbingers of misfortune. Even today, hearing an owl's call alone in the woods at night can make many people shiver and feel a certain anxious unrest.

On the other hand, owls have been revered as symbols of wisdom since antiquity and are considered advisors with prophetic abilities. Athena, the Greek goddess of wisdom and the namesake of the city of Athens, chose the owl as her companion. Homer described her as „owl-eyed“ because she saw things others could not, particularly those that occurred in the darkness.

KEYWORDS

Sorrow, stress, worry, hassle, everyday worries, tribulations, unrest, agitation, commotion, chatter, gossip, nervousness, workshop, advice, wisdom, consulting, prophecy, half, share, seeing, grandparents



THE CHILD

13

Novelty and new beginning

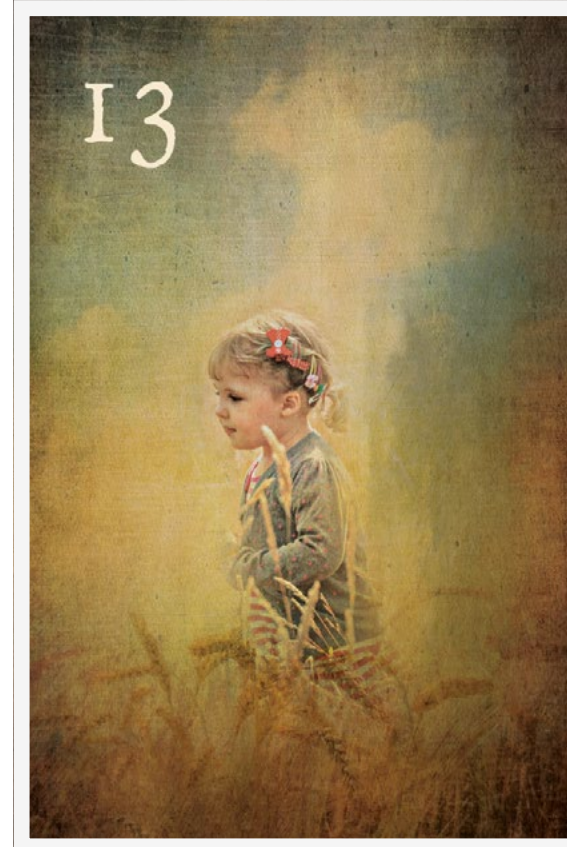
The Child, first and foremost, represents a person in the stage of life between birth and adulthood, naturally symbolizing life that is eager to develop.

With immense curiosity and openness, this young being steps into the world to explore and experience it. Inevitably, this also involves a certain naivety and dependence on parents or more developed individuals who have a wealth of experience to draw from.

At the same time, the Child symbolizes a new beginning, initiation, and the start of a learning process. It marks the moment we enter a new phase of life, whether it's a new task, role, or experience. The initiation through the Child symbol encourages us to step out of our comfort zone and embrace the unknown. It presents an opportunity to grow, evolve, and view the world from an entirely new perspective.

KEYWORDS

New beginning, novelty, child, infancy, unpreparedness, something small, something new, immaturity, curiosity, naivety, innocence, trust, lack of independence



THE FOX

14

Falsity and lies

The fox is an animal that has found its place in legends and fairy tales around the world. Across these global fox myths, numerous similarities and parallels exist.

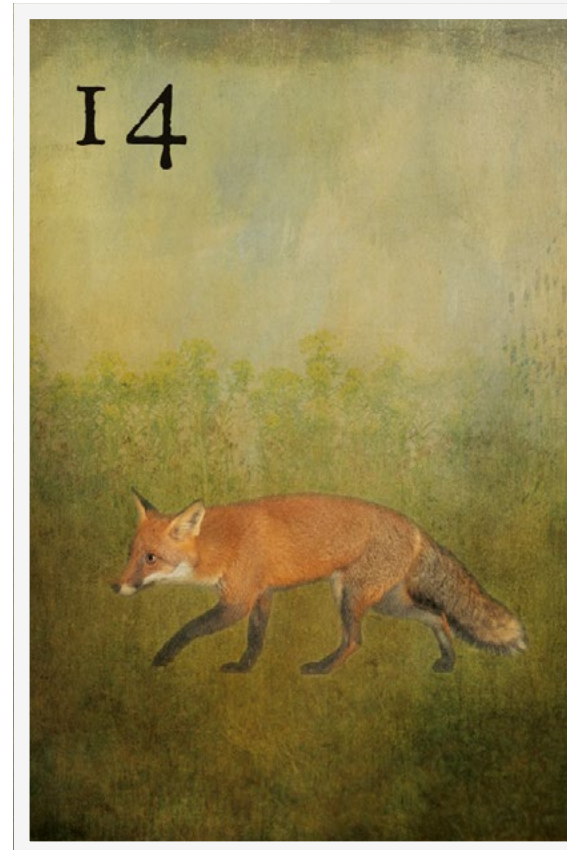
Typically, the fox is associated with unflattering terms like deceit, adultery, and theft. The latter likely stems from the fox's tendency to steal farm animals.

In the Bible, the fox is also mentioned multiple times, symbolizing a false prophet and embodying cunning.

However, more positive attributes such as cleverness, camouflage, and caution are also associated with the fox. This dual perception of the fox persists to this day, as evident in the phrase „sly fox,“ which conveys a notion that is not entirely positive.

KEYWORDS

Falsity, lie, deception, disguise, hypocrisy, cunning, trickery, shrewdness, deceit, scam, selfishness, self-interest, camouflage, caution, distrust, warning, something goes wrong



THE BEAR

15

Strength and power

The bear is a powerful and mighty creature in the animal kingdom, prevailing against all adversities in nature with its immense vitality. The cultural reverence of this impressive animal has a long history in human civilization. The earliest traces can be found in cave paintings over 70,000 years old, suggesting the special status bears have held in the eyes of humans.

The physical attributes of size, strength, and assertiveness, combined with its apparent calmness, are standout features of the bear, making it a symbol of self-assured authority and sovereignty.

In the background of this card, a fir tree is depicted, symbolically reinforcing the bear's strength. The fir is known for its robustness and ability to survive in cold and harsh environments. Therefore, it can be seen as a symbol of strength and survival capability.

KEYWORDS

Strength, power, respect, authority, magnitude, greatness, order, straightforwardness, support, stability, self-confidence, sovereignty, competence, perseverance, assertiveness, dominance, father



THE STARS

16

Clarity and spirituality

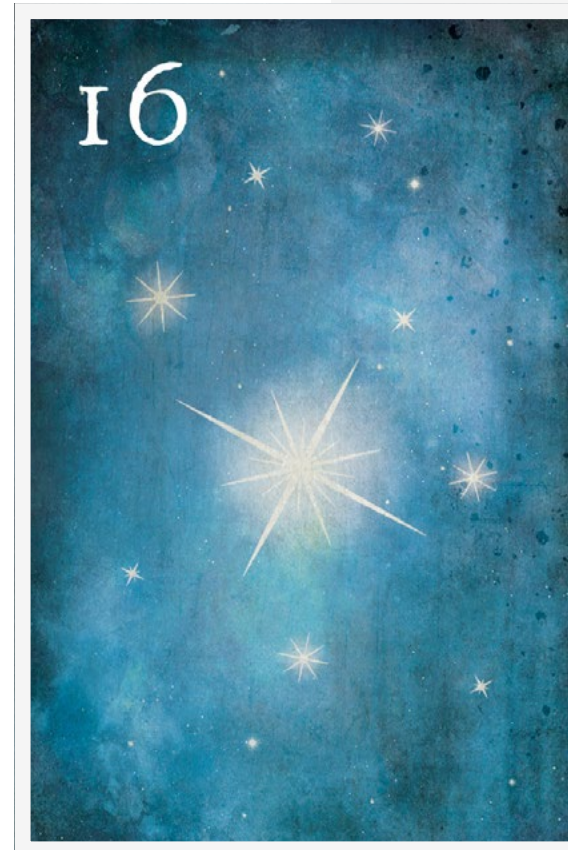
The endless expanse of the universe and the multitude of its stars, planets, and galaxies provide the framework for this symbol. However, stars are actually visible only at night under clear, cloudless skies.

The observation of celestial bodies has fascinated humans from the earliest times, instilling in them a sense of great awe. The sight of the stars and the observation of their movements along regular paths convey a feeling of being part of a grand order.

This notion is reflected in the common phrase „reaching for the stars,“ which shows how this symbol has embedded itself in human consciousness. Stars symbolize for people the pursuit of goals, values, and ideals.

KEYWORDS

Clarity, spirituality, sensitivity, abundance, fullness, genuine, perfection, much, potential, confidence, values, ideals, sky, astronomy, night, constellation, esotericism, astrology



THE STORKS

17

Change and modification

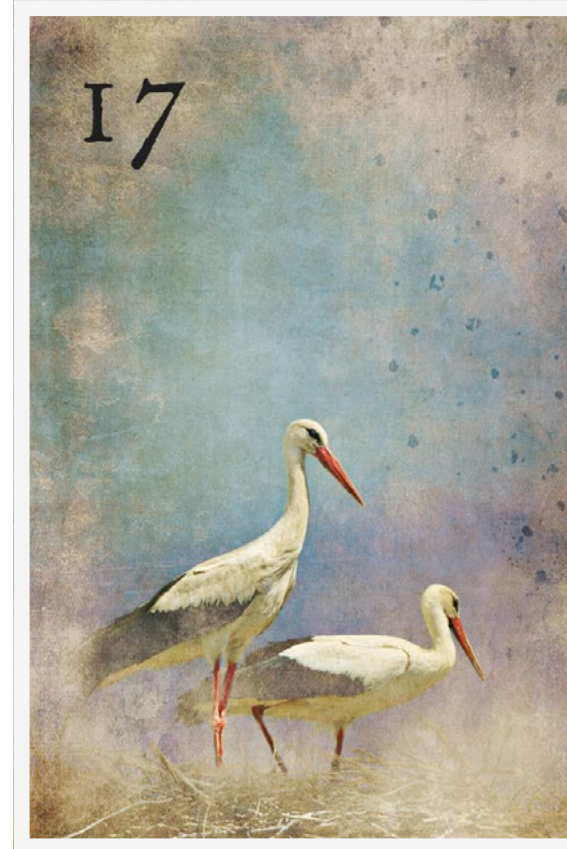
The annual return of storks in spring heralds the end of the cold winter and the associated profound changes in nature.

Traditionally, the stork is a symbol of fertility and a harbinger of good luck, a view shaped by fairy tales and legends. However, it is a fact that monogamous storks take intensive care of their offspring, and in turn, the young birds similarly care for, feed, and protect their old or sick parents. This unique behavior might have contributed to the perception of storks as bringers of children.

Additionally, the fact that storks can effortlessly fly long distances, significantly changing their location and living conditions, also imparts a meaningful aspect to this card.

KEYWORDS

Change, modification, variation, upheaval, transformation, mobility, fertility, airplane, flying, something comes easily, float, move forward quickly, balance, lightness



THE DOG

18

Loyalty and friendship

Approximately 12,000 years ago, the dog was domesticated by humans, and since then, it has epitomized the loyal friend. The dog accompanies humans in all walks of life and remains devoted to them unto death.

In Lenormand, this card primarily symbolizes those qualities of the dog that we cherish: loyalty and friendship. The dog also represents steadfastness and reminds us that, no matter how turbulent life may be, true friendship and genuine bonds remain firmly anchored and provide us with support.

Furthermore, the dog is a pack animal, accustomed to living within a fixed hierarchy and, if necessary, submitting to it. It has a strong sense of territory and is always ready to defend its home and the members of its pack.

KEYWORDS

Loyalty, friendship, commitment, sincerity, reliability, alertness, vigilance, helpfulness, comradeship, honesty, virtue, attachment, sticking with something, hierarchy, subordination, follow



THE TOWER

19

Isolation and separation

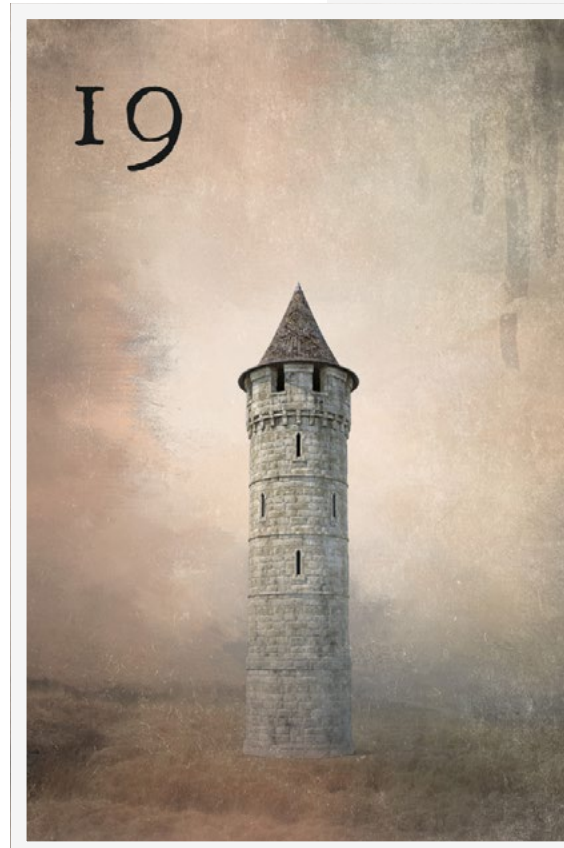
The tower is a structure primarily defined by its height, towering over its surroundings. With its thick stone walls, it can be a retreat, separating and protecting its inhabitants from external influences. However, it can also act as a prison, preventing those within from connecting with the outside world. In any case, the concept of separation and demarcation is a crucial factor in understanding this card.

Moreover, the tower has always been a status symbol representing the human urge to reach new heights. Whether one looks at ancient castle towers or modern office skyscrapers, it's always about showcasing power and the human drive to transcend one's limitations.

Additionally, the tower is seen as a symbol of independence and represents education and learning.

KEYWORDS

Separation, isolation, complete loss, reserved, distinction, delimitation, demarcation, wall, border, protection, entrepreneurship, company, teaching, university, high building, masonry, protection, rise, status symbol



THE PARK

20

Public and facade

The park is primarily a place where people come together and interact. It's a public space, and this aspect is the most crucial element in interpreting this card. It's about the social environment, but not necessarily about people who are close to us; rather, it's about life as it is publicly visible.

Moreover, the park is also a place for leisure, relaxation, and recuperation. Despite its openness, it is not a place where one typically reveals their innermost selves. There's a tendency to show only a façade, to wear a mask and present oneself in the public eye as one wishes to be seen.

As a symbol of public space and community, this card in Lenormand also represents authorities, institutions, political parties, or clubs in a broader sense.

KEYWORDS

Public, publicity, facade, externalities, institution, authority, association, party, public space, internet, celebrity, acquaintances, fame, leisure, openness, social life, obvious, audience



THE MOUNTAIN

21

Obstacles and blockades

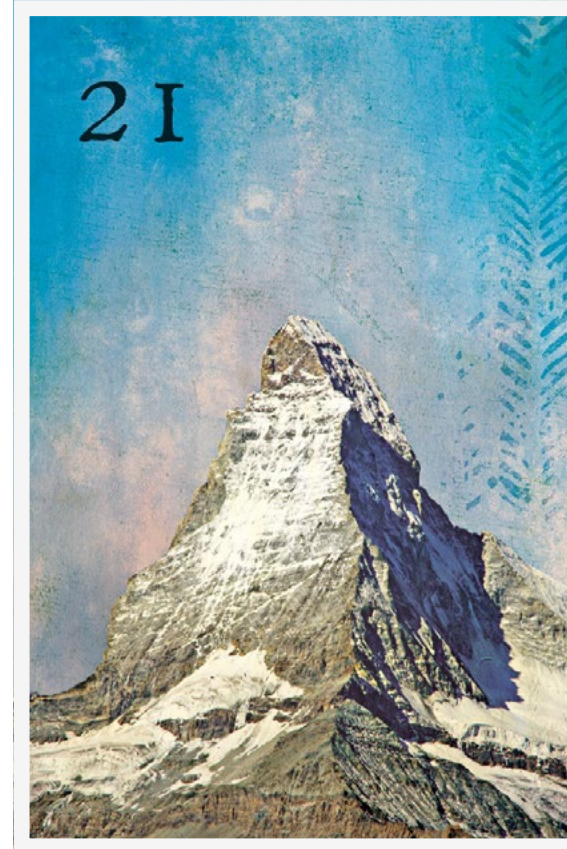
The mountain represents a majestic elevation in the landscape, impressing observers with its immense size and apparent insurmountability. However, when viewed pragmatically, a mountain is essentially an obstacle that blocks the path and needs to be overcome.

To surmount these obstacles or to resolve blockages, significant efforts are required, which also take time, according to this card. The mountain always poses a challenge.

Considering the natural composition of a mountain, it consists of layers of rock. In this sense, in Lenormand, the symbol can also be interpreted as rock of various types or as minerals.

KEYWORDS

Obstacle, blockade, blockage, challenge, burden, resistance, difficult, problem, delay, reaching one's limits, hardness, stone, minerals, summit, mountains, winter



THE WAYS

22

Decisions and options

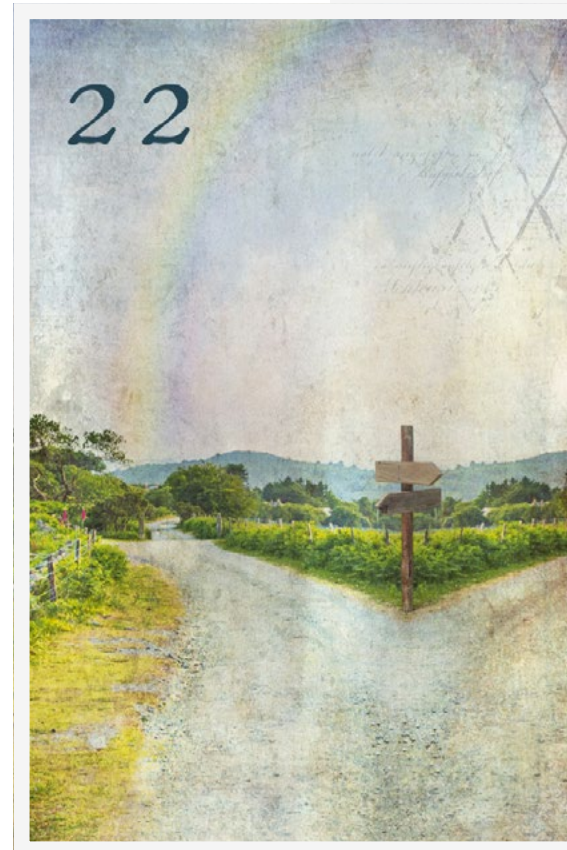
Paths or roads are primarily connections between different places. They enable easy travel from one point to another or the exploration of unknown areas.

These pathways are usually interconnected in a network and often intersect. At a crossroads, one is confronted with multiple choices, each leading to different outcomes or destinations. Intersecting paths thus represent a decision that must be made or alternatives that present themselves.

In this sense, this card is primarily a symbol of decision-making, as well as the moment when an individual stands at a crossroads and must choose which path to take. In a way, a crossroads is also a symbol of change, as it always involves a change in direction.

KEYWORDS

Decision, turning point, direction, options, alternatives, decisiveness, causality, continuity, consideration, choice, the way out, direction, street, crossroads, road, orientation, network



THE MICE

23

Partial loss and deficiency

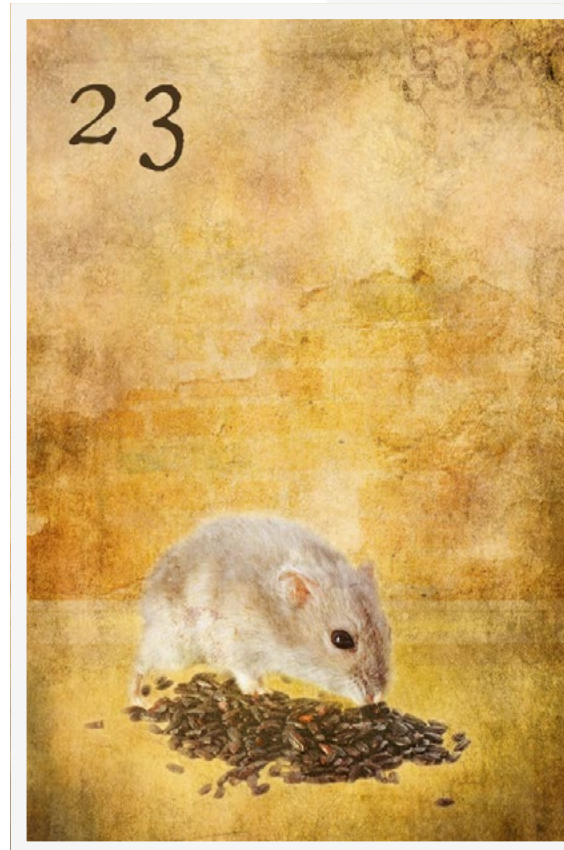
These small rodents have a long and ambivalent history with humans. In the context of Lenormand, these creatures are primarily viewed from their less pleasant side as pests that damage food supplies. They often gnaw unnoticed on whatever they can find, leading to a steady loss of provisions for humans. From this perspective, the interpretation of the Mice in Lenormand is as a symbol of loss.

Unlike the Tower, which represents total loss, the Mice usually indicate that something is diminishing, not that it is completely gone. The Mice are also commonly associated with concepts like impurity and disease.

However, like all Lenormand cards, the Mice also have a positive aspect. When they appear with negative cards, they steadily nibble away at those negative aspects just as they do with the positive ones.

KEYWORDS

Partial loss, deficiency, humility, lack, decrease, taking something away, abandonment, renunciation, reduction, dwindling, nutrition, food, dirt, filth, thrift, disgust, low value, stinginess, theft, lack of self-esteem



THE HEART

24

Love and affection

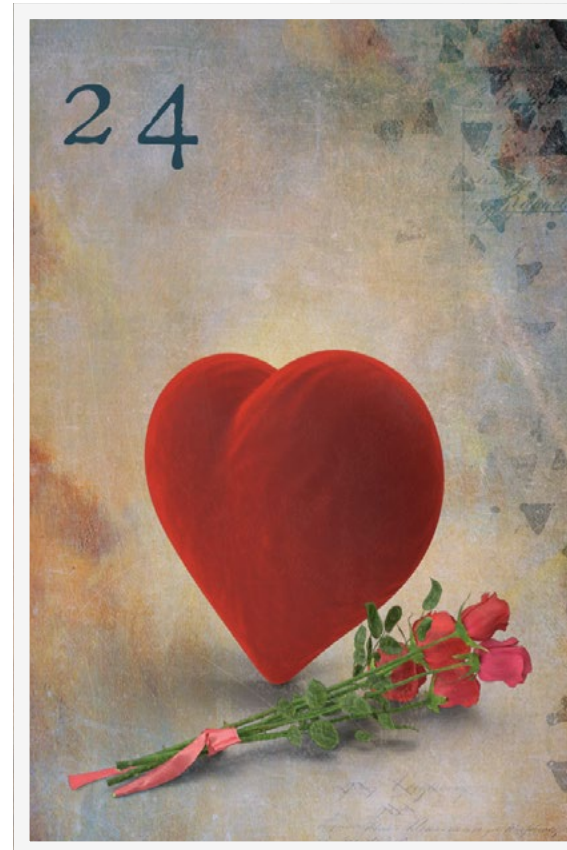
The heart has long been a symbol of love and the seat of deep emotions. Its typical shape likely originates from the stylized representation of ivy leaves, which in antiquity were seen as a symbol of eternal love. The significance of the heart as the seat of feelings has been acknowledged since those times, and this notion continues to be reflected in language today, such as when we say something “touches our heart” or when we “pour out our heart” to someone.

The heart represents love for people, but also for anything else that can be dear to one’s heart. This card indicates what makes our heart beat faster. It doesn’t always have to be about romantic relationships. Anything that can touch a person’s heart is expressed by this card.

In some cases, an interpretation based on the organic properties of the heart is also meaningful. Thus, this card can symbolize blood or the circulatory system, or more mundanely, a pump.

KEYWORDS

Love, intimate feelings, infatuation, kindness of heart, affection, esteem, adoration, sympathy, enthusiasm, rapture, charity, self-love, rhythm, pump, blood, flesh



THE RING

25

Relationships and contracts

Rings are among the oldest pieces of jewelry in the world, worn by both women and men alike. However, their significance extends far beyond being mere objects of value.

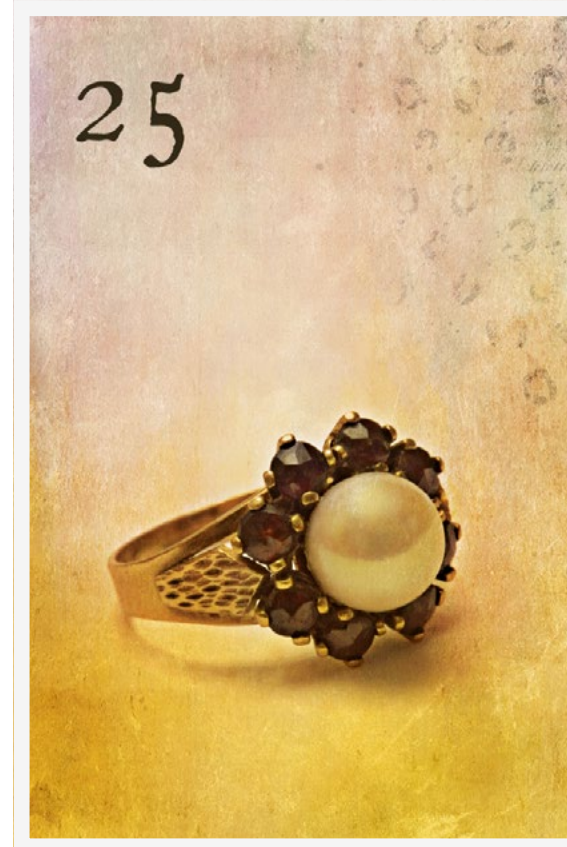
Often, they represent a sense of belonging; sometimes, they are an expression of power or a declaration of faith. But they always symbolize a connection with a person, a group, an idea, or a cause.

In earlier times, important documents were often sealed with a signet ring, symbolizing the conclusion of a contract.

Furthermore, the ring symbolizes a circle or a loop without a beginning or end, and thus can be used as a symbol of completeness. It may indicate that something is perpetually recurring and unchangeable, having no beginning or end.

KEYWORDS

Relationship, contract, marriage, partnership, bond, obligation, covenant, circle, sphere, commitment, oath, vow, promise, repetition, unity, gold, treasure, jewelry, value, pattern



THE BOOK

26

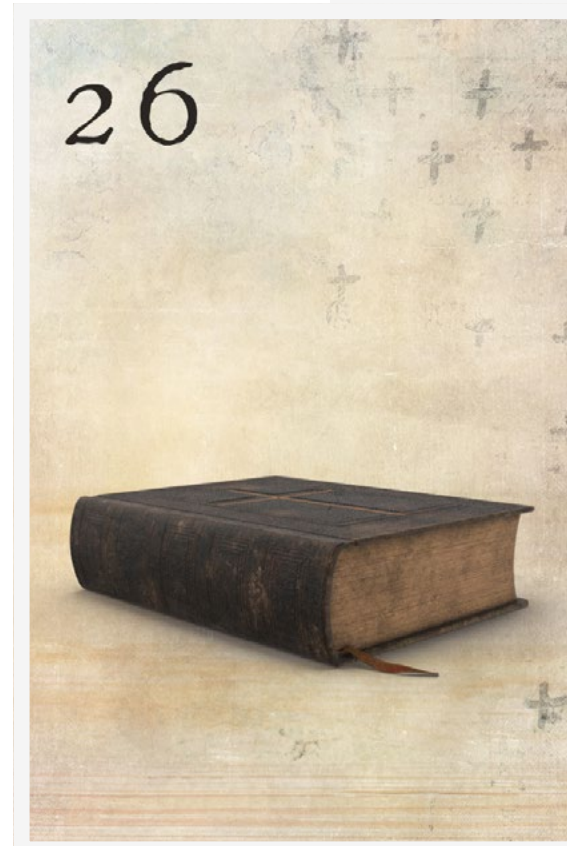
Secrets and knowledge

The book is primarily a product of culture or an achievement of human cultural development. For a long time, books have been used to record, preserve, and disseminate knowledge, events, or ideas.

In earlier times, however, this knowledge was accessible only to certain initiated and educated circles, as the use of a book in this sense required writing skills and the ability to read. Both were not widely available to the general public for a long time. Therefore, the book is associated not only with knowledge and learning but also with secrecy.

KEYWORDS

Secret, unknown, hidden, hiding place, confidential, learned knowledge, library, history, memory, remembrance, insight, expert, culture, education, reading, literature, author, conservation, casket



THE LETTER

27

Communication and information

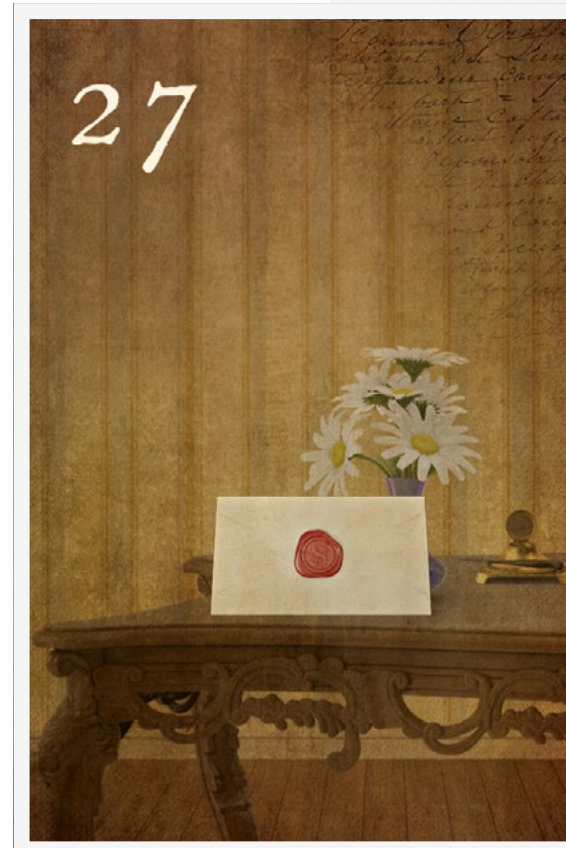
The letter has long been a symbol of communication for people across all cultures and eras. At its most basic, a letter is a message recorded on paper, usually containing a personal message.

However, in Lenormand, the meaning of this card goes beyond this and represents all forms of communication, whether it be a personal conversation, a phone call, or an email. In Lenormand symbolism, the letter conveys not just any superficial or insignificant information; it is always something personal or at least something of significance to the recipient.

The writing utensils depicted alongside the letter, such as a pen and quill, symbolize the transmission of knowledge and creative power. They indicate that the person who possesses them is capable of recording and transmitting information.

KEYWORDS

Communication, information, message, correspondence, written, news, telephone, conversation, letter, email, document, paper, diagnosis, short term, communicative



THE MAN

28

Male questioner

In Lenormand, cards numbered 28 and 29 hold a special significance. The 'Man' and 'Woman' cards primarily serve as person cards, representing the main person and their partner or significant other. If the querent is a man, he is symbolized by the 'Man' card. If the querent is a woman, then this card represents her partner.

Card 28 embodies masculinity or the masculine principle.

Additionally, it's worth noting that the masculine and feminine principles are philosophical constructs that can apply to both men and women. In this context, for instance, the feminine principle could be applied to a man if the 'Woman' card (29) appears in his reading. This concept acknowledges that masculine and feminine qualities can be present in individuals regardless of their gender.

KEYWORDS

Male questioner or partner of the female questioner, man, masculinity, male principle, activity



THE WOMAN

29

Female questioner

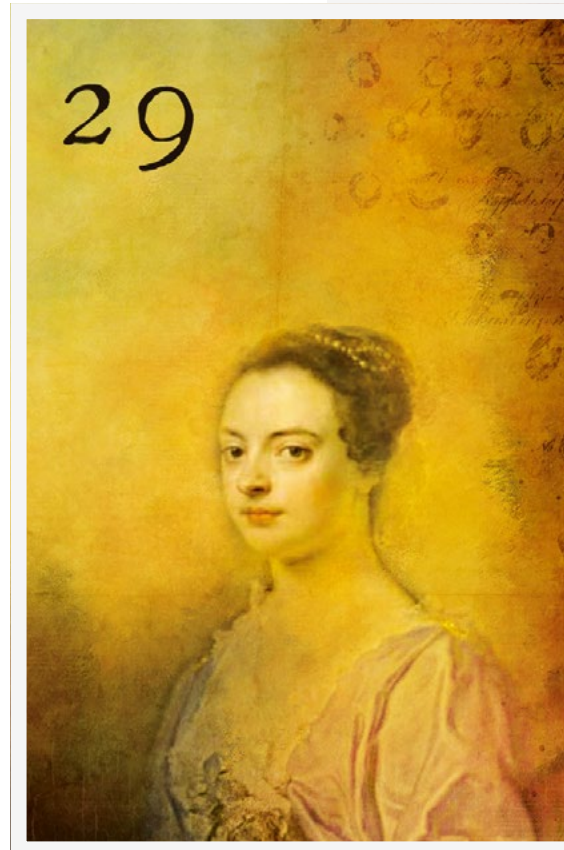
In Lenormand, the cards numbered 28 and 29 hold a distinct significance. The 'Man' and 'Woman' cards are primarily person cards, representing the main person along with their partner or significant other. If the querent is a woman, she is symbolized by the 'Woman' card. If the querent is a man, then this card represents his partner.

Card 29 embodies femininity or the feminine principle.

It is important to note that the masculine and feminine principles are philosophical constructs that can be applicable to both men and women. In this context, for example, the masculine principle could be applied to a woman if the 'Man' card (28) appears in her reading. This recognizes that both masculine and feminine qualities can be present in individuals regardless of their gender.

KEYWORDS

Female questioner or partner of the male questioner, woman, femininity, female principle, passivity



THE LILIES

30

Sexuality and intimacy

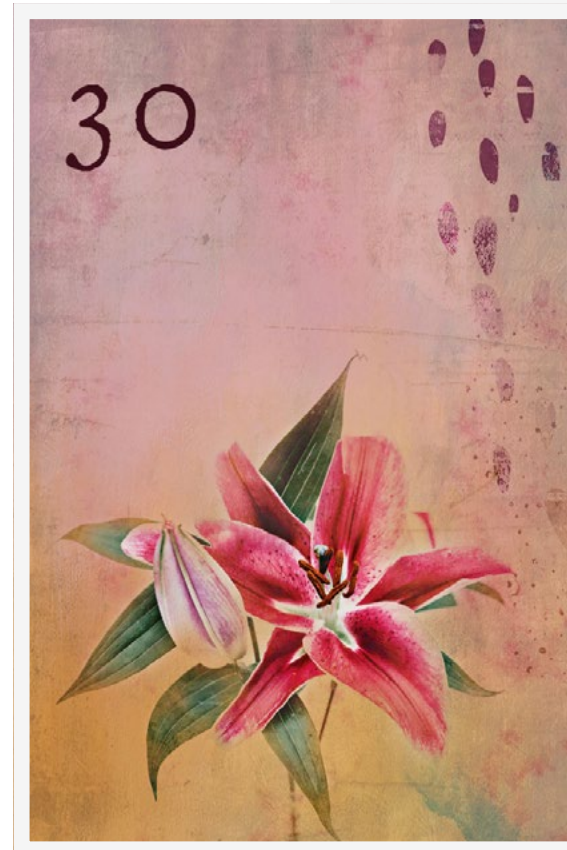
In Greek mythology, the lily is associated with Hera, the guardian of marital sexuality, who was also revered as a goddess of child-birth in many places. According to legend, lilies sprang from a few spilled drops of milk from her breasts when Hercules drank from them.

In Christian symbolism, the white lily plays a prominent role, mainly as a sign of peace, grace, purity, and virginity. On a more secular level, the lily has also been used as a symbol of monarchy and rule, evident in the crests and coats of arms of various noble and ruling houses that still exist today.

In Lenormand, lilies also serve as an action card, indicating who should take the initiative or where action is needed.

KEYWORDS

Sexuality, intimacy, initiative, taking initiative, activity, romance, devotion, sexual pleasure, desire, passion, grace, forgiveness, peace, innocence, purity, monarchy, mercy



THE SUN

31

Greatest joy and fortune

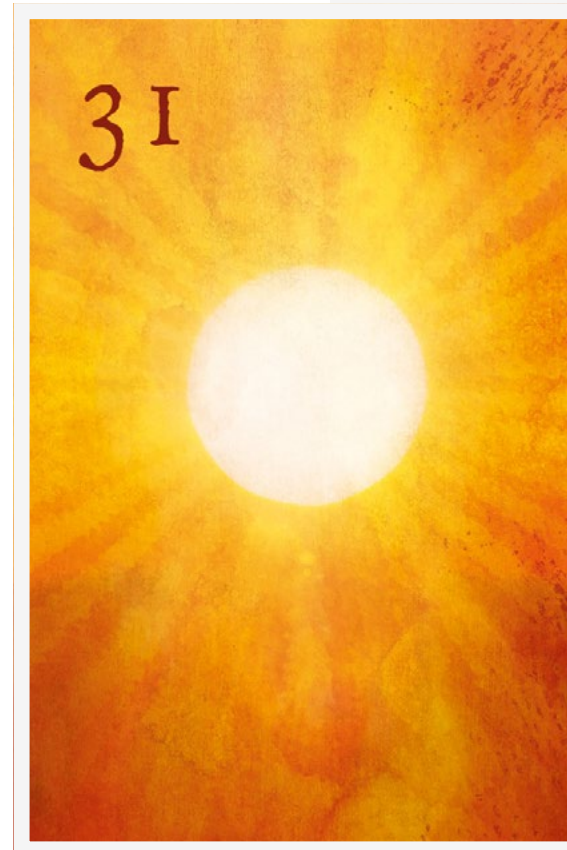
The Sun, upon which all life on Earth depends, has been recognized for its paramount importance since the earliest times. It represents the energetic source of all life, symbolizing energy, light, warmth, and pure joie de vivre. The Sun's light makes things visible, hence it also stands for awareness, alertness, truth, and justice.

The Sun is also a crucial element in many religious beliefs and traditions. In most polytheistic religions, the Sun was worshiped as a deity responsible for growth and prosperity. For instance, in Egyptian mythology, it was revered as the Sun god Ra. In Christian tradition, the Sun is a significant component of many icons and symbolisms. It can be seen as an emblem of grace and divine presence shining down upon the Earth.

Among the Lenormand symbols, the Sun is the most positive of all cards. Those who come into contact with it benefit from its warmth and energy.

KEYWORDS

Greatest joy, fortune, zest for life, happiness, joie de vivre, energy, warmth, heat, fire, confidence, vitality, creative powers, brightness, light, fulfillment, alertness, optimism, summer, dryness, radiation



THE MOON

32

Psyche and inner workings

The Moon primarily symbolizes the psyche and all the internal processes, whether conscious or unconscious. It represents thoughts and feelings, as well as intuitive perceptions or fantasies. It's always about the inner and subjective side of perception.

Additionally, the natural properties of the Moon influence its symbolic meaning. On one hand, it is a symbol of the night, associated with darkness and sleep. On the other hand, it orbits the Earth in regular cycles and influences the Earth's tides and many other natural life processes through its gravitational pull. In this way, it represents everything cyclical.

Moreover, the Moon doesn't have its own light source; it merely reflects the sunlight, making it a symbol of the mirror.

KEYWORDS

Psyche, inner workings, thoughts, introspection, intuition, whims, illusion, fantasy, sensitivity, subjectivity, melancholy, sleep, cold, cycles, rhythm, periodic, mirror, reflection, sentimentality, interior



THE KEY

33

Success and security

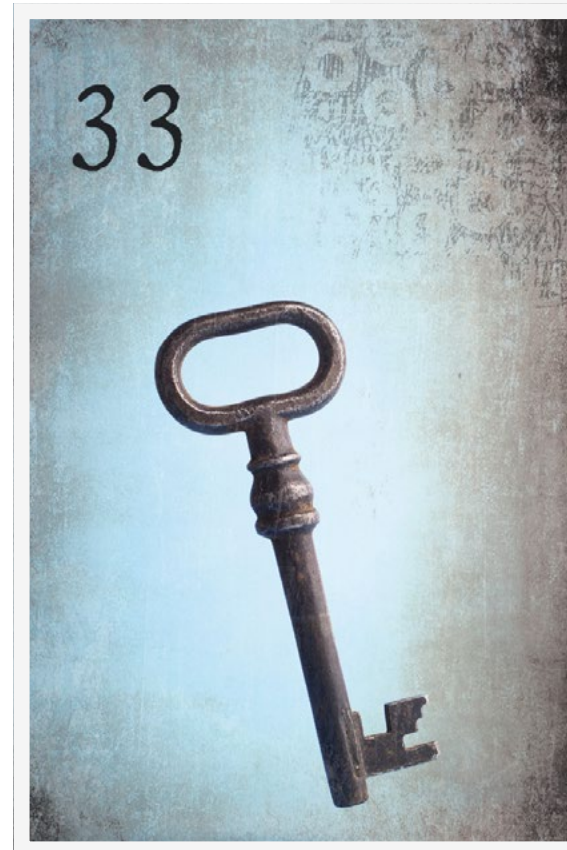
A key, as a tool, is primarily used to unlock locks, a function it has served for thousands of years. Fundamentally, it's about access control, a means to protect something valuable from unauthorized access. This aspect of security has become the most crucial interpretation of this Lenormand symbol.

Another facet of interpretation closely linked to security is success. The key allows one to open doors that remain closed to others, placing its holder in an advantaged position. In this way, it symbolizes success, as well as the intention behind an action.

Moreover, this card can indicate the critical aspect of a matter. It reveals the key aspect of a question or the key to solving a problem.

KEYWORDS

Success, security, certainty, fulfillment, access, conclusion, clue, solution, door opener, key element, reason, objectivity, logic, problem solving, opportunities, career, music, cryptography



THE FISH

34

Finances and feelings

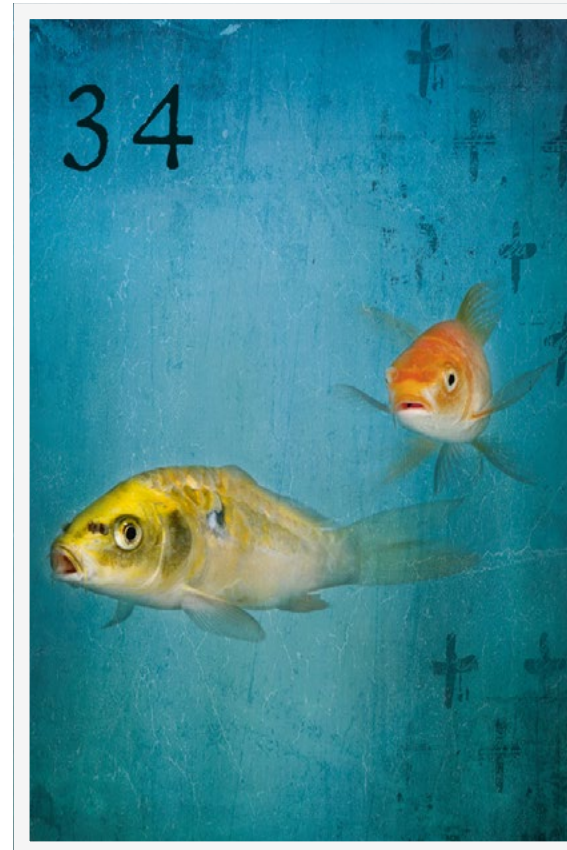
The fish, due to its prolific nature, has gained significance as a symbol of fertility in many cultures and generally represents abundance. In Chinese, the word for “fish” is even a homophone for “wealth.” For many people, fish symbolize wealth and prosperity, a notion that has also been incorporated into the symbolism of Lenormand.

Negatively, fish can represent excess or too much of something, sometimes being associated with excesses. In this sense, the connection to addiction or alcoholism might stem from the idea of drowning in something or losing control over the flow – a state that can correlate with addictive behavior.

In a more straightforward view, fish are simply animals that live in water, so this element also finds its place in the interpretation of this card. As a symbol, water always represents emotions, thus associating the concept of feelings with fish.

KEYWORDS

Finances, money, possession, wealth, investment, payment, feelings, flow, baptism, purification, individuality, discretion, silence, alcohol, addiction, water, aquatic animals, underwater, below the surface



THE ANCHOR

35

Work and profession

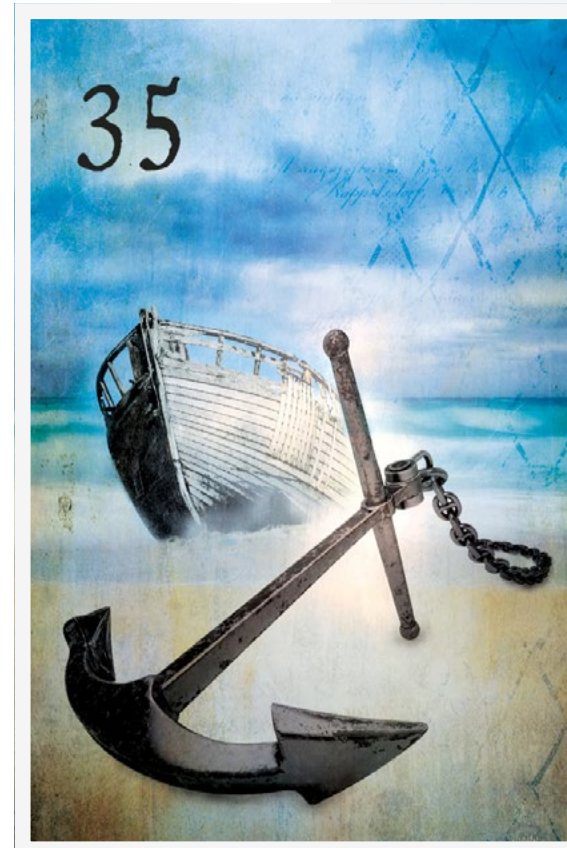
Initially used in navigation, the anchor serves to secure watercraft to the sea floor, rendering them unaffected by wind, currents, or waves. It enables a ship to maintain its position despite external influences.

This function of the anchor primarily contributes to its meaning in Lenormand. Broadly, it's about clinging to people, objects, or ideas and maintaining a stable position. The fact that the anchor keeps the ship safely anchored and protected from drifting on stormy seas makes this symbol also an expression of hope and confidence.

Furthermore, in Lenormand, the anchor is a signifier for work and profession, as these are essential aspects of life that provide individuals with stability and security.

KEYWORDS

Work, profession, occupation, job, assignment, manifestation, support, dependence, fixation, anchoring, hold on to, cling to, hold, comfort zone, stability, hope, hobby, culture, gain a foothold, commit, bent, cramp



THE CROSS

36

Fate and faith

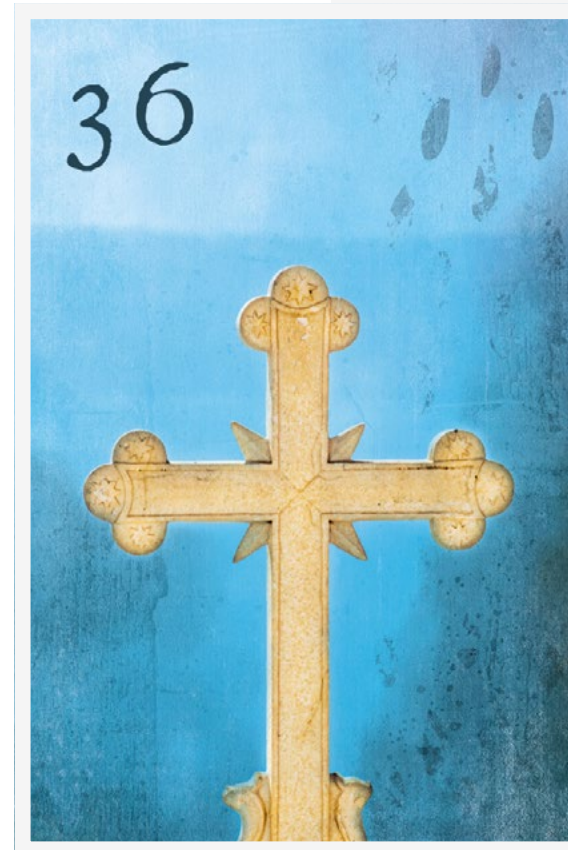
The cross, a symbol with a profound religious significance worldwide, is not exclusive to Christianity. Its ritualistic use dates back to the Stone Age, and pre-Christian religions employed the cross as an expression of their faith in a higher power.

In Lenormand, the cross primarily represents faith and religion. Closely tied to this religious interpretation is the concept of fate. Belief in a higher power often encompasses the conviction that human destiny is guided or at least influenced by this power. The Cross card encompasses the notion of a certain predestination of events.

The fact that the cross often contains a fateful element makes it an ultimate amplifier. Any card that comes into contact with the Cross gains greater significance in its meaning.

KEYWORDS

Fate, destiny, faith, life task, karma, world view, religion, burden, sacrifice, plus, synthesis, reinforcement, amplification, union of opposites, middle, averaging, in addition, adding something



The MONDNACHT

LENORMAND

card deck is

available for purchase

at Etsy:

[kartenorakel.etsy.com](https://www.etsy.com/shop/kartenorakel)

Mondnacht Lenormand

Author: Patrick Scheller

Publisher: Patrick Scheller, Brüder-Busch-Str. 53, 53721 Siegburg,
Germany, www.kartenorakel.com, info@kartenorakel.com

eBook Version: 1.1

Copyright © 2023 Patrick Scheller

All rights reserved. Reproduction, in whole or in part, only with the
written permission of the author.

Deck of cards depicted: Mondnacht Lenormand

Illustration: Patrick Scheller

You can find more information about the Mondnacht Lenormand
on the website at:

<https://lenormand.cards>

And on the author's blog:

<https://kartenorakel.com>

The information in this eBook is for entertainment purposes only
and is not a substitute for medical, legal or other professional ad-
vice. Any liability of the author or the publisher is excluded.

